

Appendix 1

Case study

Linnea Ringqvist
Chalmers University of Technology
Department of Architecture and Civil Engineering

Examiner: Ola Nylander
Supervisor: Hilda Esping Nordblom

Scarwafa Cohousing



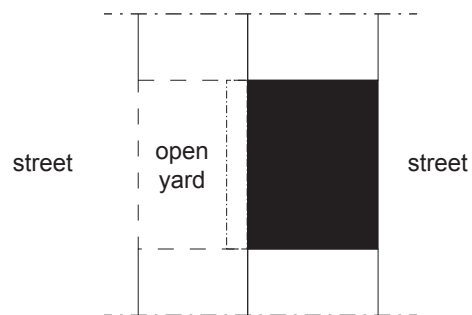
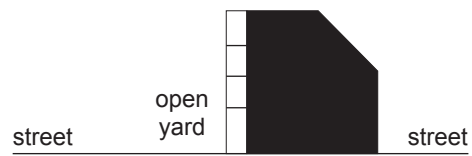
Figure 1. [Scarwafa Cohousing] (van der Kooy, n.d.)
Townhouse structure with somewhat individual expression and the external "superframe"

General information

Location: Amsterdam, Netherlands
Year: 2016
Architects: Krft

Units: 3
Size: 647m²
Shared area: Outdoor

ILLUSTRATION (no scale)



SCHEMATIC ARRANGEMENT (no scale)

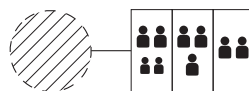
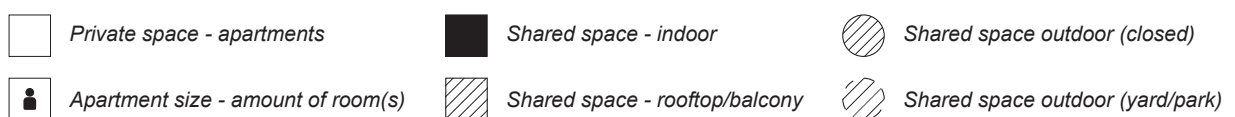


ILLUSTRATION (above)



SCHEMATIC ARRANGEMENT



Urbana Villor



Figure 4. [Urbana Villor] (oskarnorelius.blogspot, n.d.)

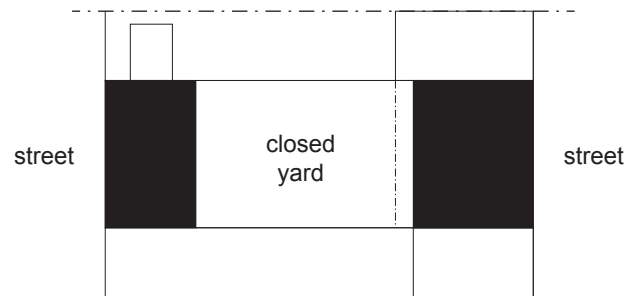
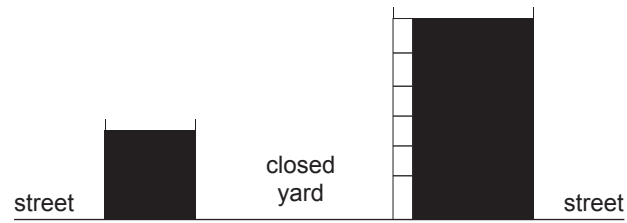
The balconies towards the yard with a 30 cm thick layer of soil works as gardening allotments and rainwater storage

General information

Location: Malmö, Sweden
Year: 2008
Architects: Cord Siegel & Pontus Åqvist

Units: 7
Size: 1200m²
Shared area: Outdoor/Indoor
(only storage/greenhouse)

ILLUSTRATION (no scale)



SCHEMATIC ARRANGEMENT (no scale)

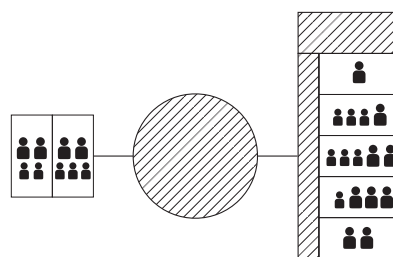
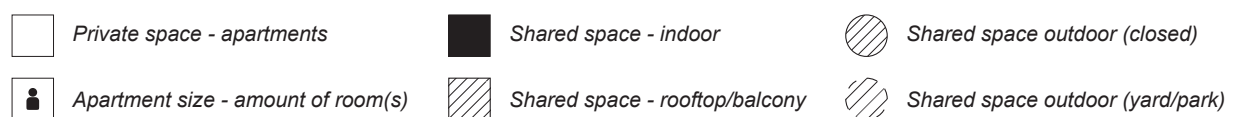


ILLUSTRATION (above)



SCHEMATIC ARRANGEMENT



Byfællesskabet



Figure 3. [Byfællesskabet] (Byfællesskabet, n.d.)

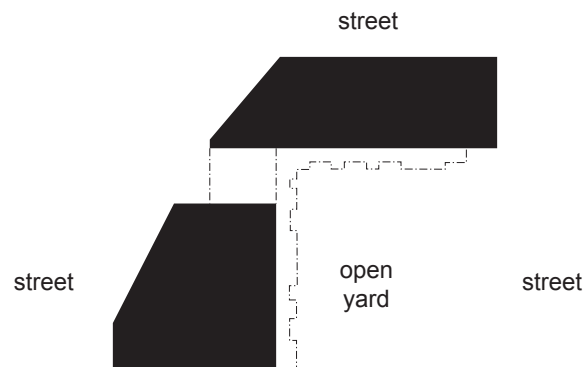
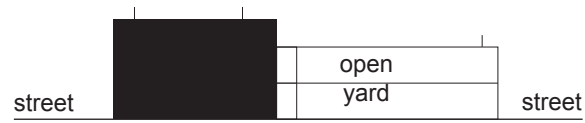
The access balconies towards the yard and the rooftop creates generous spaces for neighbours to meet

General information

Location: Odense, Denmark
Year: 2018
Architects: Praksis arkitekter

Units: 9
Size: 1290m²
Shared area: Outdoor/Indoor
(12,5 m²/apartment = 112m²)

ILLUSTRATION (no scale)



SCHEMATIC ARRANGEMENT (no scale)

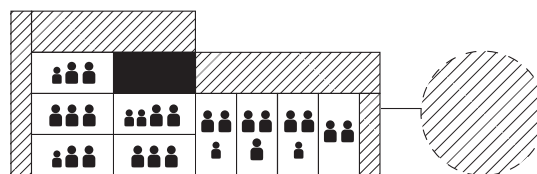
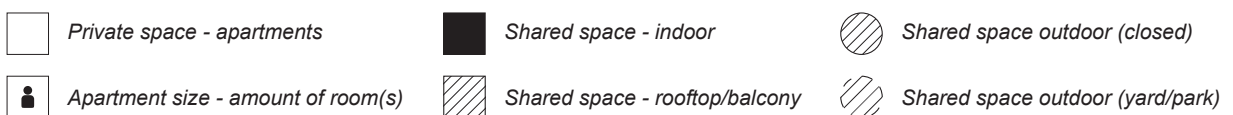


ILLUSTRATION (above)



SCHEMATIC ARRANGEMENT



Nanterre Cohousing



Figure 4. [Nanterre Cohousing] (Schelstraete, n.d.)

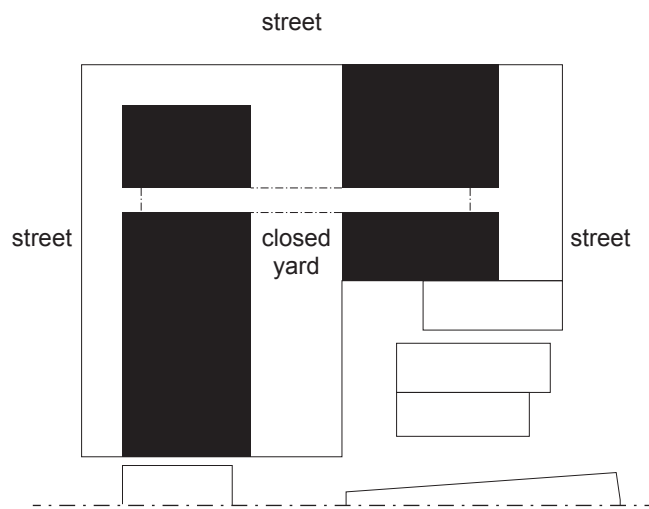
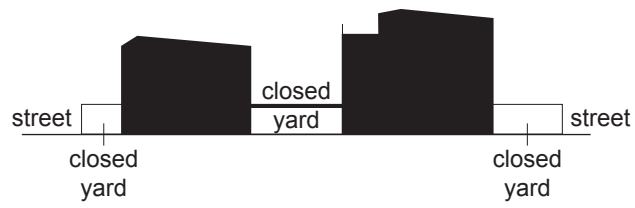
The access balconies and footbridge connects the two volumes and works as a space for neighbours to meet

General information

Location: Nanterre, France
Year: 2015
Architects: MaO architectes, Tectône

Units: 15
Size: 1620m²
Shared area: Outdoor/Indoor (60 m²)

ILLUSTRATION (no scale)



SCHEMATIC ARRANGEMENT (no scale)

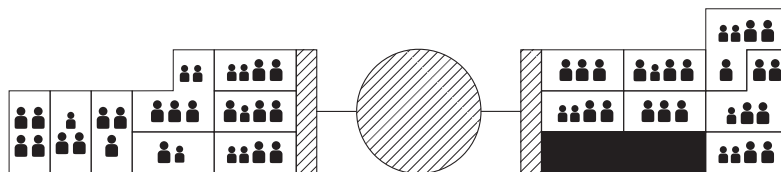
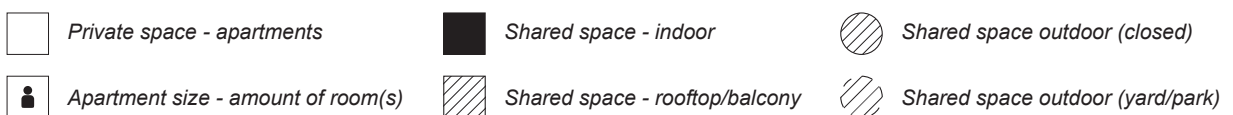


ILLUSTRATION (above)



SCHEMATIC ARRANGEMENT



R50-Cohousing



Figure 7. [R50-Cohousing] (Alberts, n.d.)

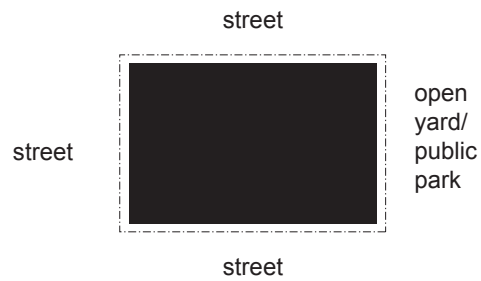
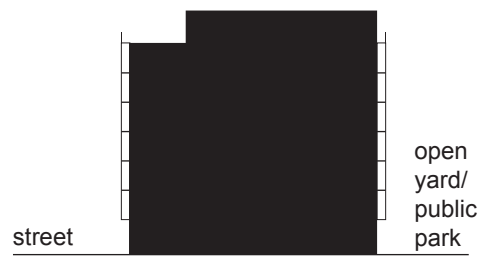
The all-around balconies connect both the neighbours and all the rooms within each apartment

General information

Location: Berlin, Germany
Year: 2013
Architects: Heide & von Beckerath,
ifau und Jesko Fezer

Units: 19
Size: 2037m²
Shared area: Outdoor/Indoor (100 m²)

ILLUSTRATION (no scale)



SCHEMATIC ARRANGEMENT (no scale)

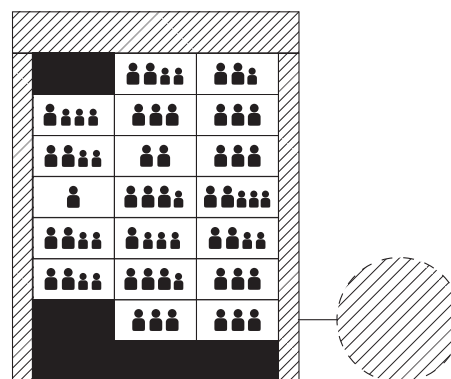
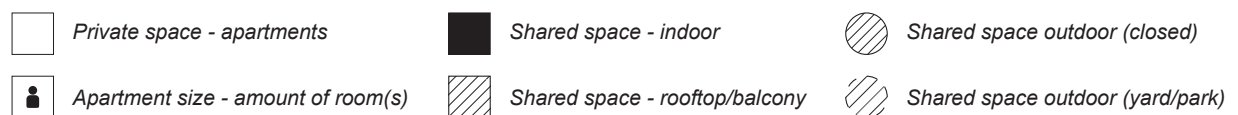


ILLUSTRATION (above)



SCHEMATIC ARRANGEMENT



Sofielunds Kollektivhus



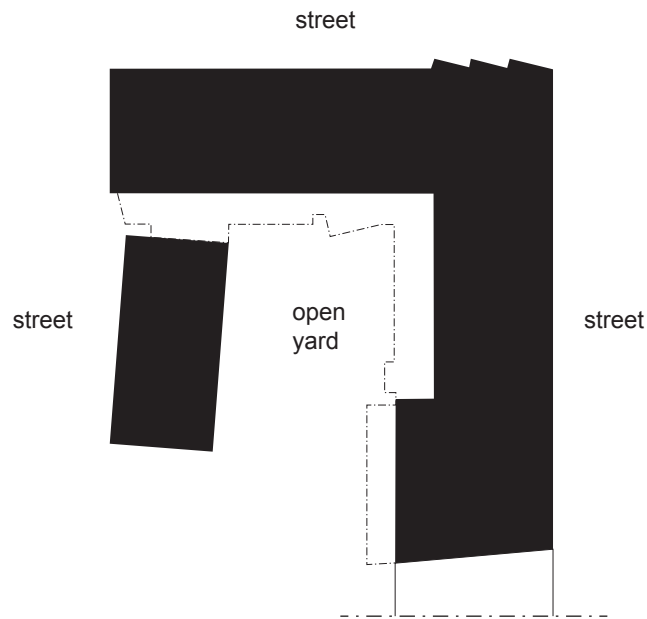
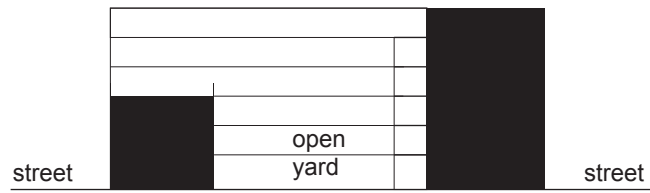
Figure 8. [Sofielunds Kollektivhus] (Lukac, n.d.)
The facade towards the yard with access balconies and shared outdoor space

General information

Location: Malmö, Sweden
Year: 2014
Architects: Kanozi Arkitekter

Units: 45
Size: No information
Shared area: Outdoor/Indoor (300 m²)

ILLUSTRATION (no scale)



SCHEMATIC ARRANGEMENT (no scale)

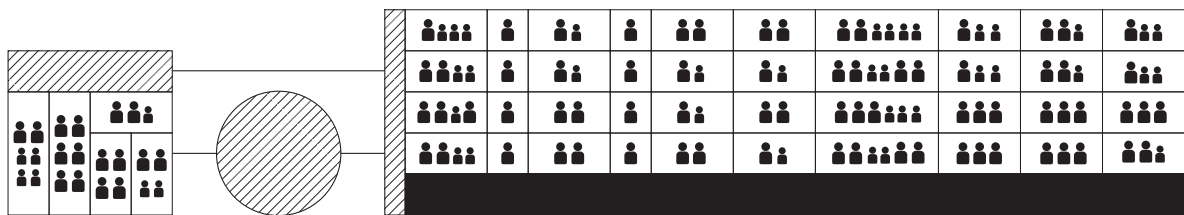
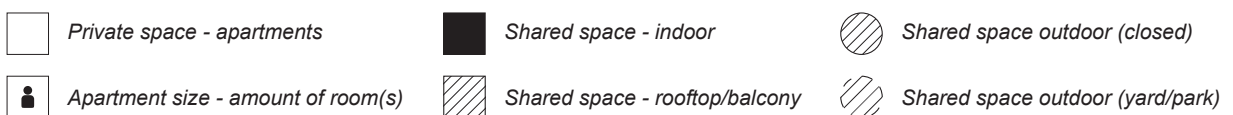


ILLUSTRATION (above)



SCHEMATIC ARRANGEMENT



SUMMARY CASE STUDY

Information

	Scarwafa Cohousing	Urbana Villor	Byfællesskabet	Nanterre Cohousing	R50-Cohousing	Sofielunds Kollektivhus
Units	3	7	9	15	19	45
Size	647m ²	1200m ²	1290m ²	1620m ²	2037m ²	No information
Shared area	Outdoor	Outdoor/Indoor	Outdoor/Indoor 112m ²	Outdoor/Indoor 60m ²	Outdoor/Indoor 100m ²	Outdoor/Indoor 300m ²
Residents/ target group	Mixed age	Mixed age	Mixed age	Mixed age	Mixed age	Mixed age
Year	2016	2008	2018	2015	2013	2014
Location	Amsterdam, Netherlands	Malmö, Sweden	Odense, Denmark	Nanterre, France	Berlin, Germany	Malmö, Sweden
Distance from central station	~ 3km	~ 3km	~ 2km	~ 0,5km	~ 3,5km	~ 3km
Architect(s)	Krft	Cord Siegel & Pontus Åqvist	Praksis arkitekter	MaO architectes, Tectône	Heide & von Beckerath, ifau und Jesko Fezer	Kanozi Arkitekter
Building identity	Townhouse structure where each facade has an individual expression and an additional, common, "superframe"	So-called <i>villa qualities</i> with big balconies on each floor and an external common staircase for neighbours to meet	Access balconies towards the yard, with big space for neighbours to meet. A more closed facade towards the street	Access balconies and footbridge for neighbours to meet. The footbridge connects the two volumes	All-around balconies connect both the neighbours and all the rooms within each apartment	Access balconies towards the yard for neighbours to meet. A more closed facade towards the street

Apartments

	Scarwafa Cohousing	Urbana Villor	Byfællesskabet	Nanterre Cohousing	R50-Cohousing	Sofielunds Kollektivhus
Ownership	Private owning	Private owning	Private owning	Private owning	Private owning	Cooperative renting
Apartment Sizes	3-5 rok	1-5 rok (90-141 m ²)	2-4 rok (75-120 m ²)	3-5 rok		1-6 rok (36-131 m ²)
Reduced size or function	None	No indoor staircase	Overall apartment size	No information	No information	Overall apartment size ~ 10% reduced
Apartment shape and location	Narrow shape with light from two directions. Duplex apartments in 3 levels	Squared shape with light from two directions.	Various shapes with light from two or three directions. Mix of one level and duplex apartments	Various shapes with light from two or three directions. Mix of one level and duplex apartments	Three apartments on each floor, with light from two or three directions.	Various shapes with light from two or three directions.
Relation to community	Through front yard	Outdoor staircase as link between apartments	Entrancé from common balcony	Entrancé from common balcony	All round balcony as link between apartments	Entrancé from common balcony
Private outdoor space	Balcony (all units)	Balcony (all units) With integrated plant boxes	Balcony (access balconies with more or less private space) With integrated plant boxes	Balcony (some units)	Balcony (all units) Accessible from all rooms, open towards neighbours)	Balcony (semiprivate access balconies)
Individual adaptations	Individually tailored apartments	Individually tailored apartments	Individually tailored apartments	Participatory process and somewhat individually tailored apartments sizes	Individually tailored apartments	Participatory process and somewhat individually tailored apartments sizes

SUMMARY CASE STUDY

Building community

	Scarwafa Cohousing	Urbana Villor	Byfællesskabet	Nanterre Cohousing	R50-Cohousing	Sofielunds Kollektivhus
Shared spaces (indoor) (social)	None	Greenhouse	Multipurpose room Party room Workshops	Multipurpose room Kitchen DIY workshop	Community space (multipurpose room/ meeting room which can be used by the school and others in the area) Store Atelier Business premises Workshop Winter garden	Kitchen Dining room Living room Children's play room Teenage room Exercise room Gym Library Music room Movie room Dance/yoga room Sauna w showers Workshop Ateliér Office Winter garden
Shared spaces (outdoor)	Front Yard	Rooftop terrace Yard	Rooftop terrace Yard	Landings Common terrace Vegetable Garden Yard	Rooftop terrace (with summer kitchen) Vegetable Garden	Landings Rooftop terrace Yard Vegetable Garden
Shared resources/ facilities	None	Bike storage Storage	Drying room Guest apartment Storage	Bike Storage Laundry Storage	Guest apartment Laundry	Guest apartment Loom room Storage (shared stuff) Laundry Toilets
Community activities	No information	No information	Dining 1-3 times/ week	No information	No information	Dining 3 times/week

Sustainability

	Scarwafa Cohousing	Urbana Villor	Byfællesskabet	Nanterre Cohousing	R50-Cohousing	Sofielunds Kollektivhus
Social focus	Joint building venture/ Participatory process Shared outdoor space for social interaction	Joint building venture/ Participatory process Urban gardening and shared outdoor space for social interaction	Joint building venture/ Participatory process Common activities Urban gardening and shared outdoor space for social interaction	Social housing/ Participatory process Shared outdoor space for social interaction	Joint building venture/ Participatory process Urban gardening, shared outdoor space and non commercial spaces for social interaction with each other and existing neighbourhood	Participatory process Teambuilding and common activities Urban gardening and shared outdoor space for social interaction
Ecological focus	Facade system with balconies for shading and greenery (named superframe)	Lifecycle perspective, selective and non-toxic materials Urban gardening and compost of organic waste Energy-efficient means of transport are encouraged (bicycles)	Green roof (sedum) Urban gardening Energy-efficient means of transport are encouraged (bicycles)	Improve building performance with natural ventilation	Energy consumption 30% lower than conventional properties Urban gardening	Focus on ecological/ biological cycle and reduced energy consumption Green roof (sedum) and solar panels "Green" procurement and life cycle analysis Urban gardening and greenery
Economical focus	Reduced construction cost through joint building venture (compared to single households)	Reduced cost through minimized internal communication areas Long-term investment	Reduced cost through joint building venture (compared to regular market price)	Social housing (Offering homes for first time buyers by providing land at reduced cost)	Affordable housing (Reduce construction cost with raw space)	Invest in long-term choices & solutions Shared spaces and housework reduces recurring expenses

List of References

- Allabrf.se (2021). *BRF Urbana Villor Malmö*. Retrieved from <https://www.allabrf.se/vimpelgatan-9> (2021-01-18)
- ArchDaily. (2015). *Nanterre Co-Housing / MaO architectes + Tectône*. Retrieved from <https://www.archdaily.com/779035/nanterre-co-housing-mao-architectes-plus-tectone>
- ArchDaily (2015). *R50 – Cohousing / ifau und Jesko Fezer + Heide & von Beckerath*. Retrieved from <https://www.archdaily.com/593154/r50-nil-cohousing-ifau-und-jesko-fezer-heide-and-von-beckerath> (2021-01-18)
- ArchDaily. (2020). *Scarwafa Co-Housing / Krft*. Retrieved from <https://www.archdaily.com/914900/scarwafa-co-housing-krft> (2021-01-18)
- Bofællesskab.dk (2021). *Oplysninger om bofællesskabet*. Retrieved from <https://bofaellesskab.dk/bofaellesskaber/se-bofaellesskaber/byfaellesskabet> (2021-01-18)
- Broms Wessel, O., & Hedström, H. (2016). *Byggemenskaper: handbok om att bygga tillsammans*. Arkitektur förlag.
- Byfællesskabet (2021). *Byggeriet, processen og tegninger*. Retrieved from <http://byfaellesskabet.dk/Galleri/processen.html> (2021-01-18)
- Byfællesskabet (2021). *Byfællesskabet Thomas B*. Retrieved from <http://byfaellesskabet.dk/index.html> (2021-01-18)
- Cohousing Berlin (2015). *R 50 - Ritterstraße 50*. Retrieved from <https://www.cohousing-berlin.de/en/projects/r-50-ritterstrasse-50> (2021-01-18)
- EU Mies Award (2011). *UrbanaVillor*. Retrieved from <https://miesarch.com/work/1587> (2021-01-18)
- krft. (2017). *Scarwafa Cohousing*. Retrieved from <http://www.krft.nl/project-items/monnikskapstraat> (2021-01-18)
- Hauschild-siegel (2008). *Urbana Villor - SE*. Retrieved from <https://www.hauschild-siegel.com/se-1/uv-se/> (2021-01-18)
- Heide & von Beckerath (2015). *R50 – cohousing*. Retrieved from <https://heidevonbeckerath.com/single/r50-cohousing> (2021-01-18)
- Kanozi Arkitekter (2014). *Kv Trevnaden*. Retrieved from <https://www.kanozi.se/projekt/kvtrevnaden/> (2021-01-18)
- Kollektivhus i Malmö (2014). *Hur KiM skapade SoKo*. Retrieved from <https://kollektivhus.wordpress.com/sofielunds-kollektivhus/> (2021-01-18)
- Mobile architectural office (2015). *15 Logements Participatifs, Nanterre*. Retrieved from http://www.m-a-o.fr/references/Mao_04-NANTERRE.pdf (2021-01-18)
- Open Studio (2009). *UrbanaVillor*. Retrieved from <http://www.openstudio.se/projekt/urbanavillor/index.html> (2021-01-18)
- Praksis (2015). *Boliger, Thomas B. Thriges Gade*. Retrieved from <http://www.praksisarkitekter.dk/boliger-thomas-b-thriges-gade> (2021-01-18)
- Sofielunds kollektivhus (2014). *Om huset*. Retrieved from <http://www.sofielundskollektivhus.se/> (2021-01-18)
- Sollien, S. (2020). *Byggefællesskaber Grundlag for udvikling af en dansk model*. Retrieved from <https://vandkunsten.com/content//2020/06/Vandkunsten-Byggefaellesskaber-Arbejdspapir-spreads.pdf>
- Westholm, H. (2020). *De byggde gemenskap: Erfarenheter från tio bygg- och bogemenskaper i Sverige*. Gothenburg: Chalmers university press.

List of Figures

Figure 1. van der Kooy, C. (n.d.). [Scarwafa Cohousing] [Photograph]. ArchDaily. Retrieved from <https://www.archdaily.com/914900/scarwafa-co-housing-krft> (2020-10-06)
© Christian van der Kooy

Figure 2. [Urbana Villor] [Photograph]. (n.d.). Oskar Norelius examensarbete. Retrieved from <http://oskarnorelius.blogspot.com/2010/09/pontus-aqvist-om-urbana-villor.html> (2021-02-10)

Figure 3. [Byfællesskabet] [Photograph]. (2017). Byfællesskabet. Retrieved from <http://www.byfaellesskabet.dk>
© byfaellesskabet.dk

Figure 4. Schelstraete, A. (n.d.). [Nanterre Cohousing] [Photograph]. ArchDaily. Retrieved from <https://www.archdaily.com/779035/nanterre-co-housing-mao-architectes-plus-tectone>
© Arnaud Schelstraete.

Figure 5. Alberts, A. (n.d.). [R50-Cohousing] [Photograph]. ArchDaily. Retrieved from <https://www.archdaily.com/593154/r50-nil-cohousing-ifau-und-jesko-fezer-heide-and-von-beckerath> (2021-02-02)
© Andrew Alberts

Figure 6. Lukac, B. (n.d.). [Sofielunds Kollektivhus] [Photograph]. Kanozi Arkitekter. Retrieved from <https://www.kanozi.se/projekt/kvtrevnaden/> (2021-02-03)
© Malmö Stadsbyggnadskontor