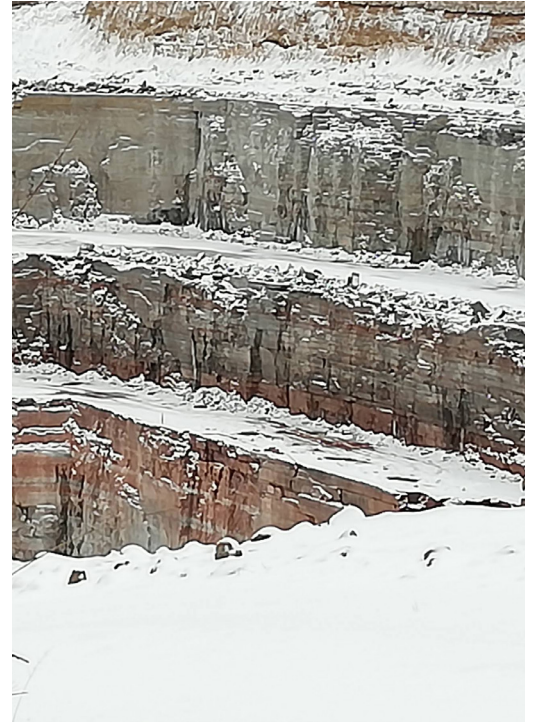
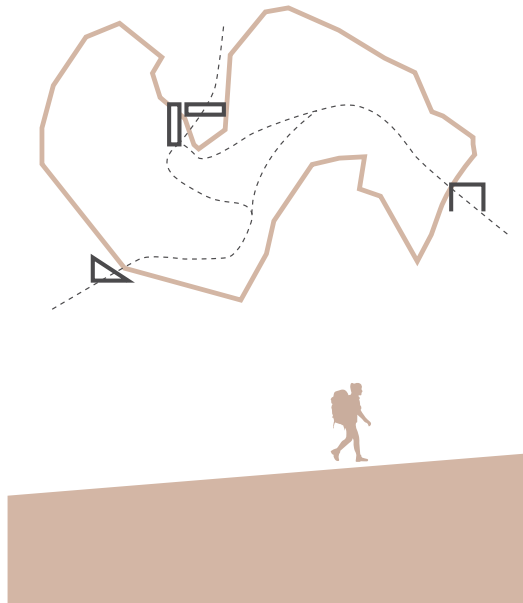


ELSA SJÖBLOM & TYRA WINGREN BERGMAN

## REVIVE

- transformation of an industrial landscape



### RURBAN TRANSFORMATION

Supervisor: Ida Röstlund  
Examiner: Nils Björling  
MT'21

Industrial landscapes are embedded in the structure of our cities. These landscapes can be seen as a result of today's consumption patterns. In a globalizing and transitioning world towards a fossil free future, production flows change and the use of endless resources is likely to decrease. These shifts might affect industrial landscapes such as the limestone quarry and factory of Cementa, situated right at the edge of the city center of Skövde. If the industry stops, the quarry industry will leave an inaccessible, large-scale modified landscape.

This thesis aims to explore how architectural design can transform an industrial landscape into a place for recreational and educational purposes. It will also explore how design can strengthen the mental connection to place and relate to time. This is carried out through a speculative design proposal. It will include a system of architectural installations along a recreational path through the industrial landscape. The installations aim to be a start to open up the area for new use and to work as a pedagogic tool to make the visitor more conscious about the place and time with focus on geology and human activity.

The thesis work has been carried out by an interaction between design and research throughout the process. Our design approach has been to build on the existing qualities of the site. This has together with studies of theories and reference case studies formed the outcome. Different design strategies have been developed in order to form an architecture that enhances the place's qualities and the historical layers. With a speculative transformation of the future use of the industrial landscape, we hope to raise interest about the place. The proposal could add to the discussion of the future use of the area.

Keywords: Cultural heritage, limestone, quarry, site specific, recreation, local materials