

PROJECT BOOKLET
I ARK626 I ARCHITECTURAL TRANSFORMATION
& ENVIRONMENTAL CARE I FALL 2021
CHALMERS ARCHITECTURE MPARC

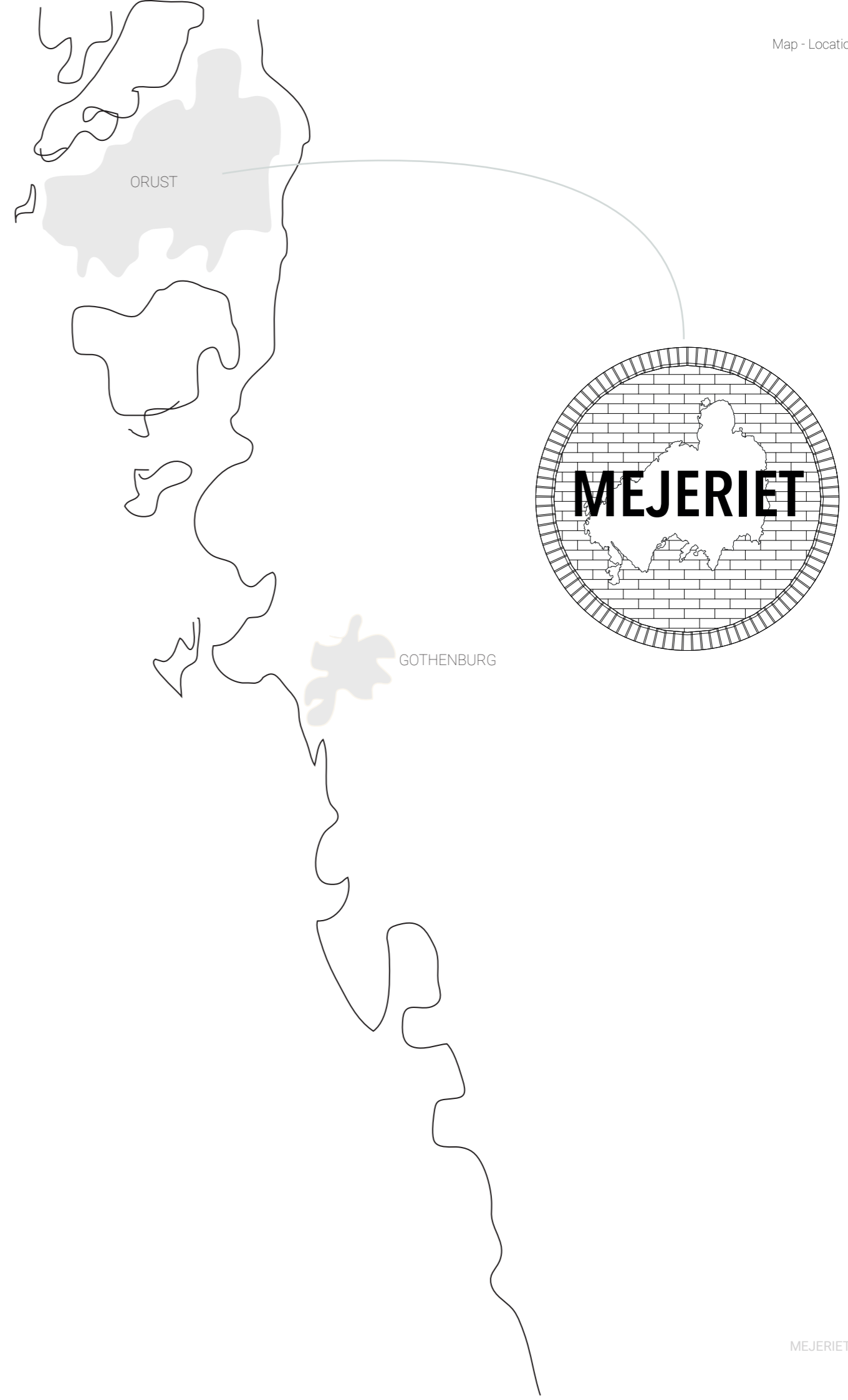
Elke Miedema PhD: Course leader
Oscar Carlsson: Course teacher
Joaquim Tarraso: Examiner
Sven Olof Ahlberg: Specialist tutor

TEAM 2: Andrea Eklund, Ebrahim Rahmani, Alida Schultz

MEJERIET - TEAM 2

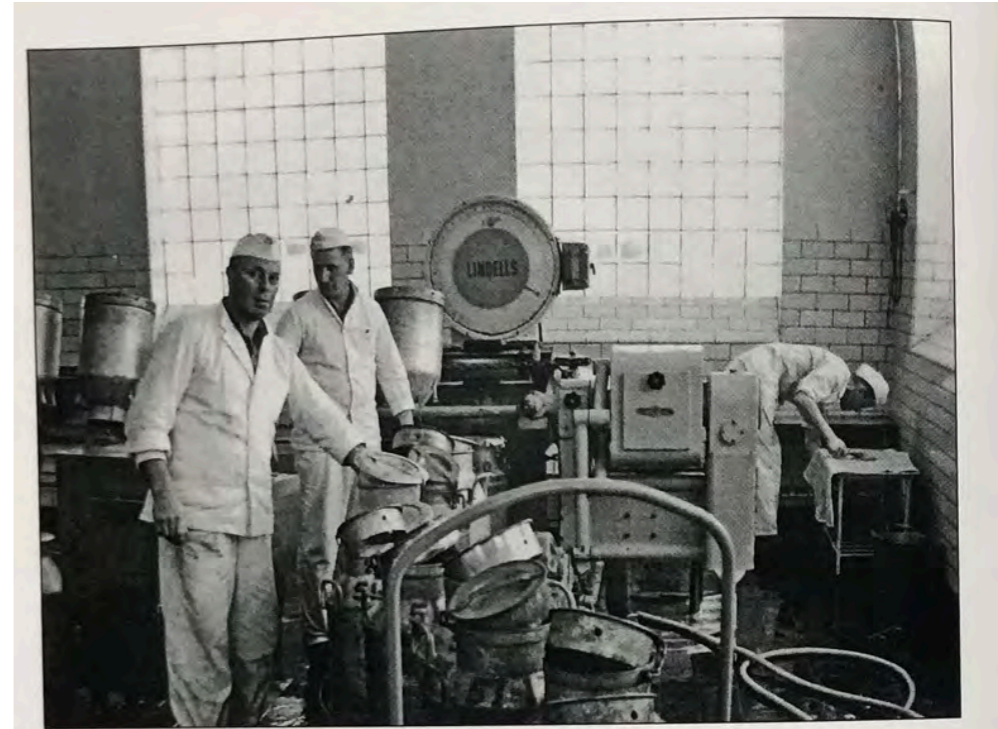
INVENTORY

- » History
- » Site analyse
 - SWOT
 - Orust
 - Sorrounding
- » Building inventory
- » Photos of the site





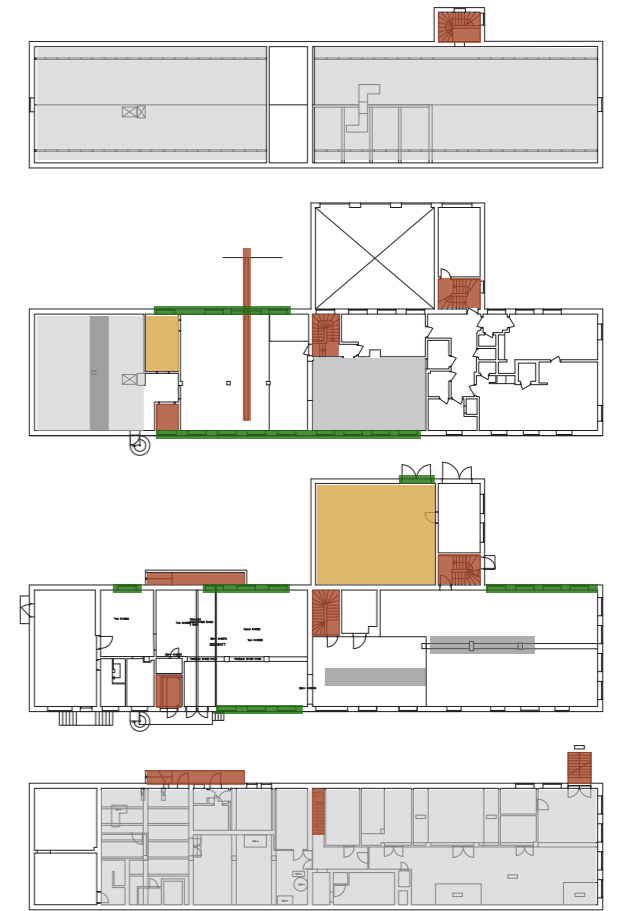
Ombyggnaden klar 1952.



Verksamheten på mejeriet 1961.



Building inventory

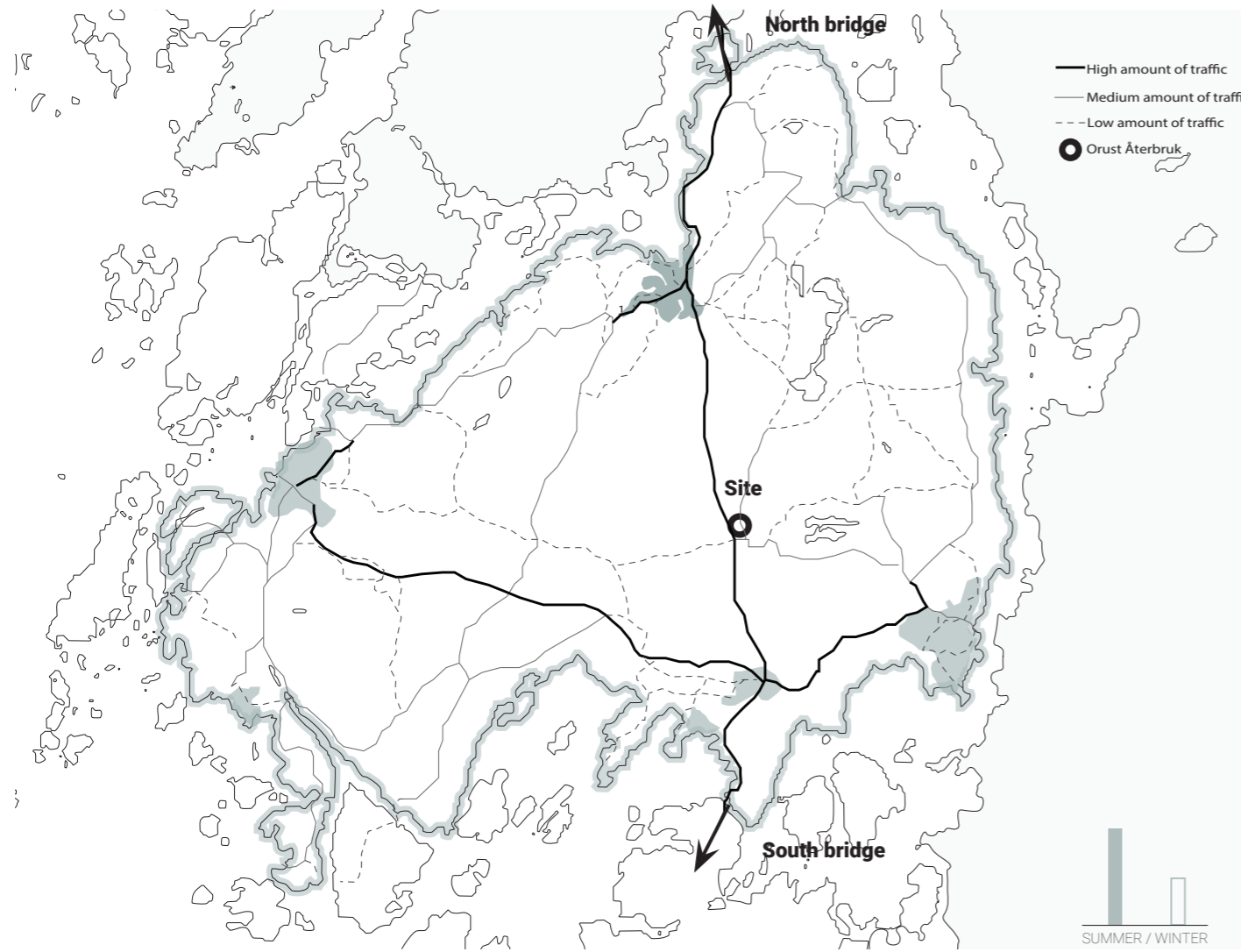


- Vertical communication
- Beautiful windows
- Spatial quality
- Damage
- Extensive cracks

Photos from the site

Plans - Inventory

Site analyse



Location on the island

<p>Strengths</p> <ul style="list-style-type: none"> Location on the island Close to the main road History of production Structure and flexible space Local craftsmanship 	<p>Weaknesses</p> <ul style="list-style-type: none"> Damage Diverse amount of visitors during seasons Car dependency Lack of greenery at the site
<p>Opportunities</p> <ul style="list-style-type: none"> Open floor plan Collaboration with local producers and craftsmanship Increased interest in local produces material and food Attraction 	<p>Threats</p> <ul style="list-style-type: none"> Damaged climate shell Poor condition of structure Damage in south facade

SWOT analyse

"I want the old factory to become a meeting place for people of Orust"

Maggis

"... a place where to buy local food and a vibrant hub for all residents of Orust."

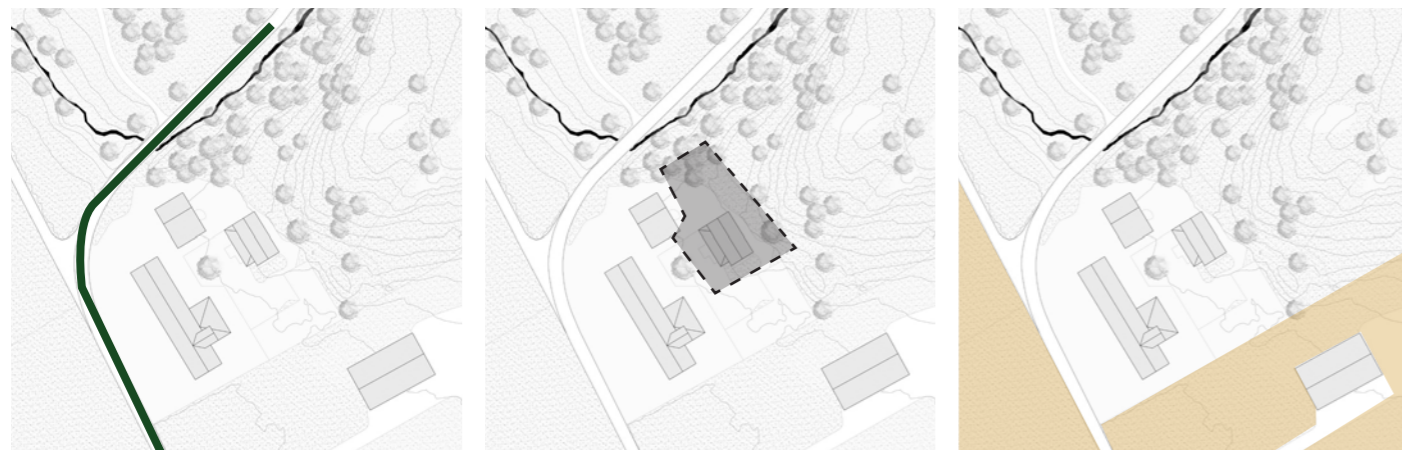
Richard

The location of the old factory is a perfect spot for both residents and visitors"

Peter

Quotes from interviews with residents of Orust

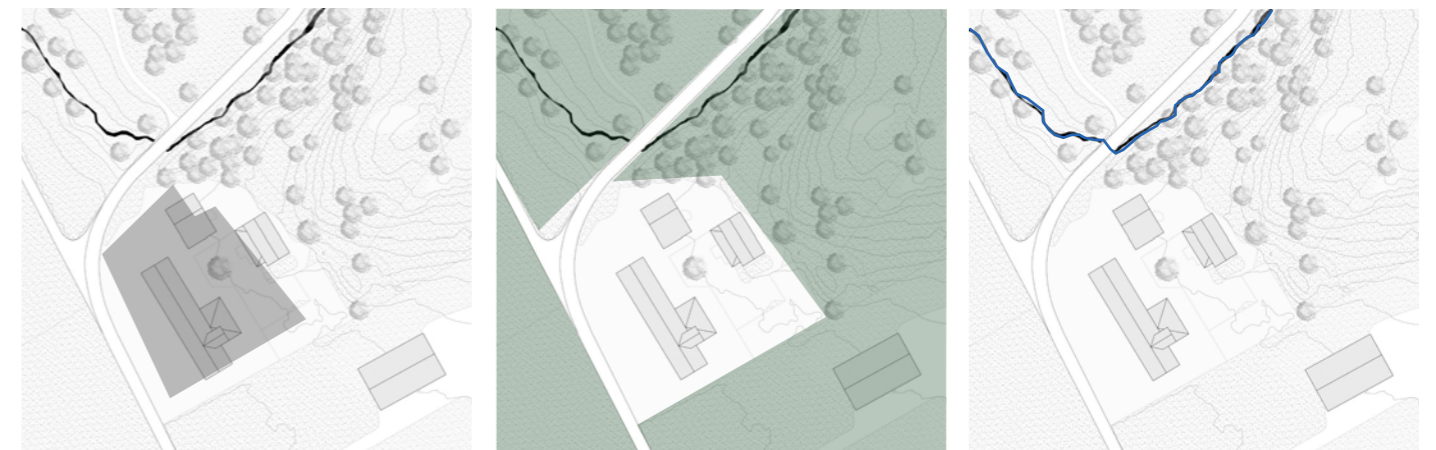
Site inventory



Communication to the main road

Adjacent plot

Active farmland

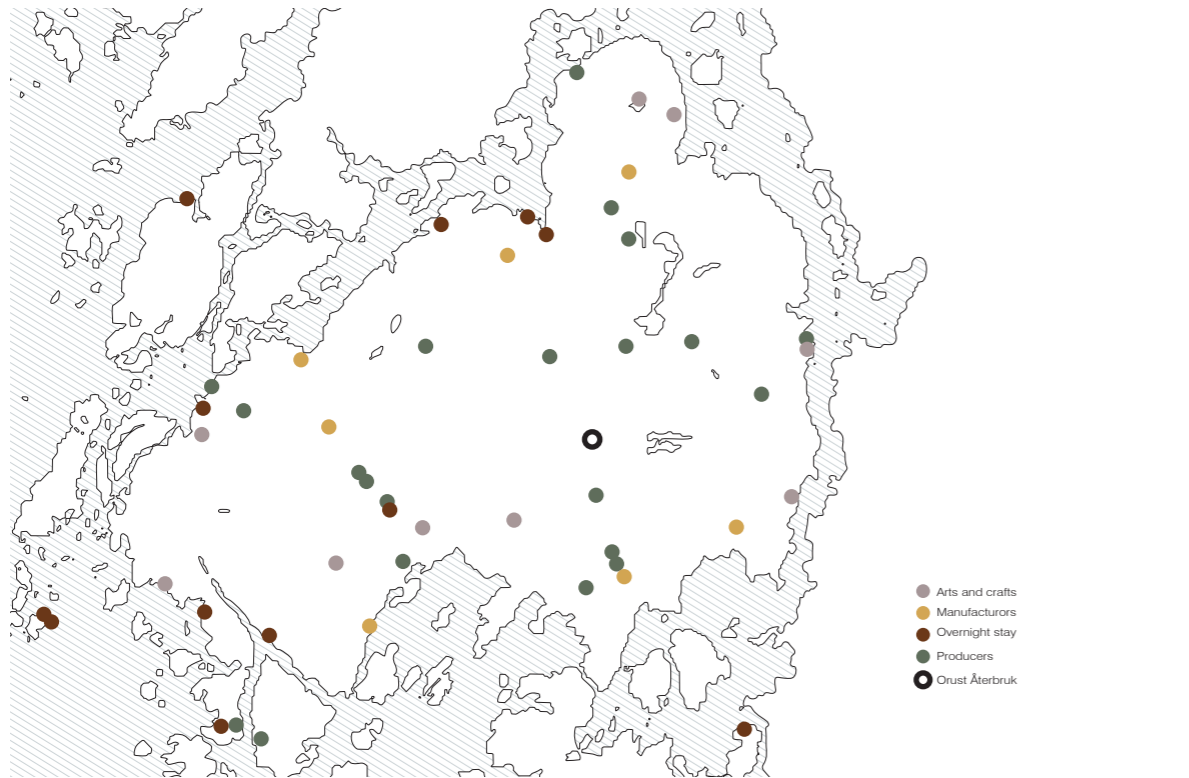


Surface covered with asphalt

Greenery

The creek

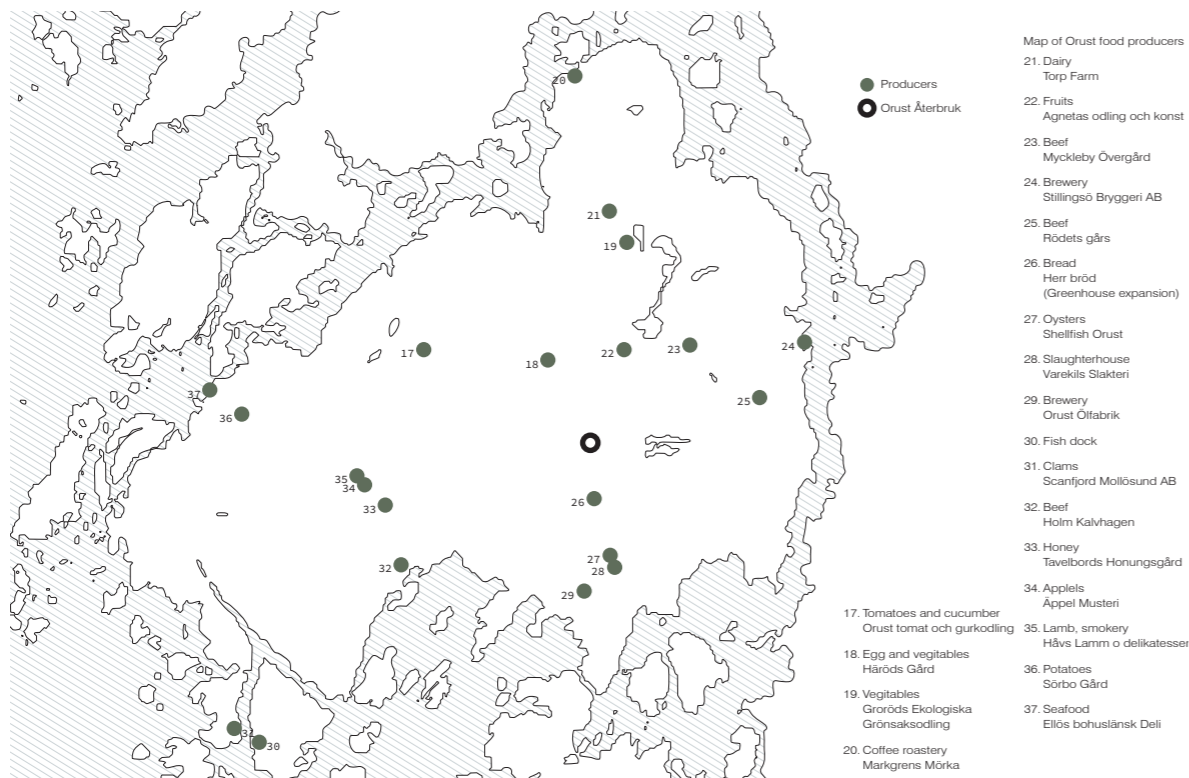
Site analyse
Orust - inventory



Summary - Label

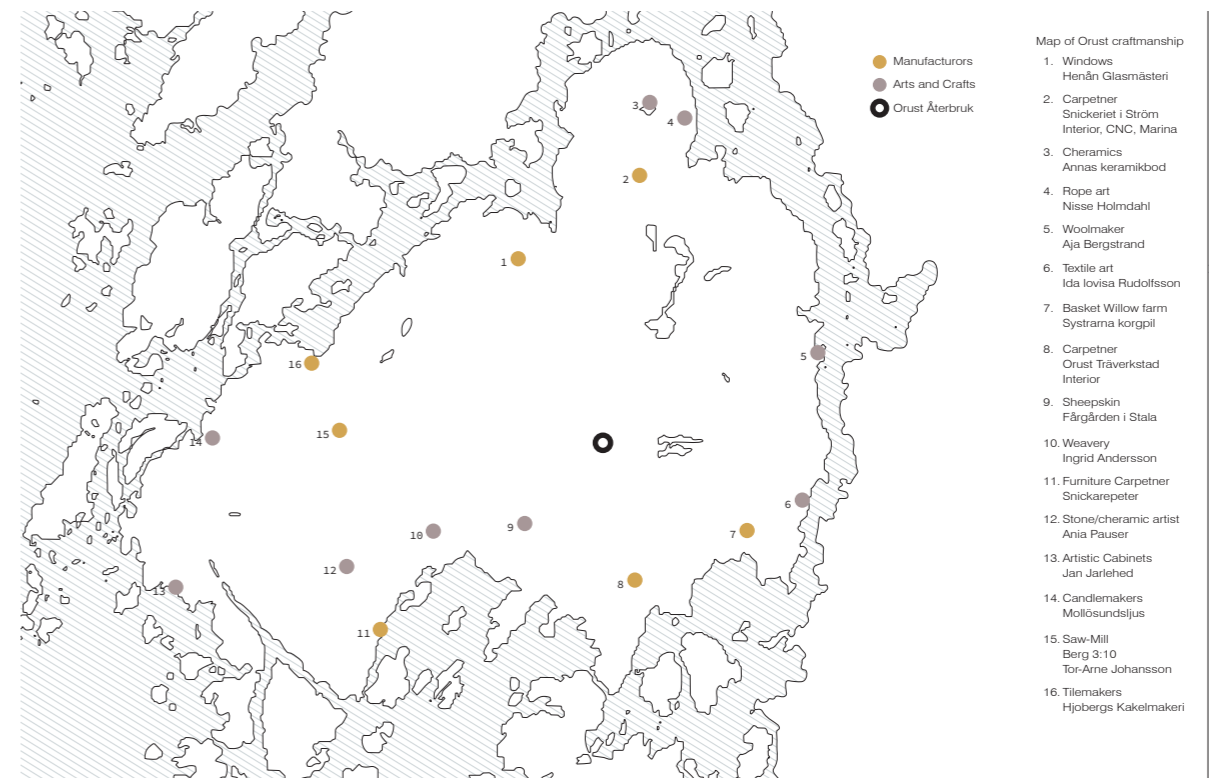


Overnight stay



Producers

- Map of Orust food producers
- 21. Dairy
Torp Farm
 - 22. Fruits
Agnetas odling och konst
 - 23. Beef
Myckleby Övergård
 - 24. Brewery
Stillingö Bryggeri AB
 - 25. Beef
Rödets gårs
 - 26. Bread
Herr bröd
(Greenhouse expansion)
 - 27. Oysters
Shellfish Orust
 - 28. Slaughterhouse
Varekils Slakteri
 - 29. Brewery
Orust Ölfabrik
 - 30. Fish dock
 - 31. Clams
Scanfjord Mollösund AB
 - 32. Beef
Holm Kalvhagen
 - 33. Honey
Tavelbords Honungsgård
 - 34. Apples
Appel Musteri
 - 17. Tomatoes and cucumber
Orust tomat och gurkoding
 - 18. Egg and vegetables
Häröds Gård
 - 19. Vegetables
Gröröds Ekologiska
Grönsaksodling
 - 20. Coffee roastery
Markgrens Mörka

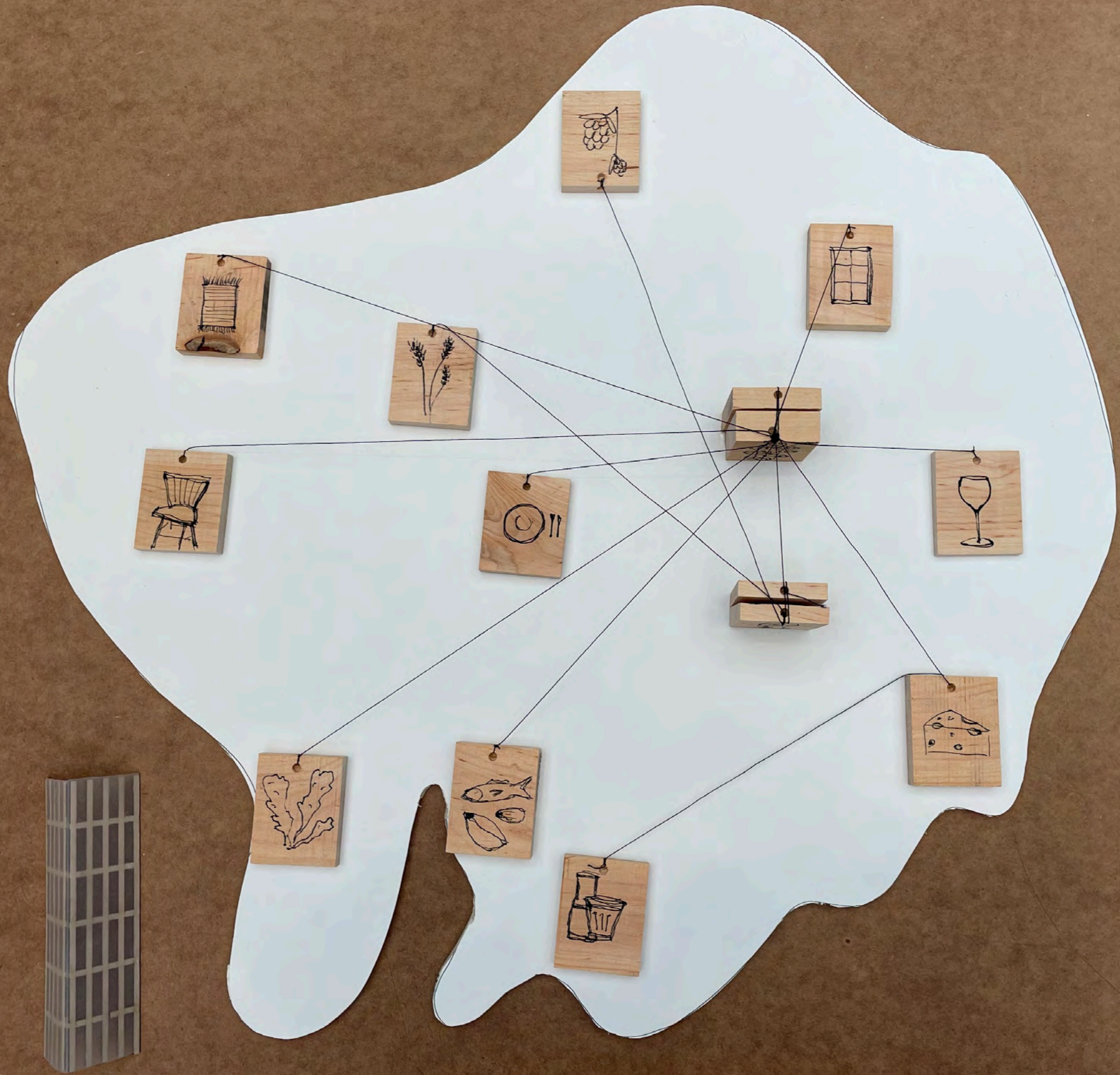


Manufacturers / Arts and Crafts

- Map of Orust craftmanship
1. Windows
Henån Glasmåsteri
 2. Carpetner
Snickeriet i Ström
Interior, CNC, Marina
 3. Ceramics
Annas keramikbod
 4. Rope art
Nisse Holmdahl
 5. Woolmaker
Aja Bergstrand
 6. Textile art
Ida Iovisa Rudolffsson
 7. Basket Willow farm
Systrarna korgpil
 8. Carpetner
Orust Träverkstad
Interior
 9. Sheepskin
Färgården i Stala
 10. Weavery
Ingrid Andersson
 11. Furniture Carpetner
Snickarepetter
 12. Stone/ceramic artist
Ania Pauser
 13. Artistic Cabinets
Jan Jarlehed
 14. Candlesmakers
Mollösundslys
 15. Saw-Mill
Berg 3:10
Tor-Arne Johansson
 16. Tilemakers
Hjobergs Kakelmakeri

CONCEPT

- » Production
- » Consumprion
- » Target group
Personas
Needs
- » Reference project



Personas
Intoduction

- Visitors
- Staff



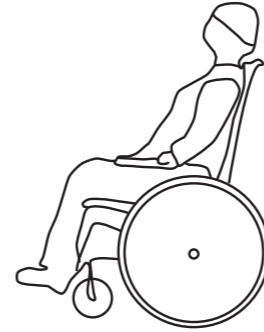
Senior, 60 - 85 y/o
woman
From Orust



Hipster, 40 - 55 y/o man
From Stockholm and
visits Orust together with
his friend



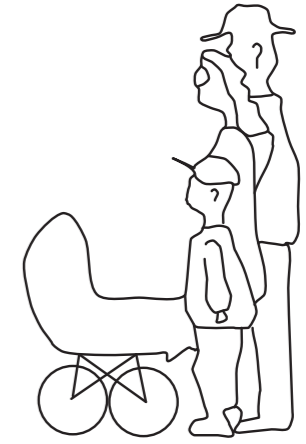
Hipster, 18 - 22 y/o guy
From Orust and working
in Varekil



Pre-retired chef, 40 - 45
y/o
Visiting together with
friends or family.



Hiker, 20 - 30 y/o
Tourist from Portugal



Family
Kids and adults
From Orust



Craftsman, 30 - 60 y/o
From Orust



Producer, 20 - 25 y/o
woman
From Orust
Scanfjord Mollösund



Producer, 30 - 65 y/o
From outside of Europe,
has lived a few years at
Orust



Craftsman, 30 - 60 y/o
woman
From Orust
Orust Återbruk



Beer producer, 30-50 y/o
From Orust
Orust Ölfabrik



Baker, 20-50 y/o
From Orust
Herr Bröd

FINAL PROPOSAL

- » Design strategies
- » Design interventions
- » Scales of locality
- » Site
- » Facades
- » Plans
- » Sections
- » Perspective Exterior
- » Perspective Interior
- » Interior views
- » Colours and tiles
- » Production and consumption





The heritage and transformational strategy used in this project is collectively oriented, but deals with both emotion and knowledge creation.

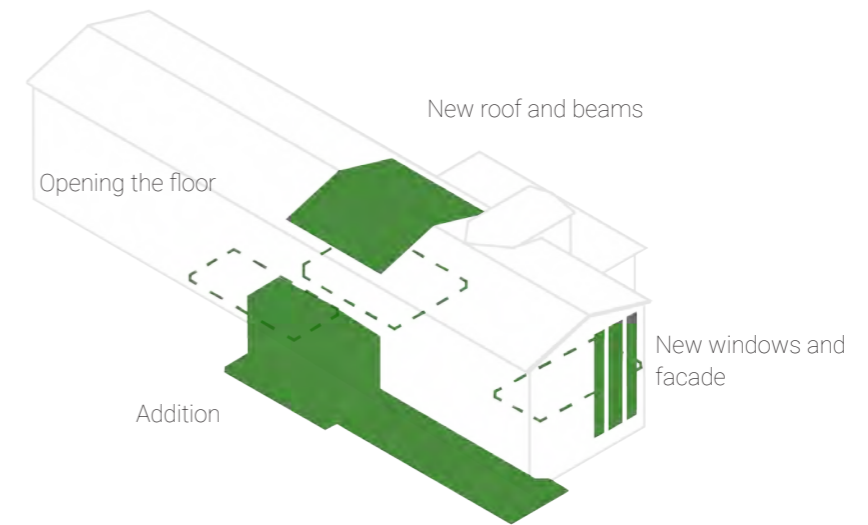
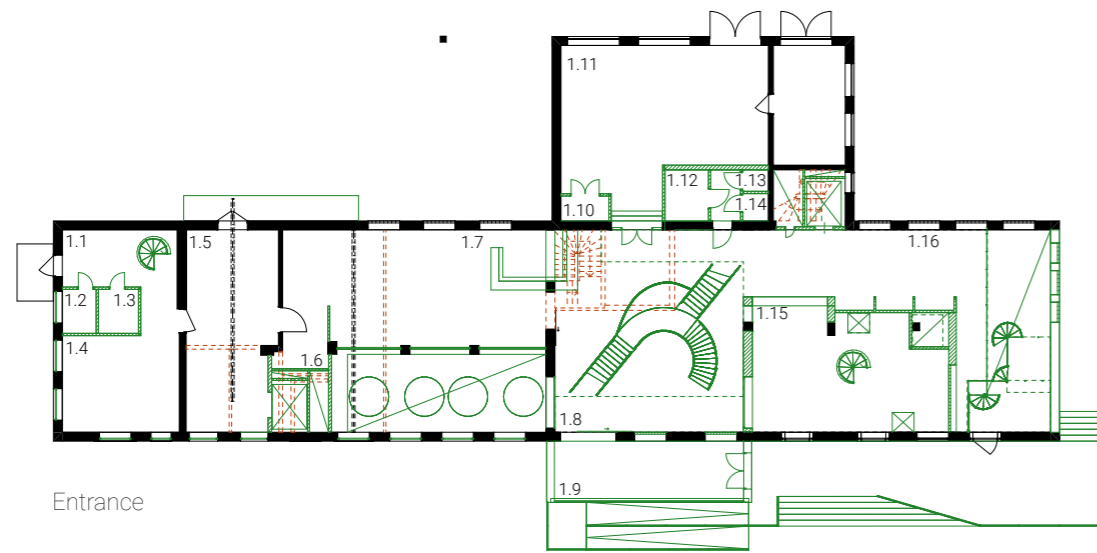
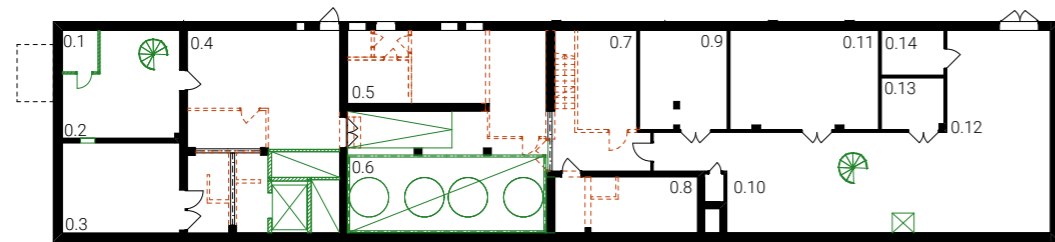


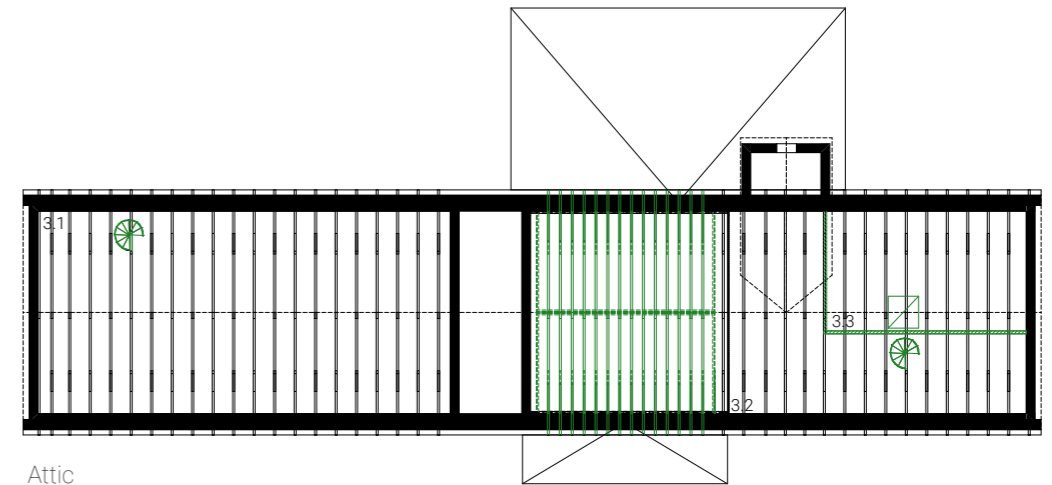
Diagram illustrating four main interventions



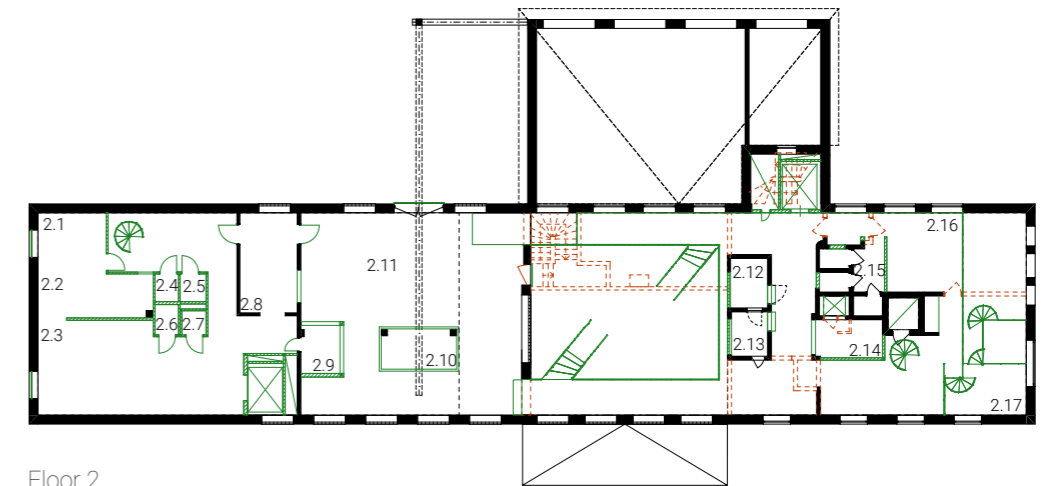
Entrance



Basement



Attic

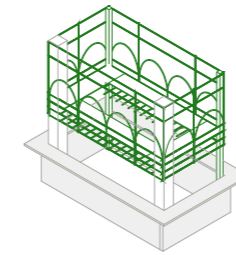
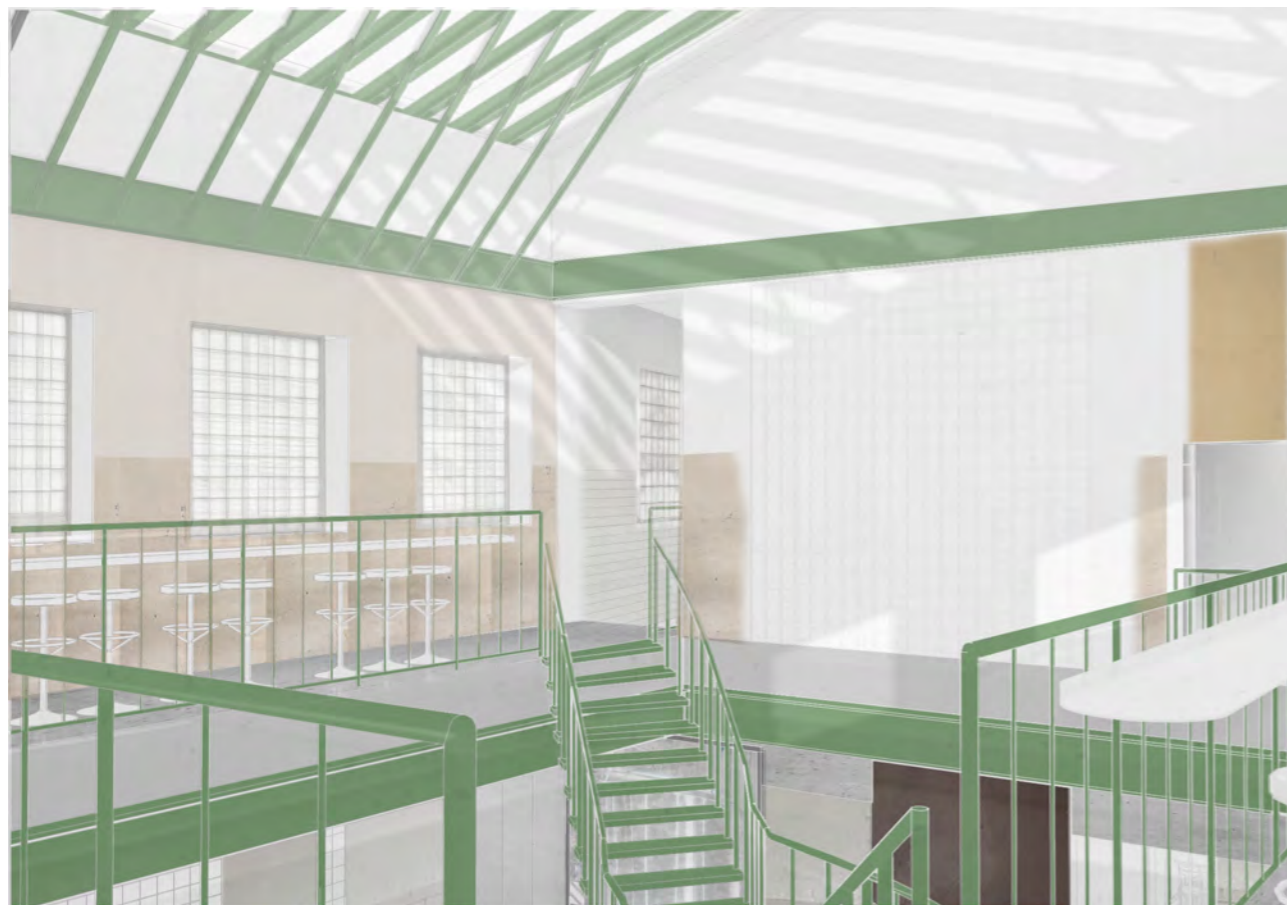
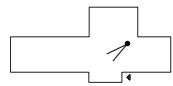
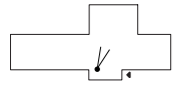


Floor 2

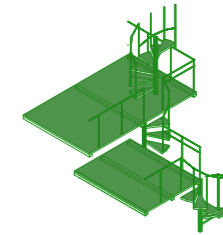
- Removed walls
- Added walls
- Existing walls
- Existing doors
- New doors



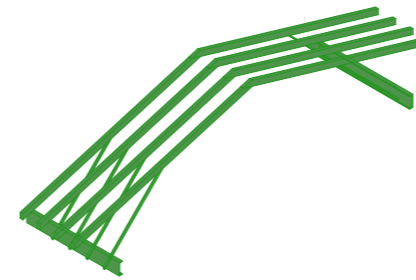
Interior architectural concept



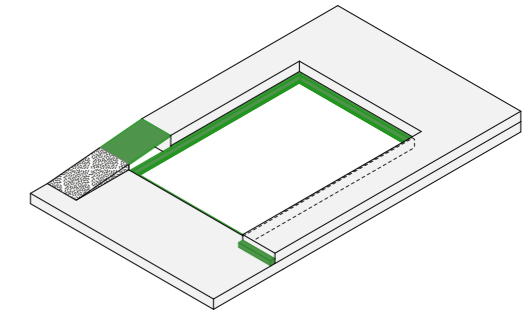
Bardetials



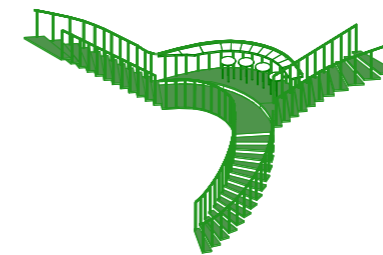
Platforms and stairs



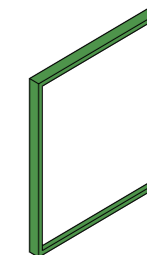
New roof construction



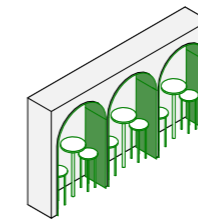
U-beams steel framing the hole



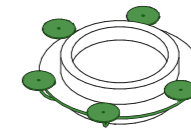
Staircase



Window frames



Openings and frames



Furniture

Diagram illustrating interior interventions

Reuse tiles

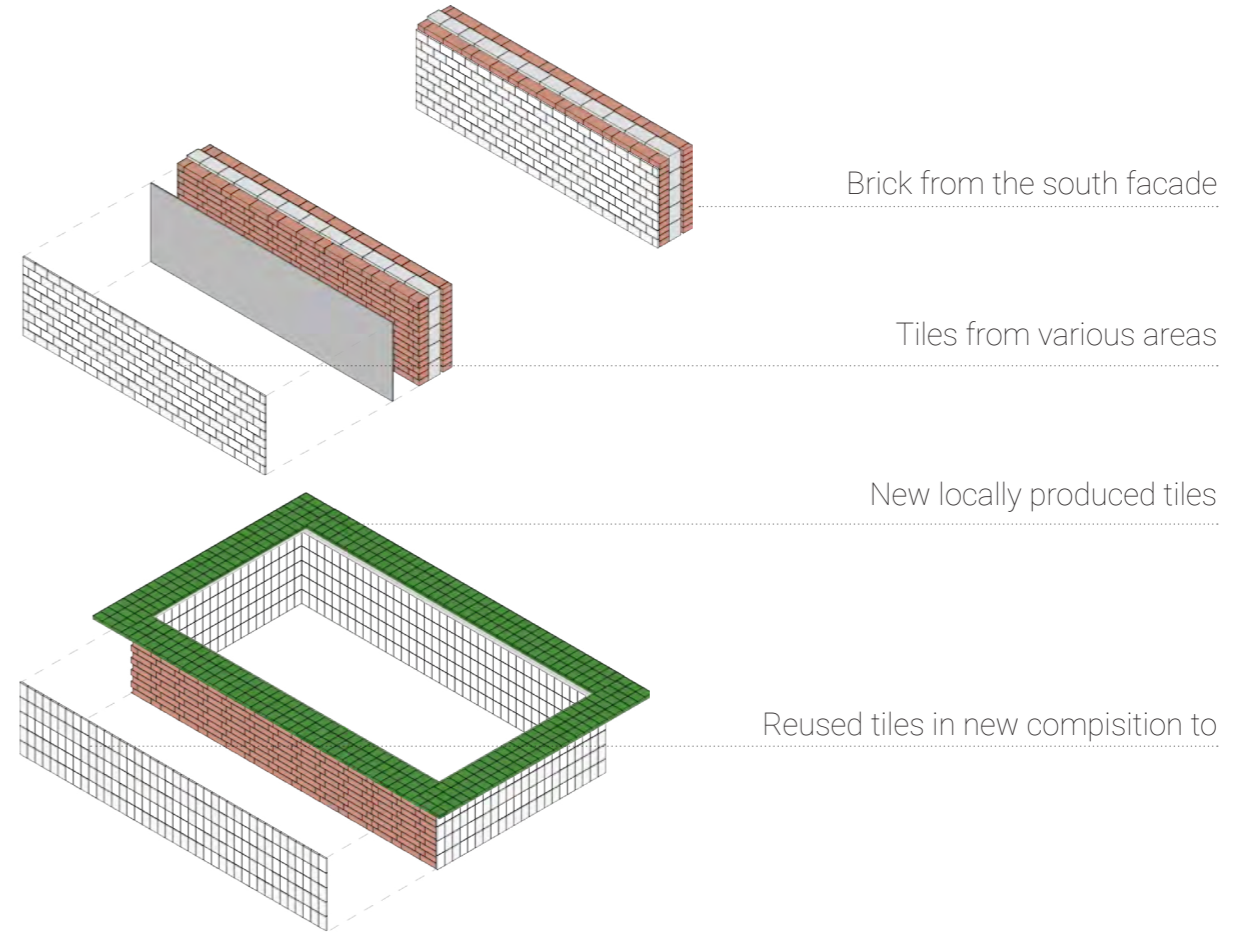
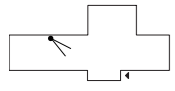
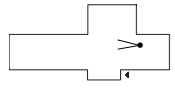


Diagram illustrating tiles and brick in new use

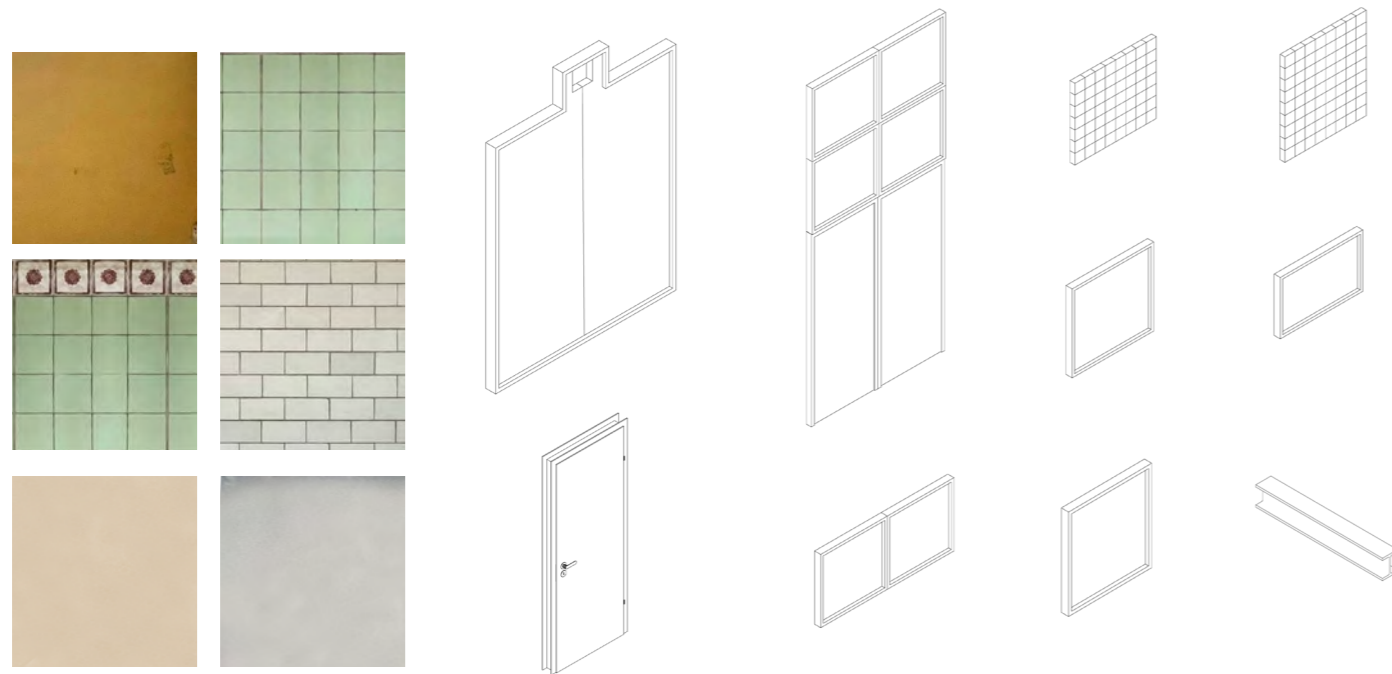
Section
Surface layer/Atmosphere



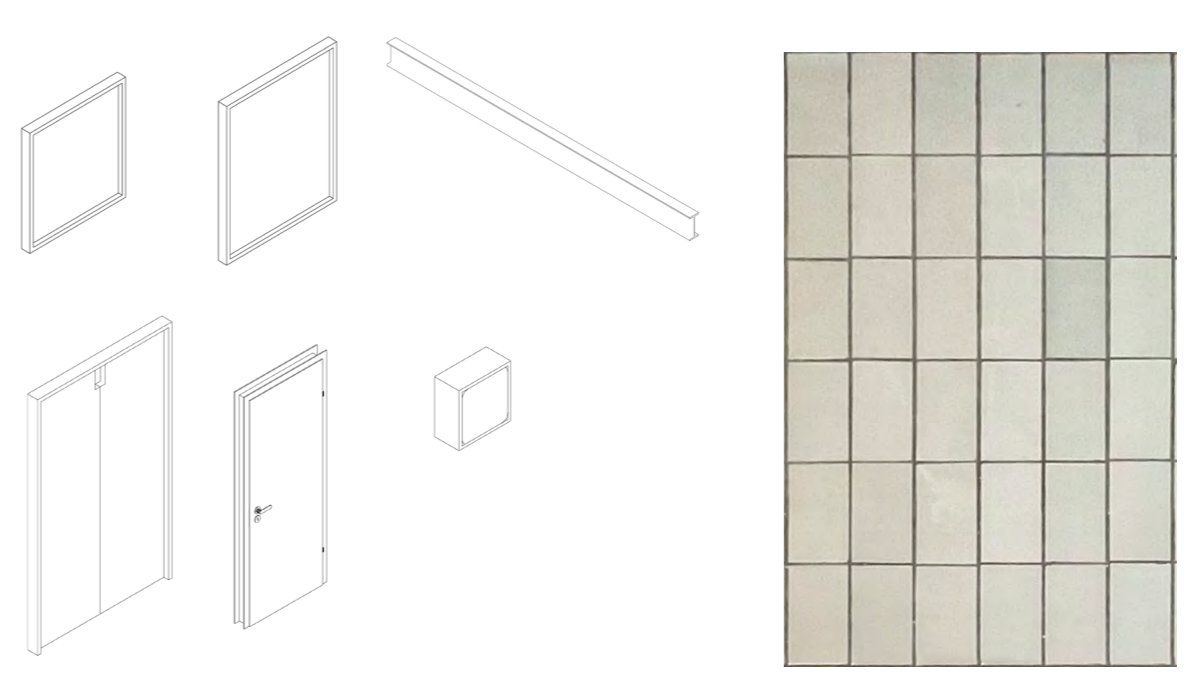
SCALE



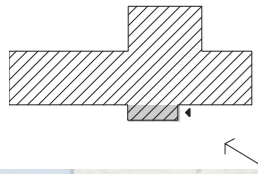
Kept



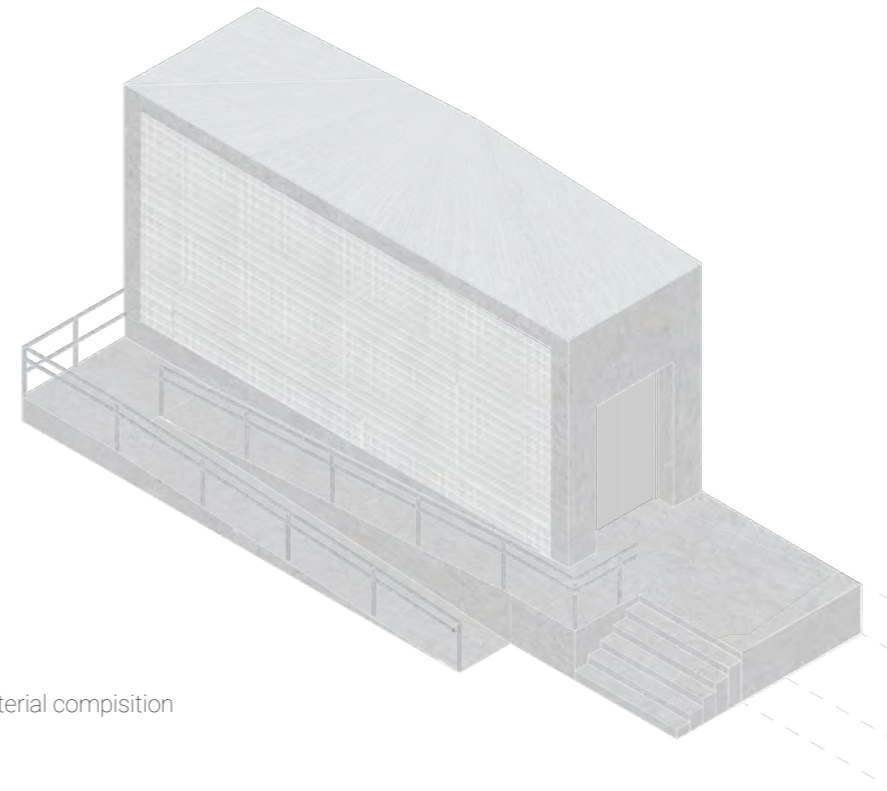
Reused



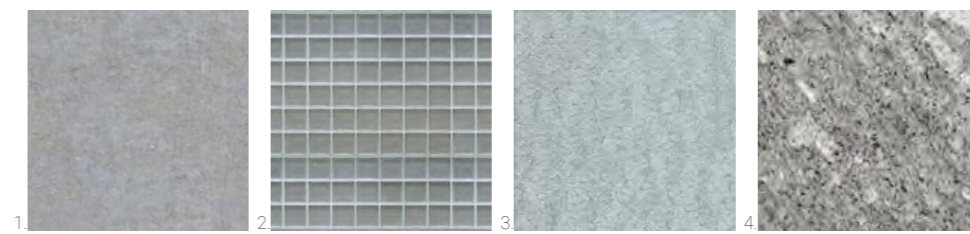
Design strategies
Exterior Architectural concept



Exterior perspective: Calm and monumental entrance
guiding the visitor into the large interior square.



Material composition



1. Concrete
2. Glass blocks
3. Galvanized sheet metal
4. Granite block from Ströms Stenhuggeri at Orust.

Exterior material palette

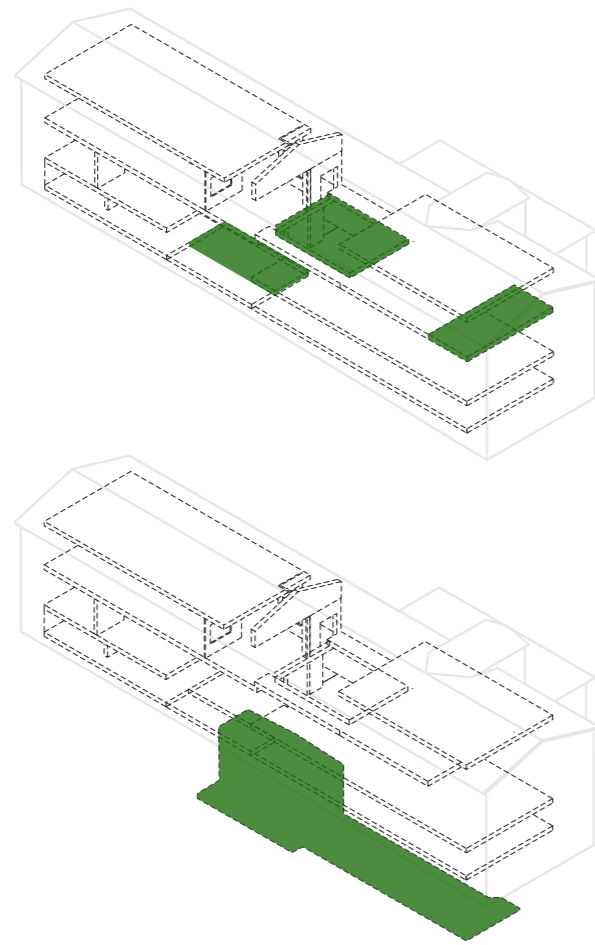


Diagram illustrating how to reuse removed floor slabs

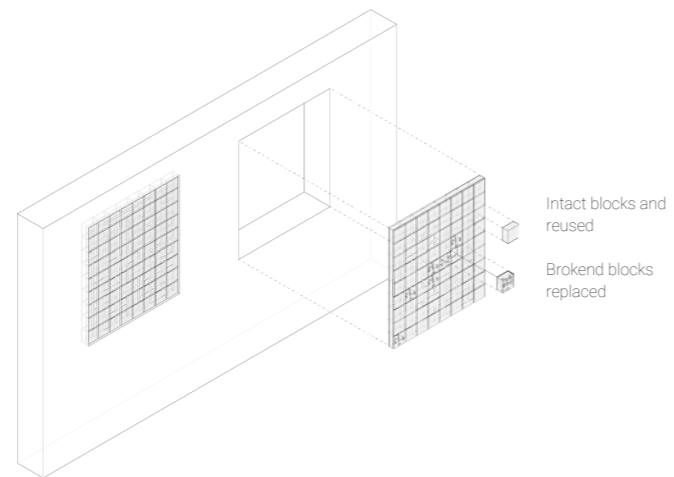
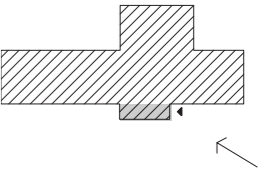
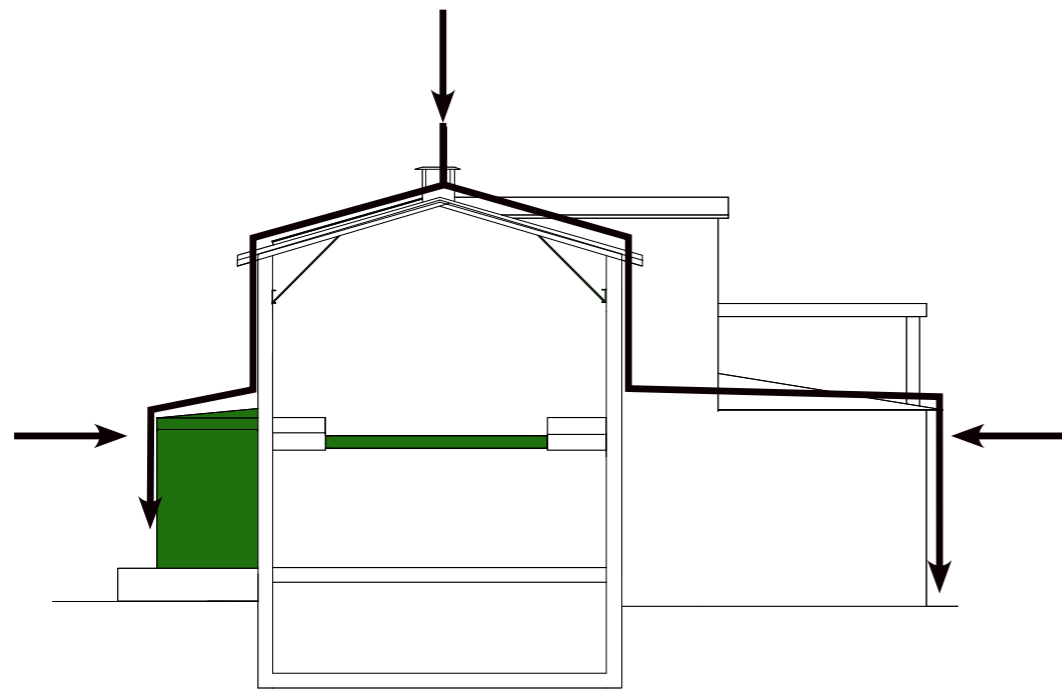


Diagram illustrating restoration of the glass block windows



Exterior perspective - material in relation to each other

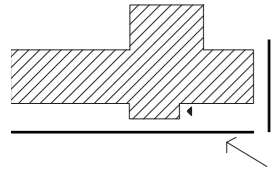


The addition helps to support the structure and stabilising the exterior wall.



Physical model in 1:50

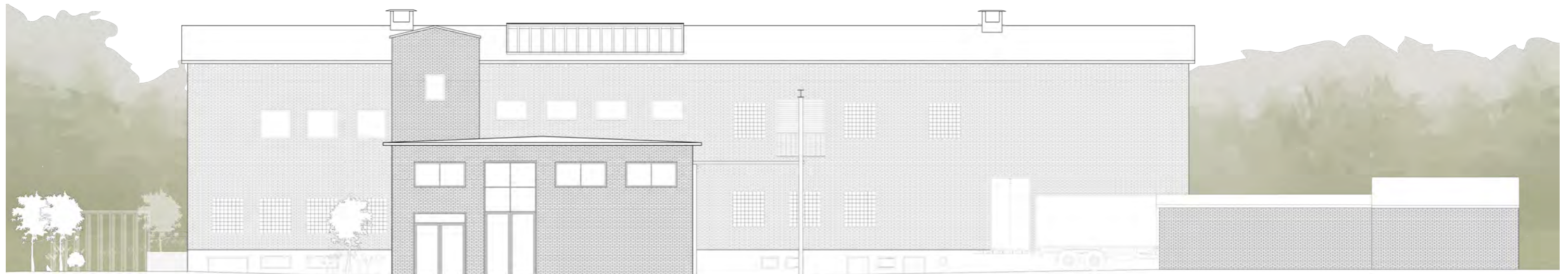
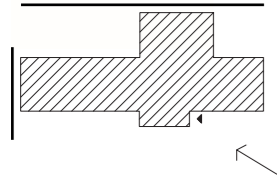
Facade
1:200
South
West



SCALE 1:200

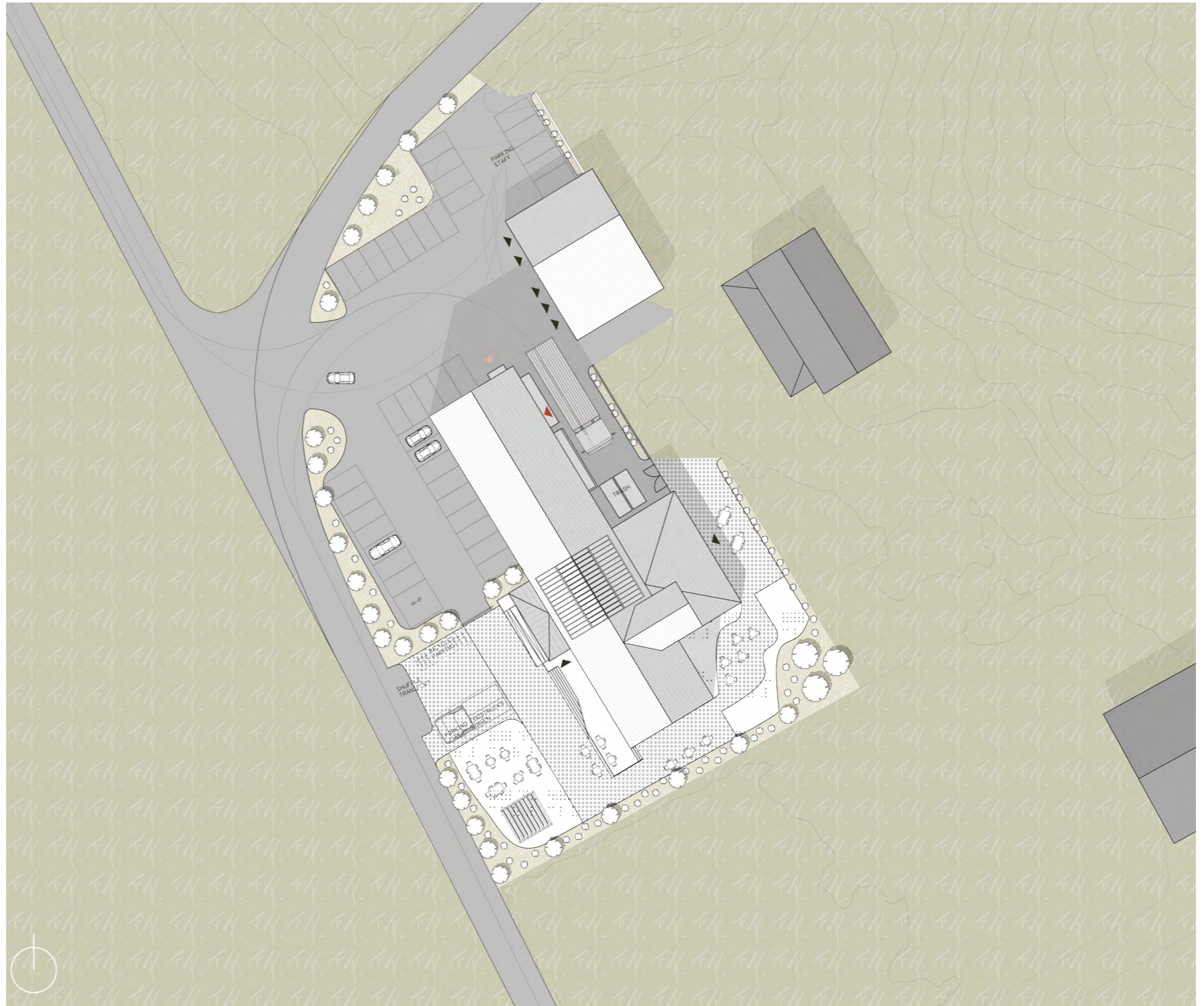


Facade
1:200
North
East



SCALE 1:200



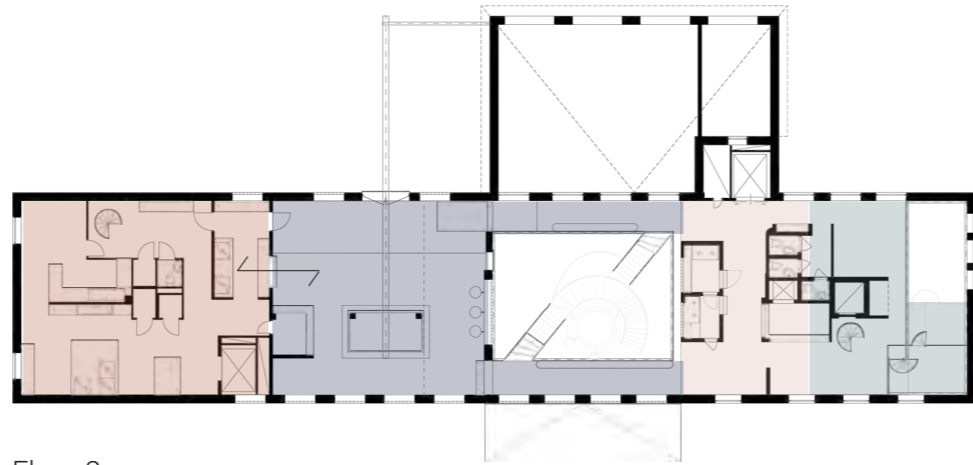


- LABLE
 ▲ Entrance staff
 ▲ Entrance visitors
 ▲ Loading
 ● Asphalt
 ● Gravel
 ● Granite block
 ● Surrounding buildings
 ● Surrounding greenery
 ● Grass

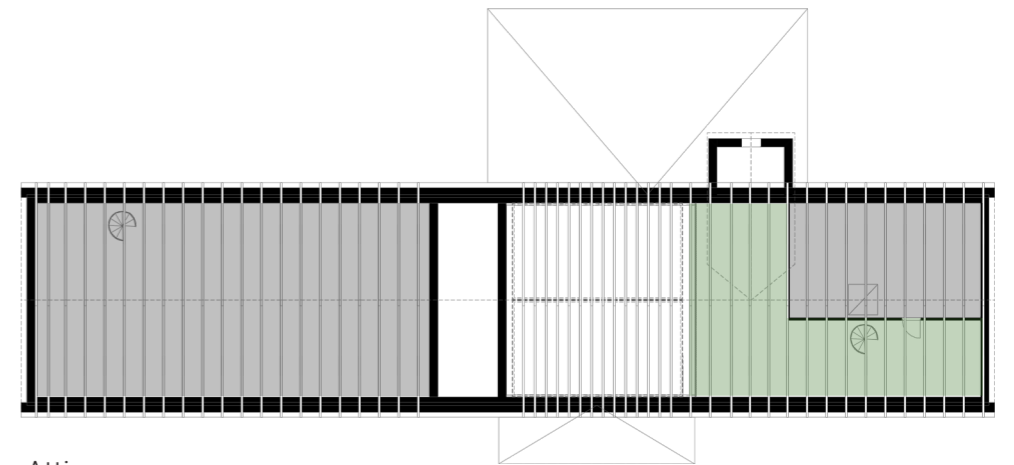
SCALE 1:500



Plans and sections
 Program and connections
 1:400



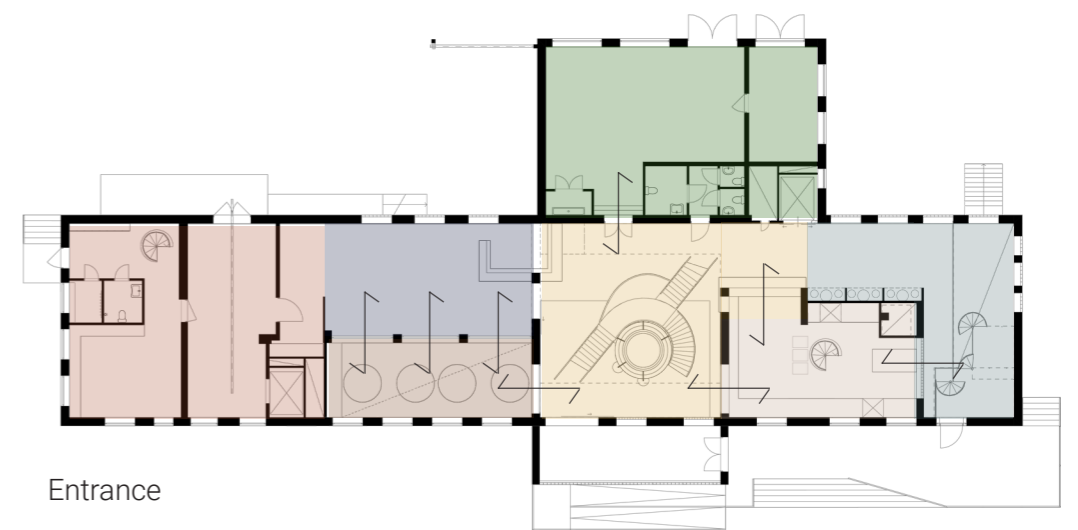
Floor 2



Attic

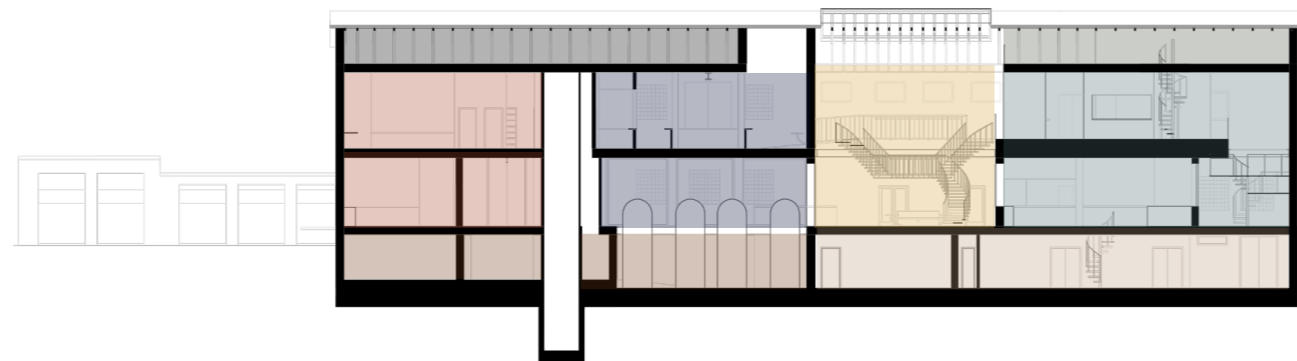
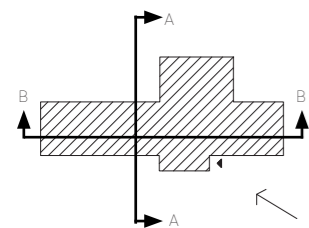


Basement

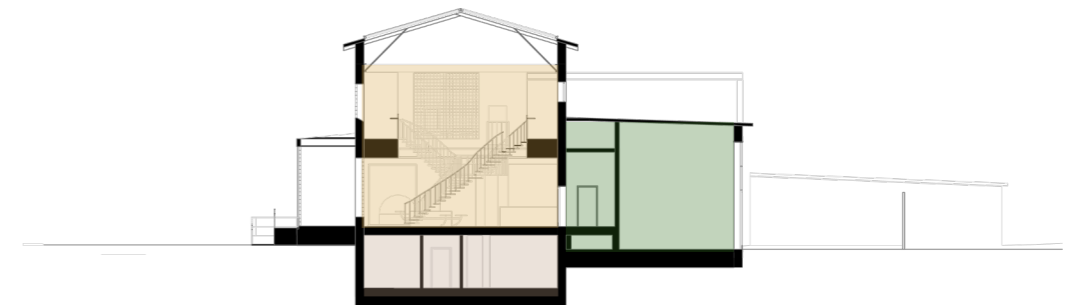


Entrance

- Visual connection to production
- Brewery
- Bakery
- Staff/restaurant kitchen
- Square
- Bar / restaurant area
- Cafe / restaurant area
- Workshop
- Technique / storage space



Section B-B

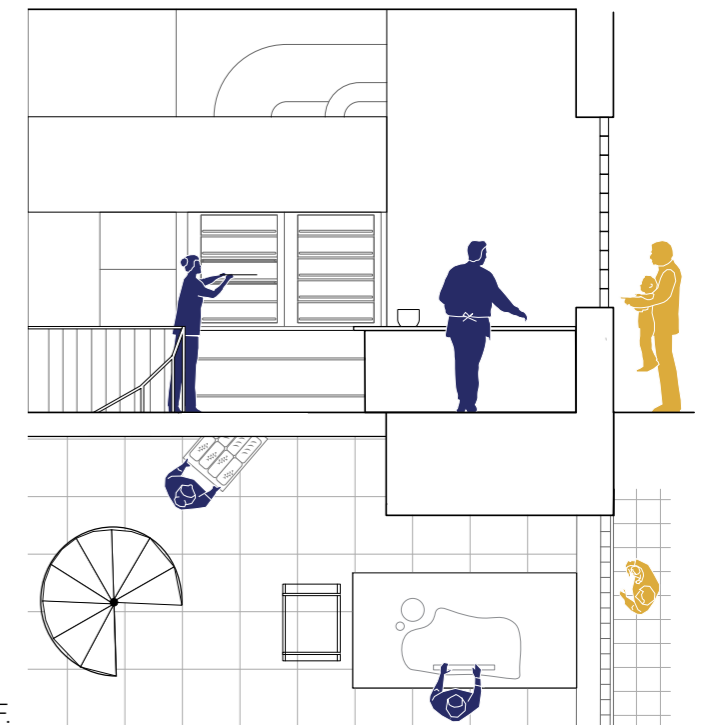
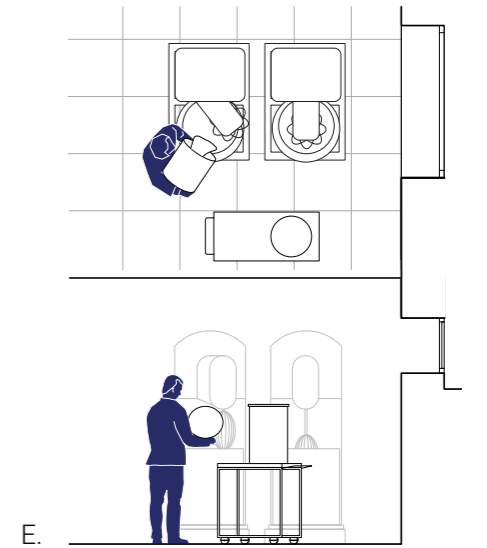
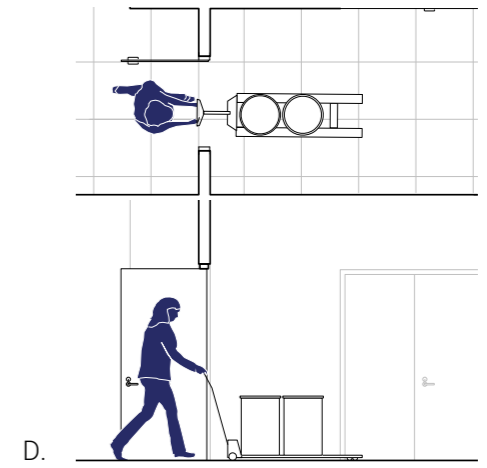
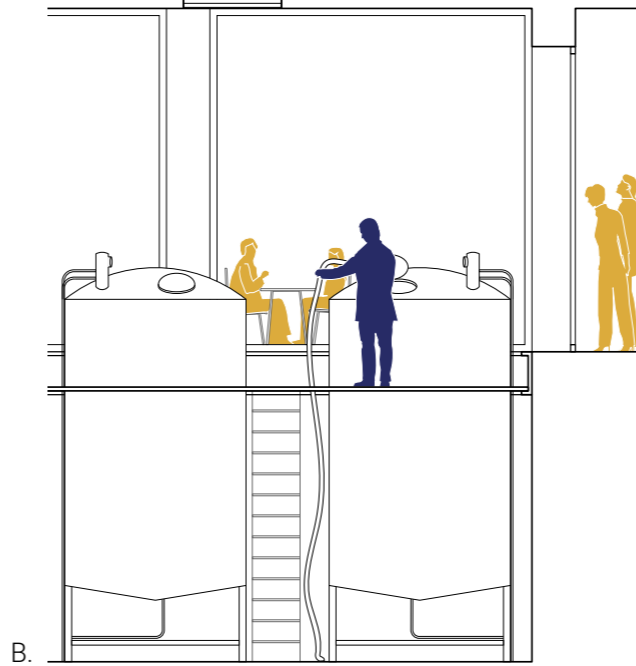
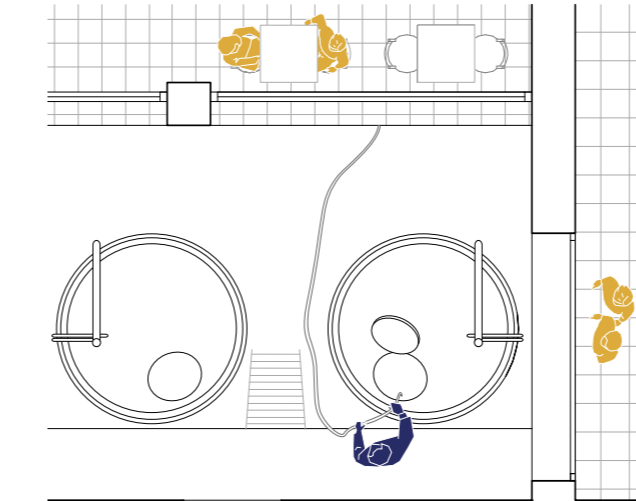
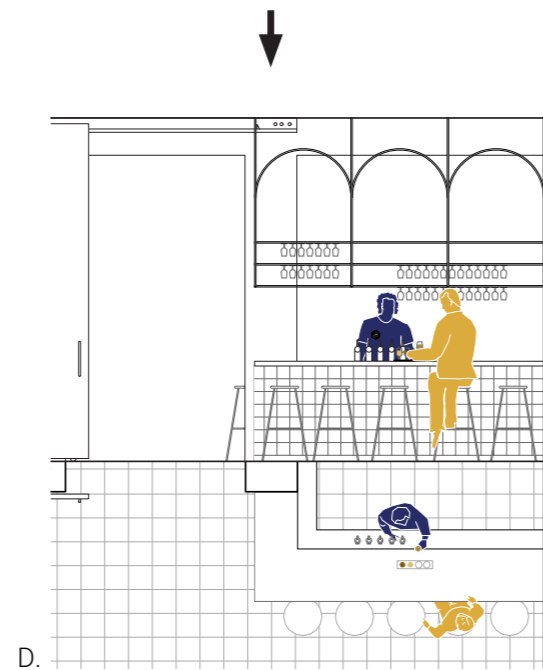
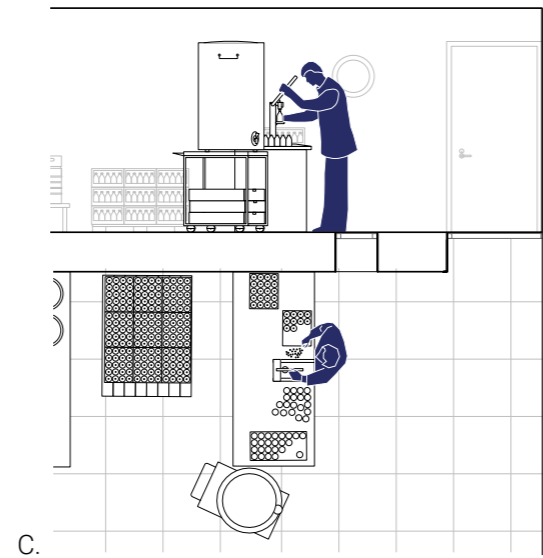
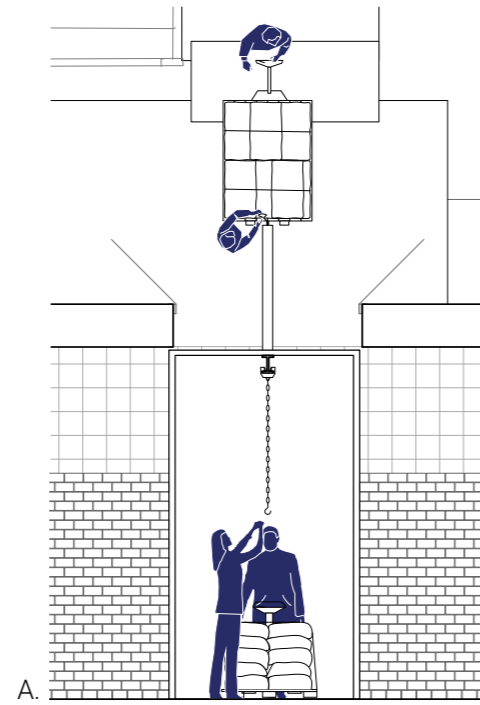
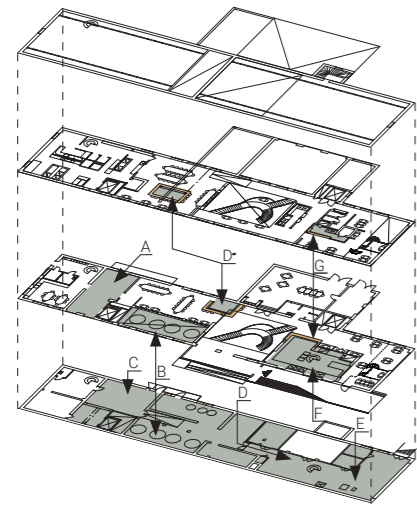
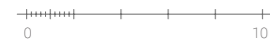


Section A-A



Production System of the brewery

● Visitors ● Staff



Logo and branding



Design of bottles, glasses, coasters, cartons, bags, t-shirts



Beer bottles

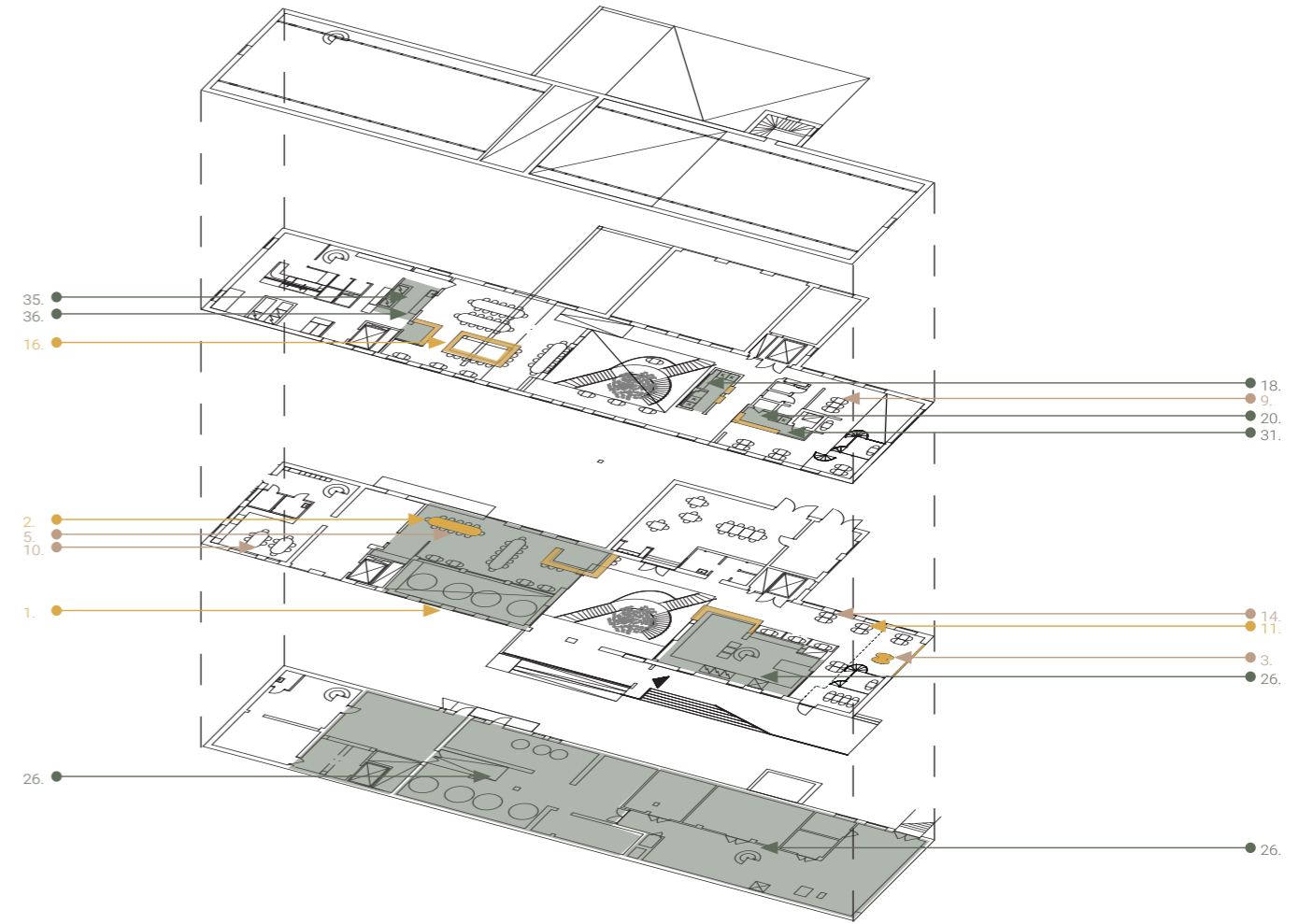
Scales of locality
Visitors

- Manufacturers — Hardworks
- Arts and crafts — Detailing and utilities
- Producers — Food and beverages

5. 2. 9. 16. 35. 3. 31. 14. 20. 29. 26. 11. 21.

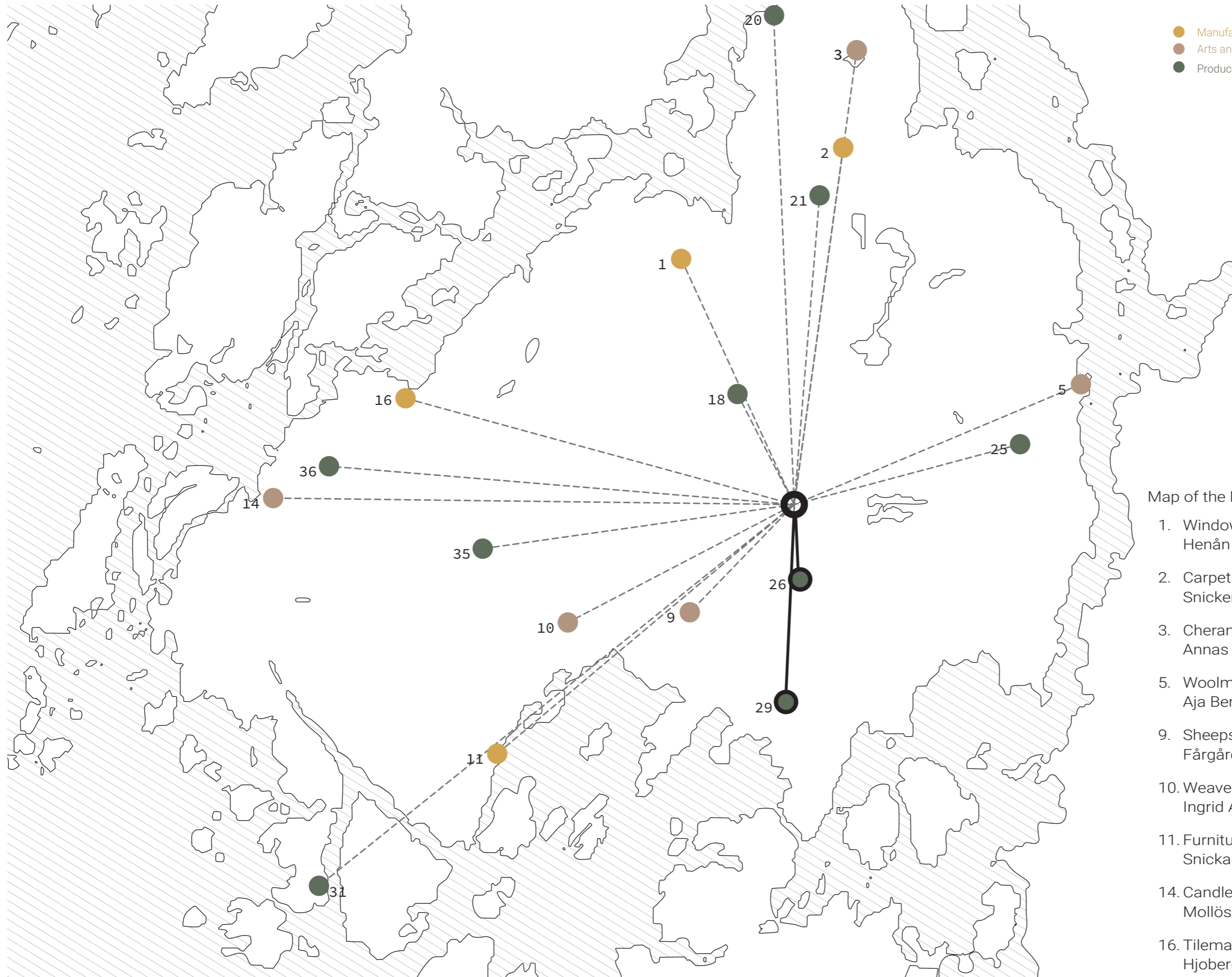


Scales of locality
Mejeriet



- | | | |
|------------------------------------|--|-------------------------------------|
| 1. Windows
Henån Glasmästeri | 11. Furniture Carpetner
Snickarepeter | 25. Beef
Rödets gårs |
| 2. Carpetner
Snickeriet i Ström | 14. Candlemakers
Mollösundsljus | 26. Bread
Herr bröd |
| 3. Chermics
Annas keramikbod | 16. Tilemakers
Hjobergs Kakelmakeri | 29. Brewery
Orust Ölfabrik |
| 5. Woolmaker
Aja Bergstrand | 18. Egg and vegetables
Häröds Gård | 31. Clams
Scanfjord Mollösund AB |
| 9. Sheepskin
Fårgården i Stala | 20. Coffee roastery
Markgrens Mörka | 35. Lamb, smokery
Håvs Lamm |
| 10. Weavery
Ingrid Andersson | 21. Dairy
Torp Farm | 36. Potatoes
Sörbo Gård |

Scales of locality
Orust

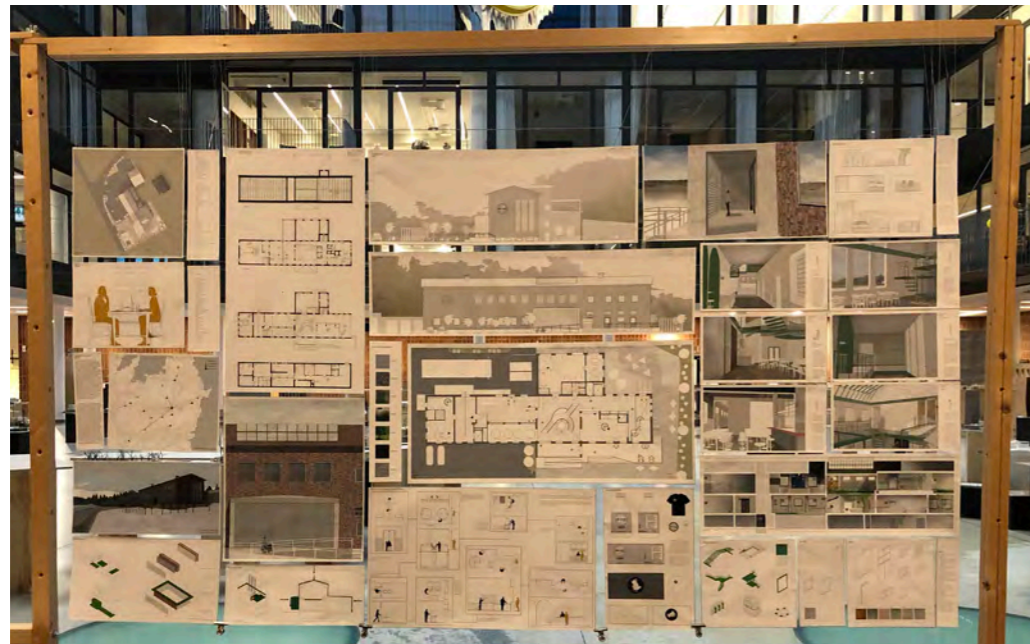


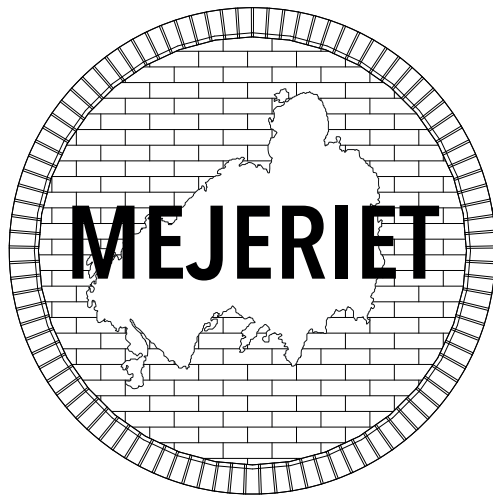
- Manufacturers
- Arts and crafts
- Producers
- Hardworks
- Detailing and utilities
- Food and beverages

Map of the Dairy factory content.

- | | |
|--|--|
| 1. Windows
Henån Glasmästeri | 18. Egg and vegetables
Häröds Gård |
| 2. Carpetner
Snickeriet i Ström | 20. Coffee roastery
Markgrens Mörka |
| 3. Chermics
Annas keramikbod | 21. Dairy
Torp Farm |
| 5. Woolmaker
Aja Bergstrand | 25. Beef
Rödets gårs |
| 9. Sheepskin
Fårgården i Stala | 26. Bread
Herr bröd |
| 10. Weavery
Ingrid Andersson | 29. Brewery
Orust Ölfabrik |
| 11. Furniture Carpetner
Snickarepeter | 31. Clams
Scanfjord Mollösund AB |
| 14. Candlemakers
Mollösundsljus | 35. Lamb, smokery
Håvs Lamm |
| 16. Tilemakers
Hjobergs Kakelmakeri | 36. Potatoes
Sörbo Gård |

Physical exhibition





THANK YOU!