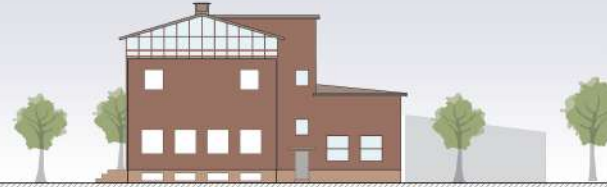


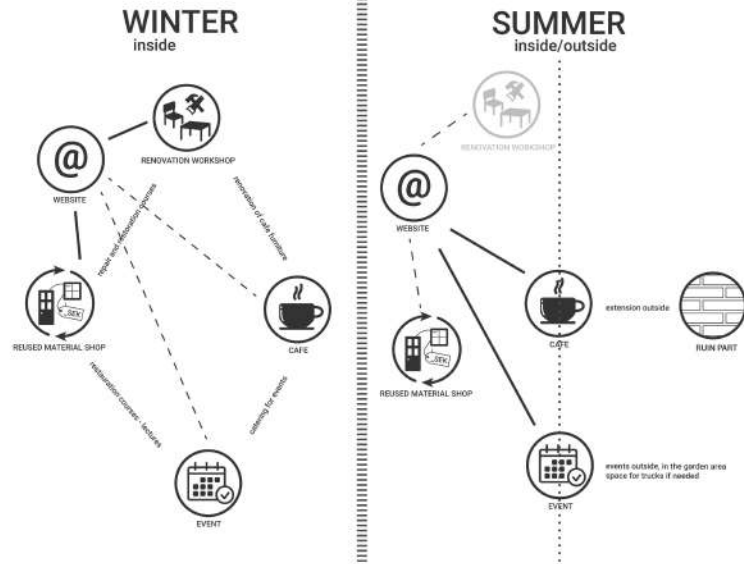




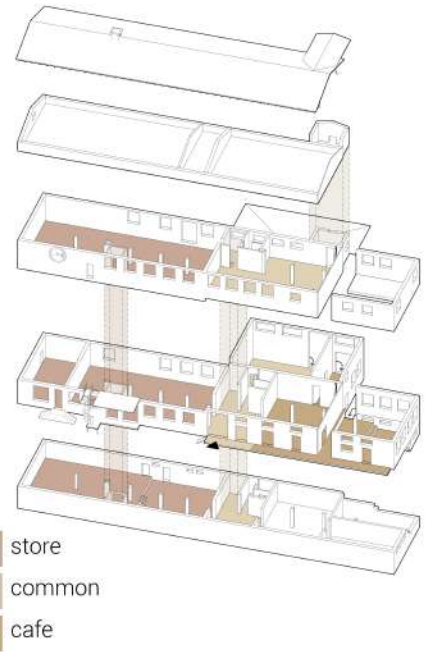
EAST FACADE  
1:200



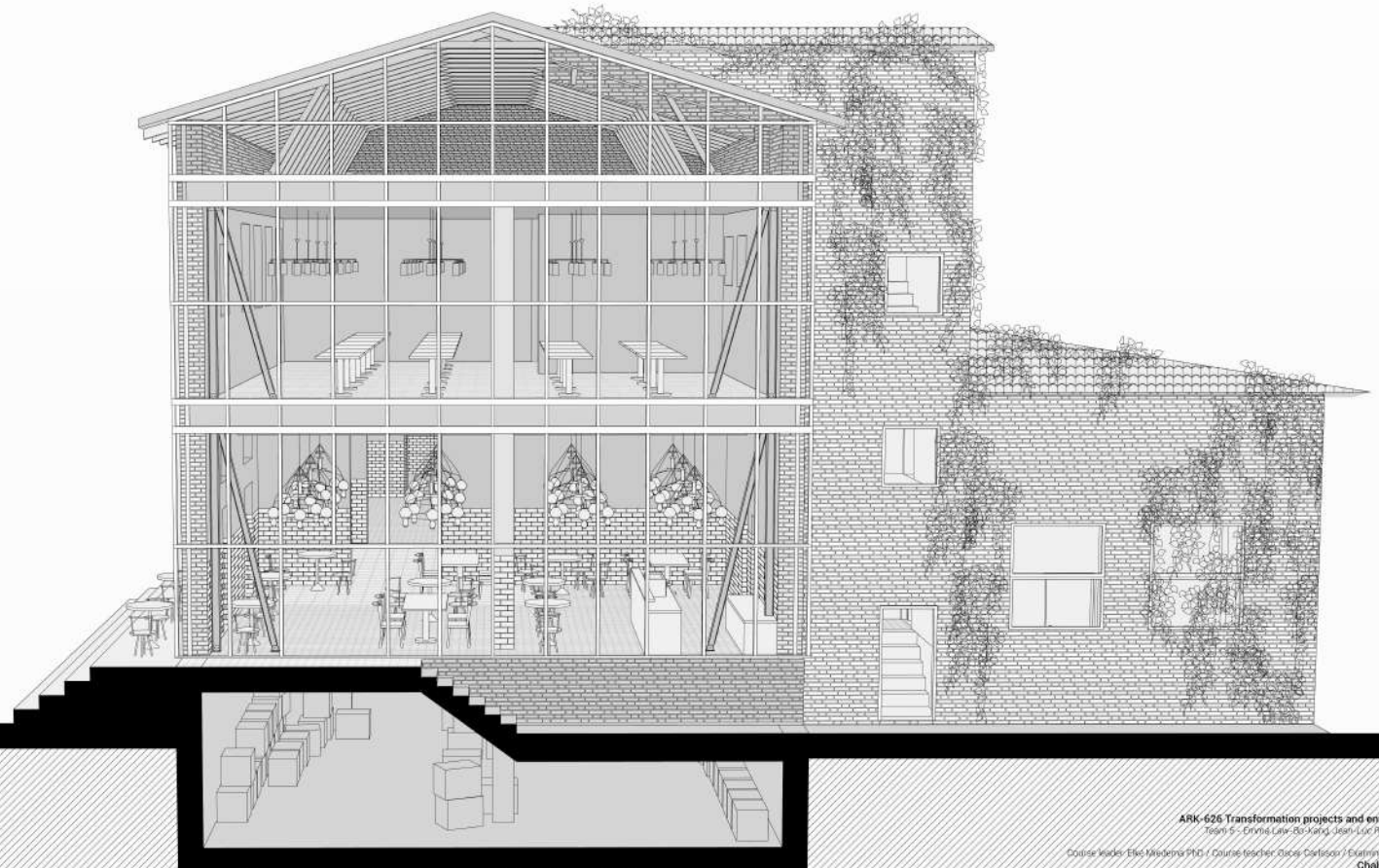
SOUTH FACADE  
1:200



USE THROUGH THE SEASONS

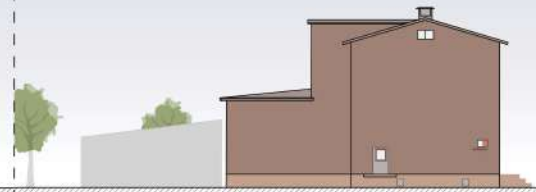


PROGRAM AXONOMETRY

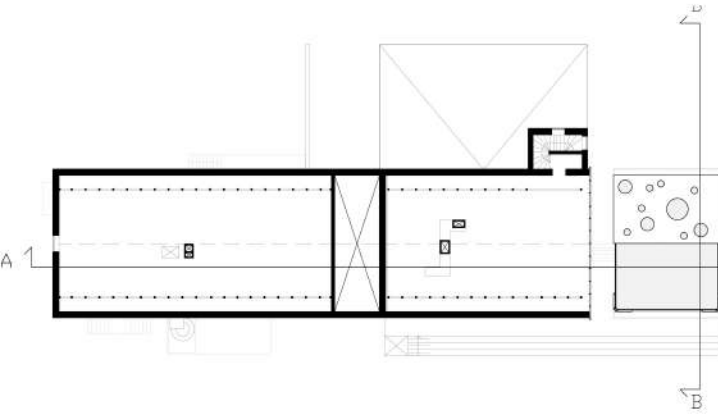




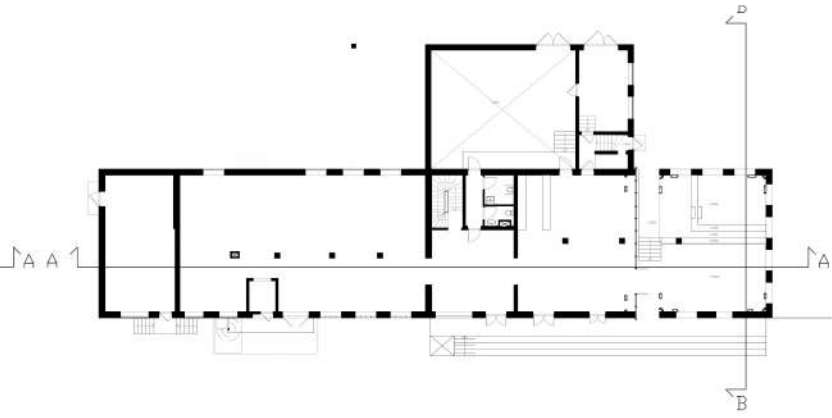
WEST FACADE  
1:200



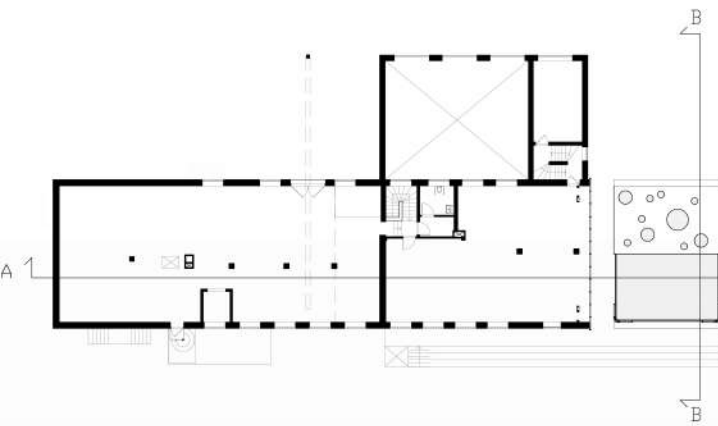
NORTH FACADE  
1:200



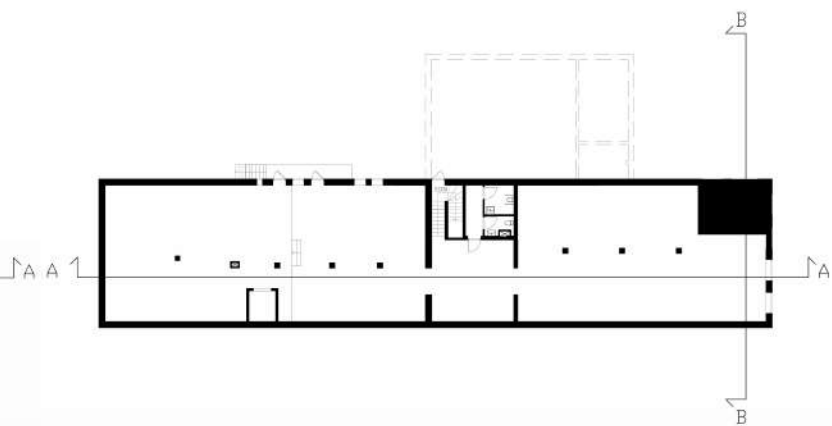
FLOOR 3 - ATTIC  
1:200



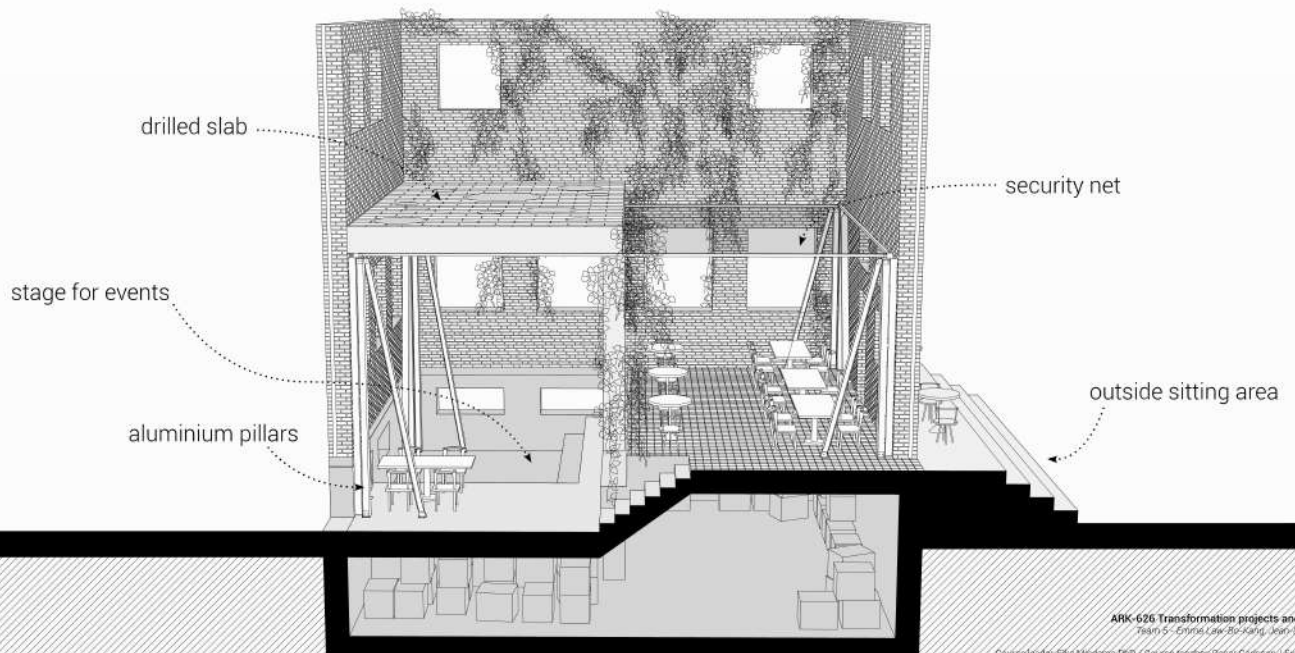
FLOOR 1 - ENTRANCE FLOOR  
1:200



FLOOR 2  
1:200



FLOOR 0 - BASEMENT  
1:200



RENOVATED PART

gentle renovation

- change windows
- insulate floors in the main / central part
- installation of the café (inside part)

PREPARE THE INSTALLATION OF THE WALL

- create a separation in the basement (new wall to divide the renovated part and the ruin part)
- fill the basement under the ruin part
- install new pillars inside to reinforce walls

THE CUT

cut the building

- remove the 'slice'
- add concrete bars
- add the new glass wall

RENOVATION WORKSHOP



REUSED MATERIAL SHOP



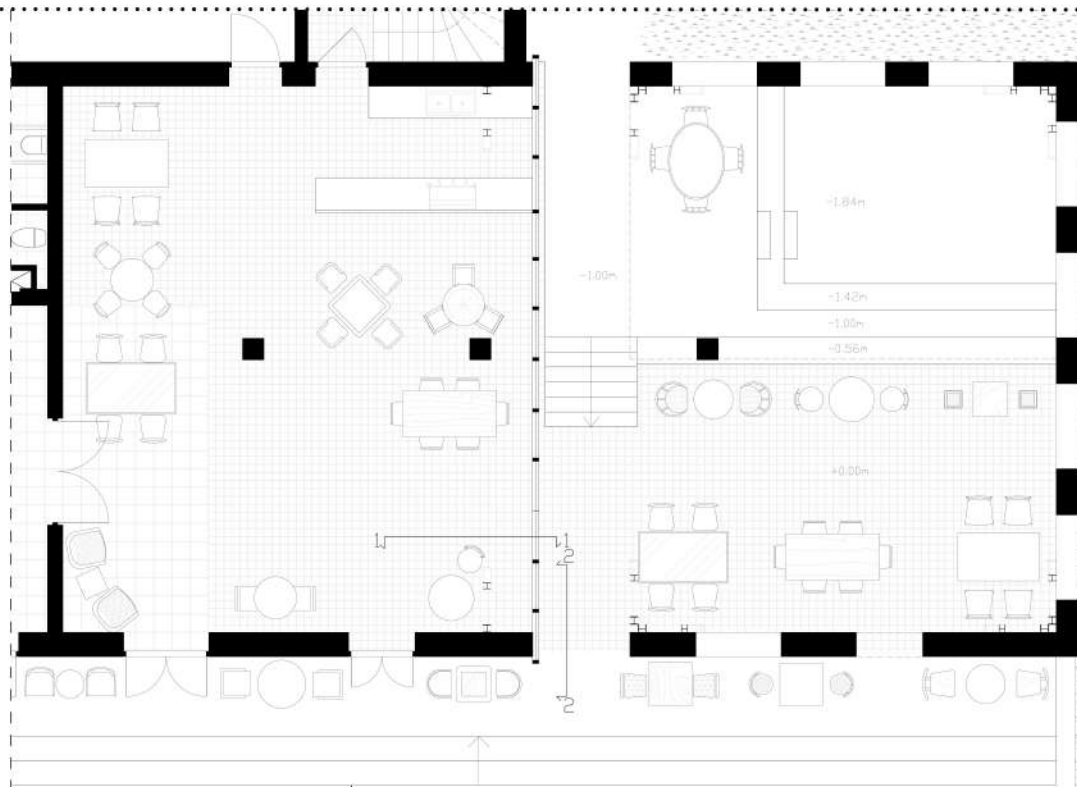
TIMELINE  
Realisation of the project



NEW PILLAR DETAIL  
1:20



NET DETAIL OF THE RUIN PART  
1:20



ZOOM-IN PLAN OF THE RUIN PART  
1:50



ZOOM-IN SECTION OF THE RUIN PART  
1:50



ZOOM-IN ELEVATION OF THE RUIN PART  
1:50

THE RUIN PART

CAFE SET-UP

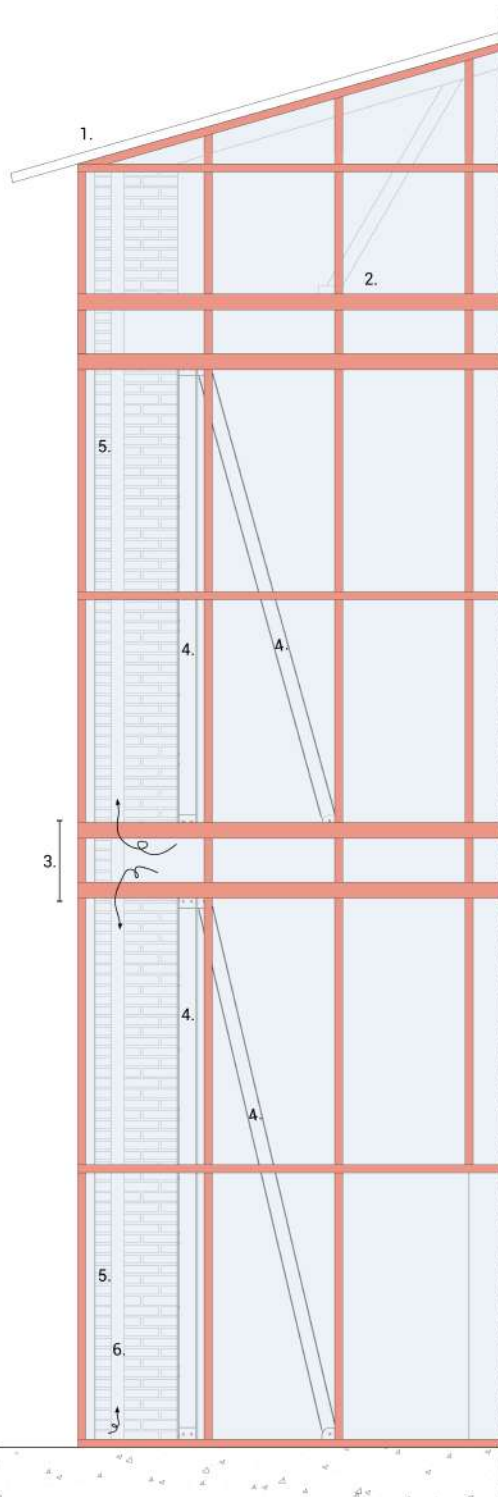
> evolution of the ruin through the time

securing the ruin part

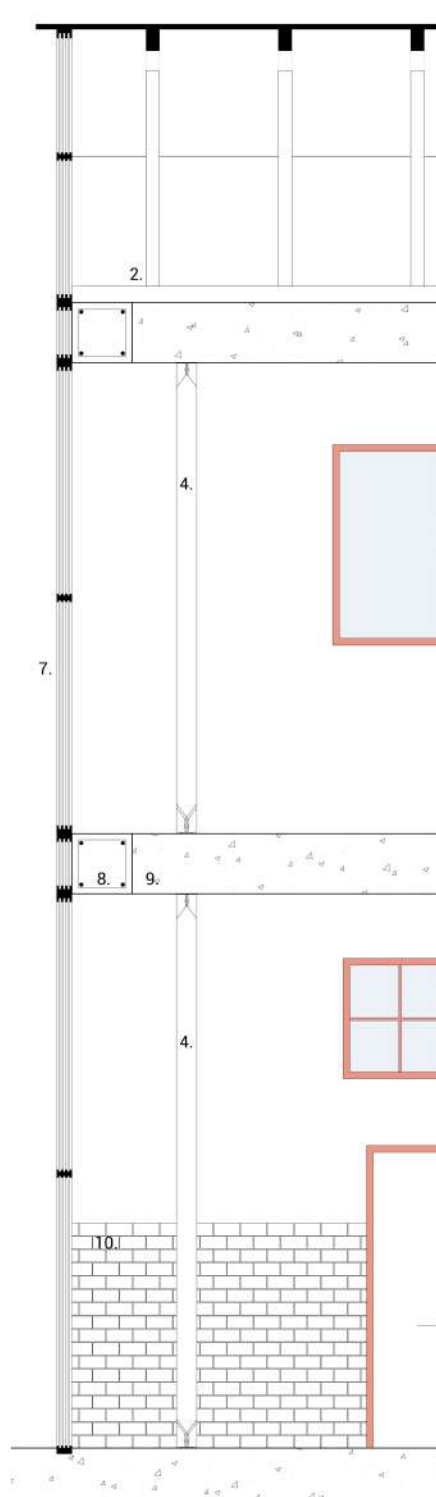
- add the net to protect from falling parts
- remove the roof
- lower down the walls and last floor

installation of the cafe outside

spontaneity



DETAILED FACADE 1 - 1 of the glass wall  
1:20

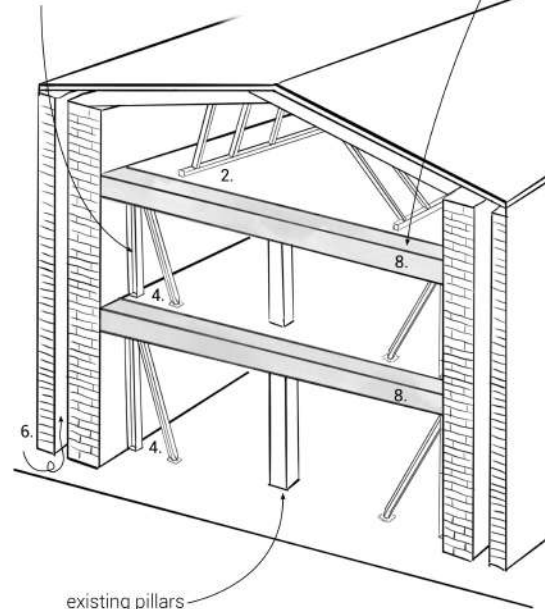


DETAILED SECTION 2 - 2 of the glass wall  
1:20

1. red frame for the glass wall to fit with the new windows
2. wood beams in the attic
3. thicker horizontal lines to highlight the different floors and the structure
4. steel pillars
5. brick wall
6. natural ventilation
7. triple glazed glass
8. reinforced concrete beam with metal bars
9. existing concrete slab
10. existing tiles on the wall in the workshop area

**STRUCTURAL ADDITIONS**  
to welcome the glass wall

- concrete beams with metal bars to reinforce the floors
- + support for the glass wall
- add pillars to maintain the brick walls
- + prevent from falling over while cutting the building



existing pillars