

NORDIC
ARCHITECTURE
NORDIC WOMEN

TIETGENKOLLEGIET
LUNDGAARD & TRANBERG ARKITEKTER

ARCHITECT	4
BUILDING	6
DRAWINGS	14
CONCEPT	20
MODELS	22

LENE TRANBERG

"Good architecture should be a generous gesture toward site, surroundings and society."

- Lundgaard Tranberg Arkitekter (LT Arkitekter)

Danish architect Lene Tranberg was born in 1956 (Wikipedia). In 1977 Tranberg began her architectural studies at the Royal Danish Academy of Fine Arts. Following a victorious partition in a competition during her final years of studies, Tranberg founded Lundgaard Tranberg Arkitekter together with Boje Lundgaard in 1985 (LT Arkitekter).

The firm was founded with a focus on construction technology insight and detailing, yielding interdisciplinary collaborations within the firm. Further the firm's core values are rooted in a Nordic architecture tradition where humanism is a central focus.

The firm has grown over the years and gained increased recognition since the shift of the millennia (LT Arkitekter). In the early 2000s three defining projects were to be realised; The Wedge, Royal Playhouse and Tietgenkollegiet. Tietgenkollegiet, its intentions, concept and structure is to be understood and interpreted through model making methods in this project.



© Architecture Talks

TIETGENKOLLEGIET

The student residence by architect Lene Tranberg is a showcase project from Copenhagen. The clients' brief was to design the „dormitory of the future“.

The circular shape of the building is inspired by the traditional southern Chinese tulou round houses and is a characteristic feature of the innovative design. The building has seven floors with 360 rooms of different sizes, a café, a communal hall and a laundry on the ground floor.

The rooms are placed facing the outside with a view of the surrounding city, while the common rooms and hallways are oriented towards the courtyard placed at the centre of the dormitory.



© Jens M. Lindhe

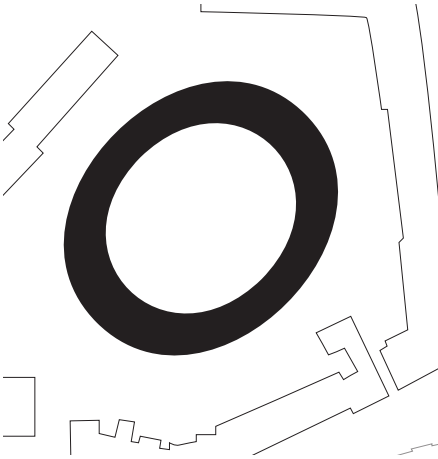


© Jens M. Lindhe

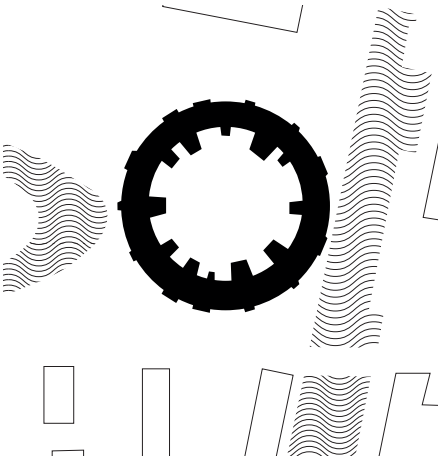
SCALE

During group study visits to Stockholm and within the city of Gothenburg, we found appreciation for the scale of Tietgenkollegiet. The scale is approximate to the size of both residential building Otterhällan in Gothenburg and the Royal Castle of Sweden in Stockholm.

Through this comparison we found an understanding of the complexity of Tietgenkollegiet with its dynamic and seemingly random design.



Otterhällan, Gothenburg



Tietgenkollegiet, Copenhagen



Royal Castle, Stockholm

CONTEXT

Tietgenkollegiet is located in the south of Copenhagen's city centre. The neighbourhood Ørestad Nord is considered a vibrant area that also houses the University of Copenhagen Amager, IT University of Copenhagen and DR Danish Broadcasting Corporation as well as a number of residential buildings. New buildings are continually added and with them more people and more life. Students are able to walk to many of the university buildings or the next metro station. To the city centre it is also easy to take your bike.

The canal directly in front of the building invites students and locals to picnic on the grass during summer or ice skate during cold winters.



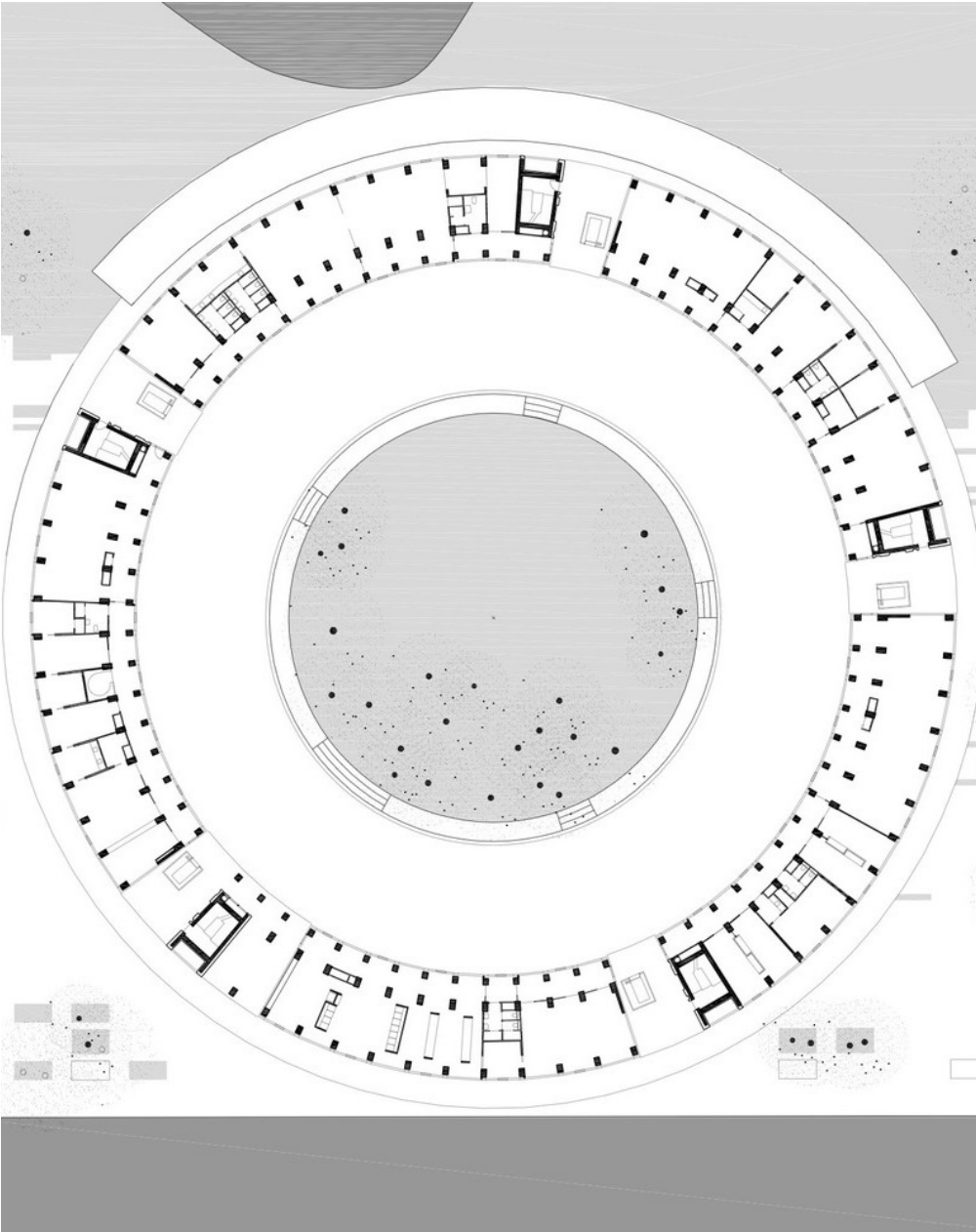
INTERIORS

The students' 25 to 33 square metre rooms are located on the six residential floors towards the inside. Each one is equipped with their own bathroom and built-in furniture. The walls are made out of visible concrete and matches with the wooden wardrobe. Despite the built-in wardrobe there is lots of space for individual furnishing. Towards the courtyard, the total of thirty kitchen/living rooms are housed in staggered stacked cubes that reach out up to eight metres.

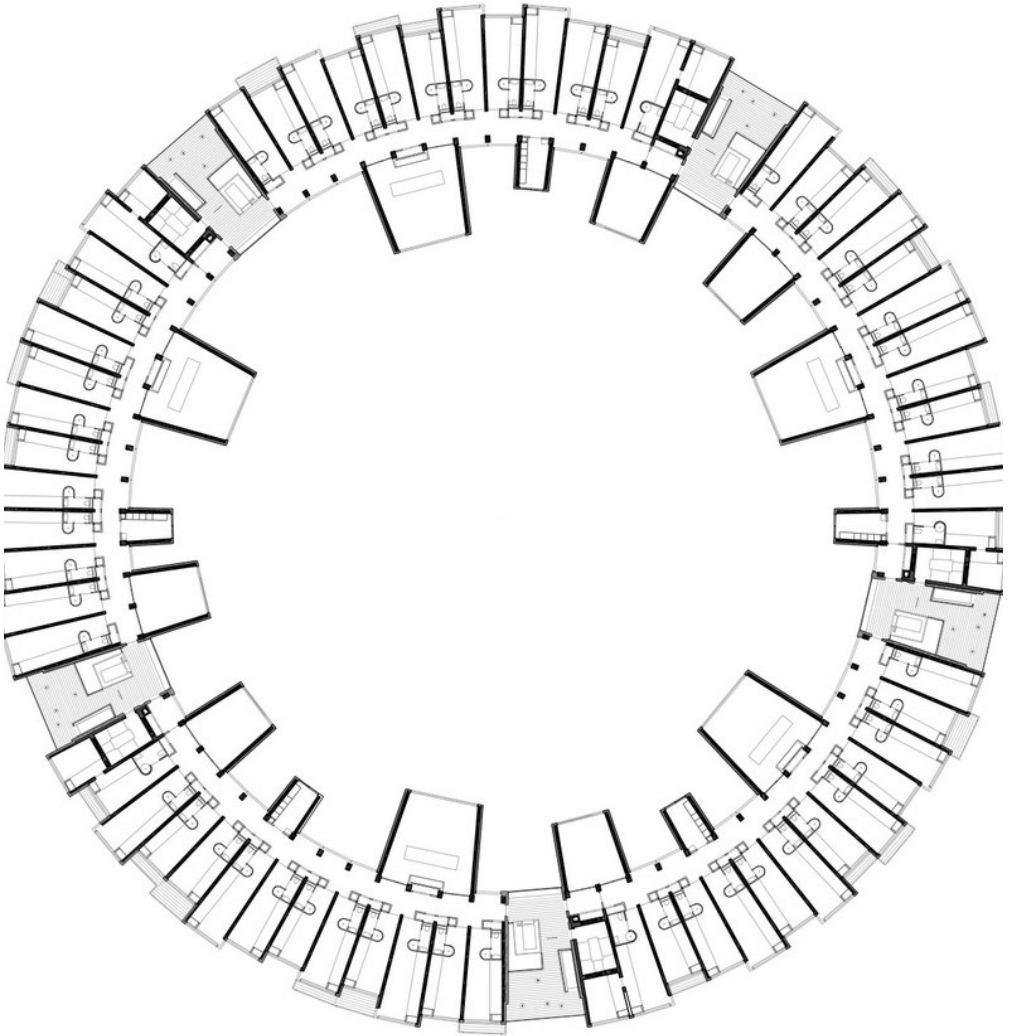


FLOOR PLANS

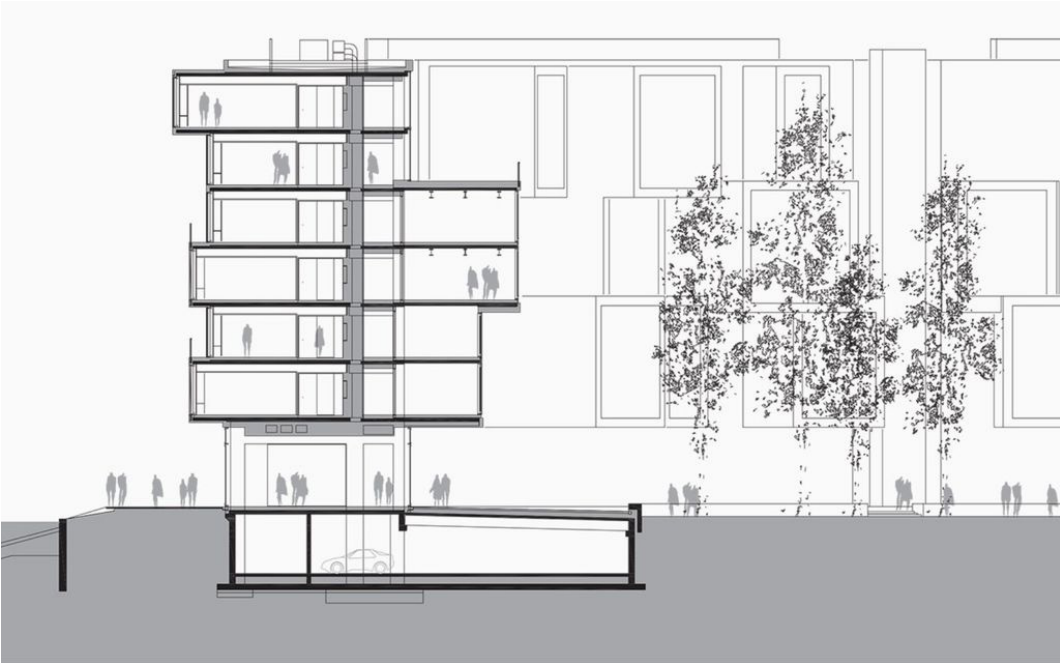
Ground Floor

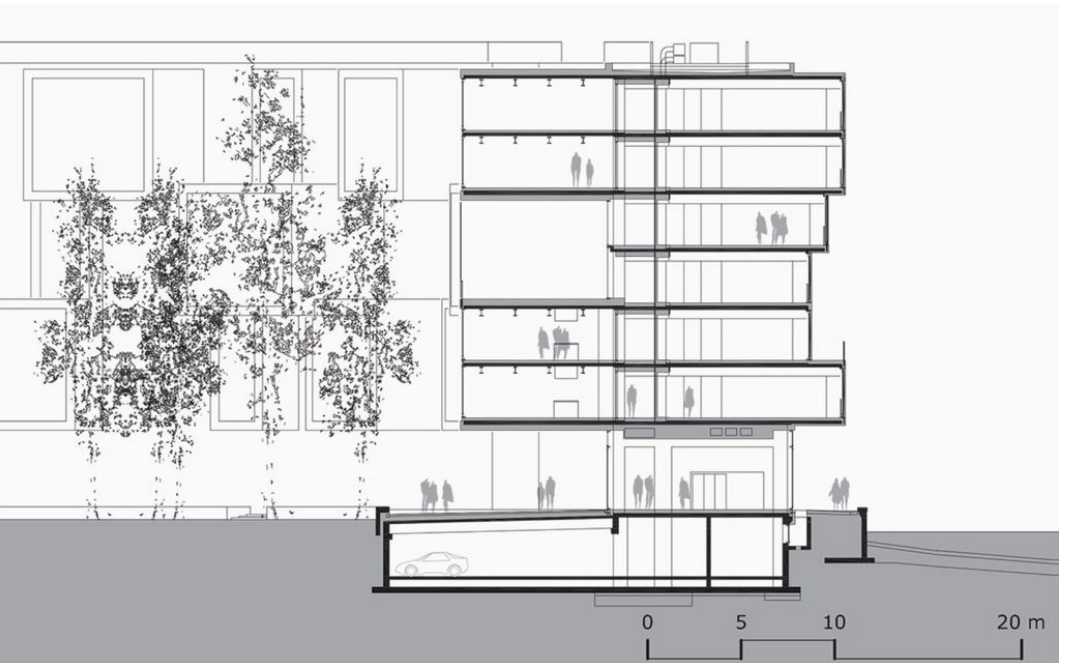


Floor with Dormitories



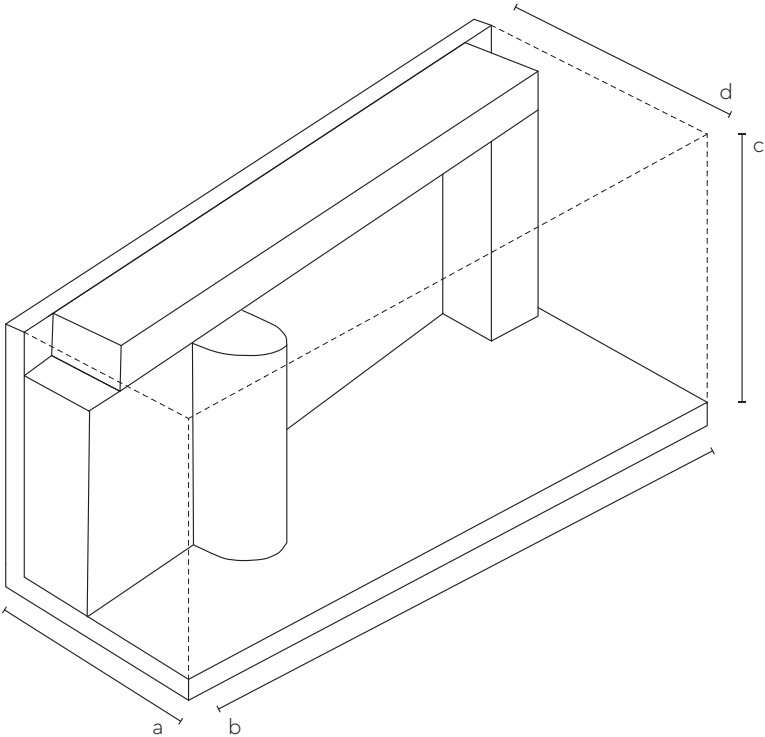
SECTIONS





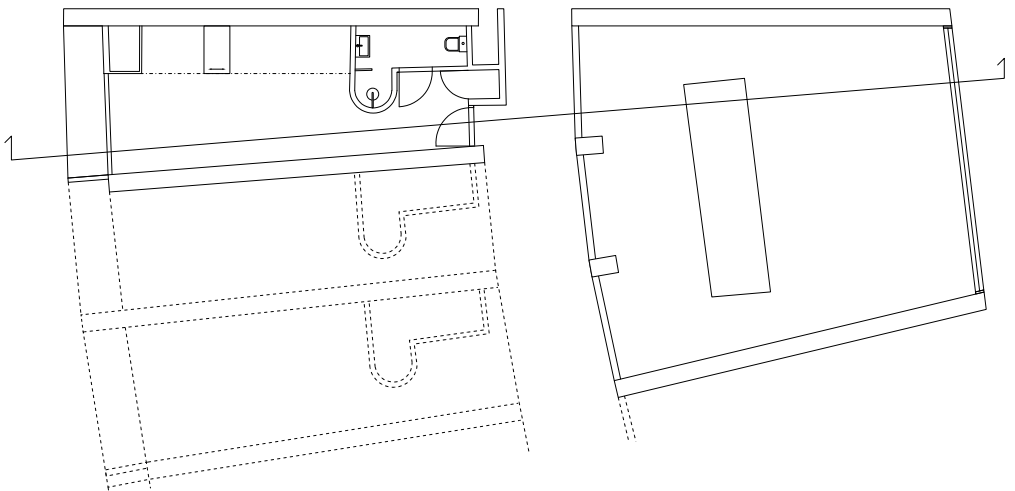
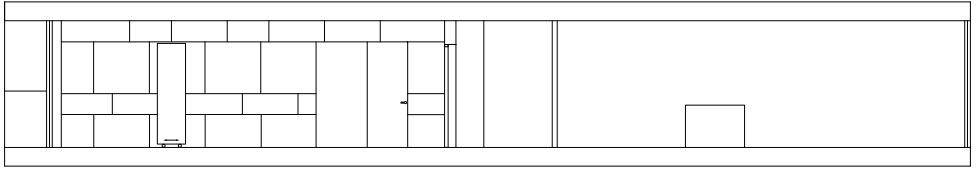
ZOOM-IN

Apartment



- a. 2700
- b. 8500
- c. 2700
- d. 3500

Apartment and kitchen

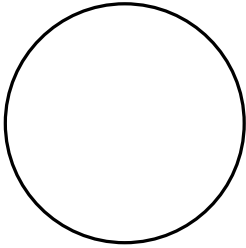


CONCEPT

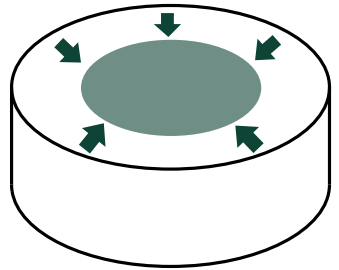
Lene Tranberg describe the process developing Tietgenkollegiet as a:

"Search for an organising structure that encourages the individual to interact with others – feeling of belonging to something larger, without forcing interaction."

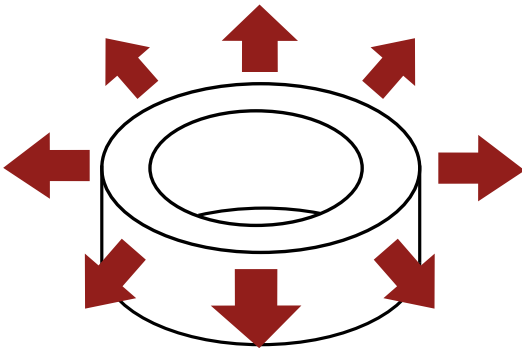
The circular shape of the building is meant to be a symbol of a community. The layout of the building is well thought out and is intended to promote social togetherness without limiting private spaces of retreat. The possible problems of a closed circular courtyard, such as noise pollution or too much social control, were counteracted by an „inverse“ spatial organisation that turns the interior, i.e. privacy, inside out: the rooms projecting towards the courtyard are the common rooms with spacious terraces on the roofs of the cubes, while the private rooms are located in the outer ring, some of them with balconies.



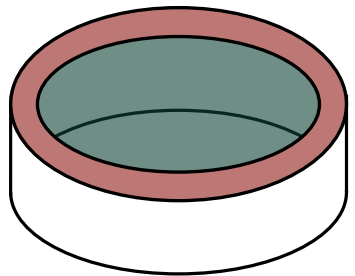
Community



Communal



Individual

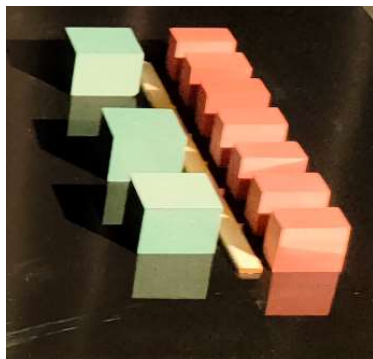
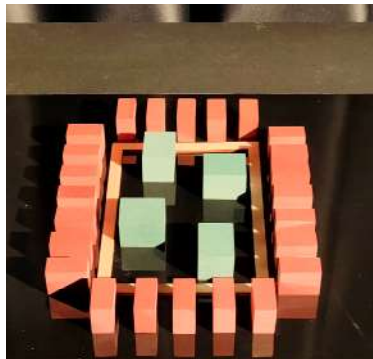
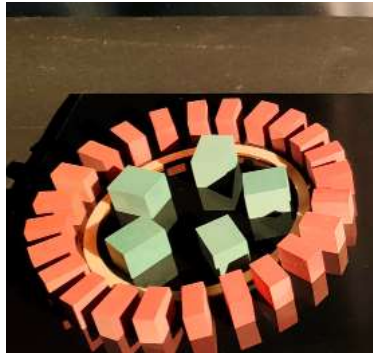


Encounter

CONCEPT MODEL

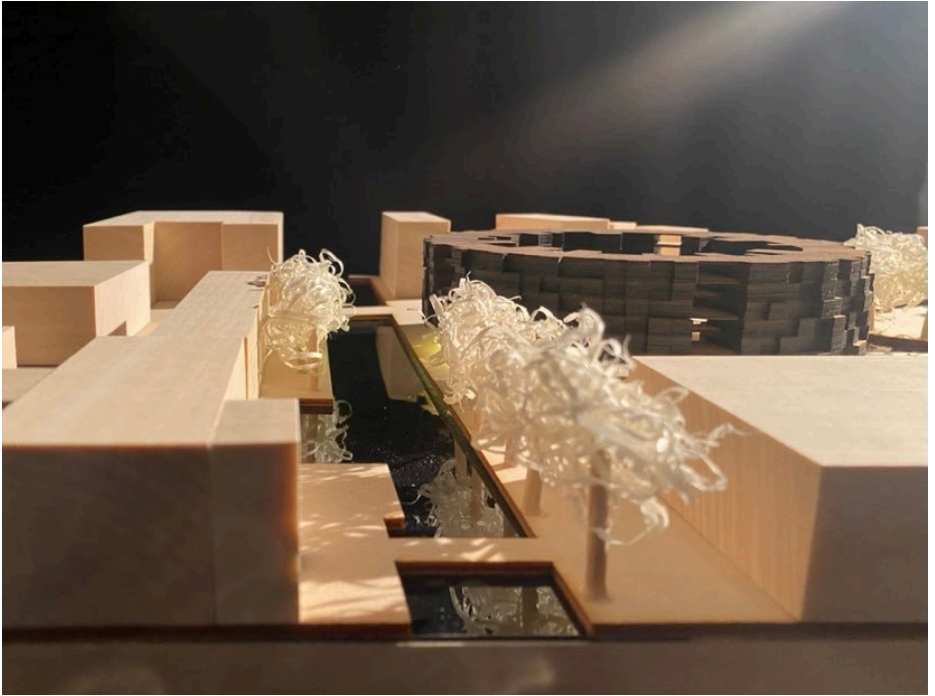
The concept model showcase the spatial distribution of public, private and the inbetween space in relation to form. Alterations of the form create different levels of spatial separation.

▪



MAIN MODEL 1:500





DETAIL MODEL 1:20





SOURCES

ArchDaily (07.02.2014) Tietgen Dormitory / Lundgaard & Tranberg Architects" <https://www.archdaily.com/474237/tietgen-dormitory-lundgaard-and-tranberg-architects> [Accessed 3 February 2022]

archguide+ (11.12.2012) "Studentenwohnheim Tietgenkollegiet in København" <https://www.arcguide.de/projekte/wohnungsbau/studentenwohnheim-tietgenkollegiet-in-kopenhagen/> [Accessed 3 February 2022]

da.wikipedia.org. Lene Tranberg. Wikipedia.
https://da.wikipedia.org/wiki/Lene_Tranberg [Accessed 3 February 2022]

Lundgaard Tranberg Arkitekter. About. LT Arkitekter. <https://www.ltar-kitekter.dk/about-en> [Accessed 3 February 2022]

Tietgenkollegiet: <http://tietgenkollegiet.dk/en/> [Accessed 3 February 2022]

Tranberg, Lene (14.06.2013) "12 x NOBEL: Lundgaard & Tranberg Arkitekter" https://www.youtube.com/watch?v=g9Vi_6ysiiE&t=14s

ARK079
Nordic Architecture 2022

Group 4
Amanda Ulvestig
Dario Erioli
Kajsa Rosenlund Lindvall
Nerma Ceric
Sara Bergman
Saskia Langbein