

**NORDIC**  
**ARCHITECTURE**  
NORDIC WOMEN

**DOCKUMS**  
KARI NISSEN BRODTKOPB

1	ARCHITECT	5
2	SITE AND CONCEPT	9
3	DRAWINGS	15
4	COURTYARD AND PUBLIC SPACES	23
5	THE ELEMENTS	29
6	MODEL	33

1 ARCHITECT

## KARI NISSEN BRODTKORB

### DANCER, BODY INTELLIGENCE

It is no coincidence that she looks and behaves like a dancer.

"Physical intelligence, she calls it. If you want to understand the room, know the room, you have to know your own body. Only then can you create good rooms for others."

### STEEL, INDUSTRIAL, TRANSFORMATION

"I like steel the best."

Steel is her favorite material. The lightness, strength and expressiveness, she explains. "To take care of the original, rough, industrial expression, and at the same time scale down the buildings so that they become a good place to live, is what I strive for."

### DE-FRAGMENTATION

The latter has become one of her trademarks. De-fragmentation, she called it ten years ago. Now she would rather call it decomposition.

We know that we humans thrive best in small, intimate rooms. The buildings and the spaces between them, the transition zones, are equally important. The light and the sun must escape, and we must not forget the shadows. Without shadows, the form disappears.



"From the 1980s, women conquer their place in architectural history",

Leading among these conquerors is the Bærum architect Kari Nissen Brodtkorb (62) with her office at Grini Mølle. She has designed lots of well-known residential areas for capital-intensive clients such as Smestad main farm, Prinsessealleen and not least Stranden on Aker Brygge. She awarded the Steel Construction Award, for "outstanding utilization of steel's properties and opportunities as a building material".

"She has to a large extent been a role model for young women professionals, while her work has contributed to increasing respect for female architects".



## 2 SITE AND CONCEPT

## DOCKUMS, OFFICE BUILDING. MALMÖ, 2010

Right by the old Dock in Malmö, Region Skåne has got an office building.

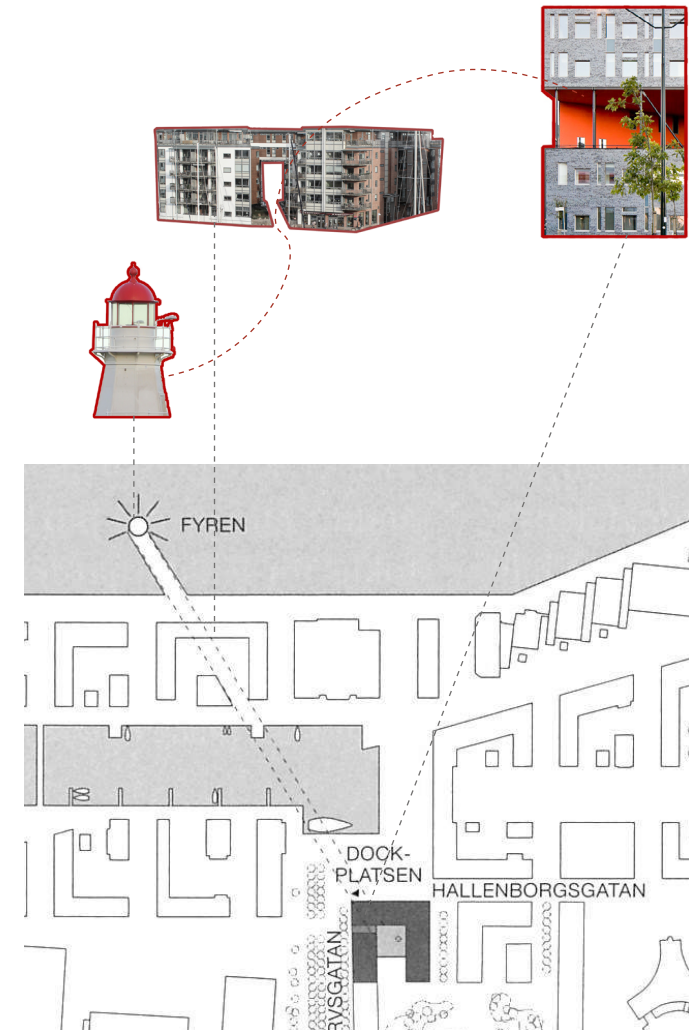


Picture on website

Architect: Arkitektkontoret Kari Nissen Brodtkorb AS  
Built in: 2008-2010  
Total Area: 15682m<sup>2</sup> (+5574m<sup>2</sup> in the basement)  
Height: 25.7m

The new building was to interact with the surrounding buildings. These have a horizontal alignment in the facade expression and protrusions on the corners, which gives the building its direction and dynamism. To stabilize the "space", the new quarter has been designed with a more direction-neutral expression. The materials and colours were adapted from the surrounding. The slated outdoor floor has a pattern inspired by the facades' window installation. Between the slate slabs there are wide joints with moss and sedum plants. The courtyard, which is located on the terrace floor, is a meeting place with standing tables and seats in the sun.

## SIGHT THROUGH THE BUILDING TO THE LIGHTHOUSE

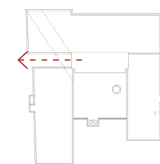


SITUATION PLAN | SCALE 1:4000



Taken by Jin

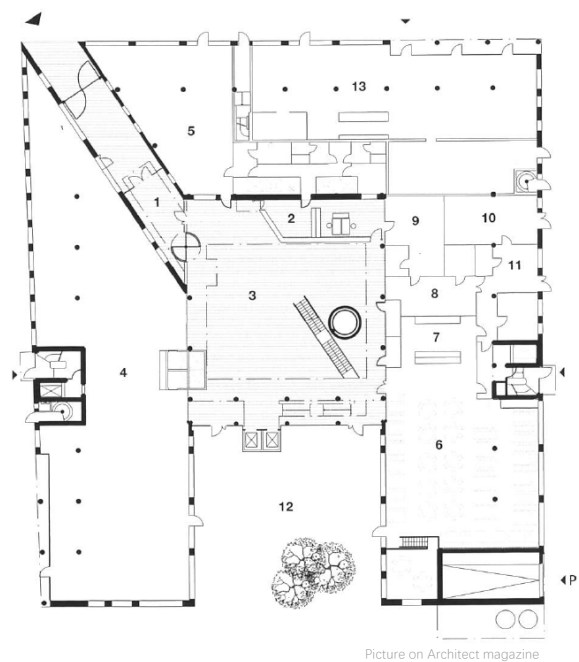
SIGHT LINE TO THE LIGHTHOUSE | PHOTOGRAPH



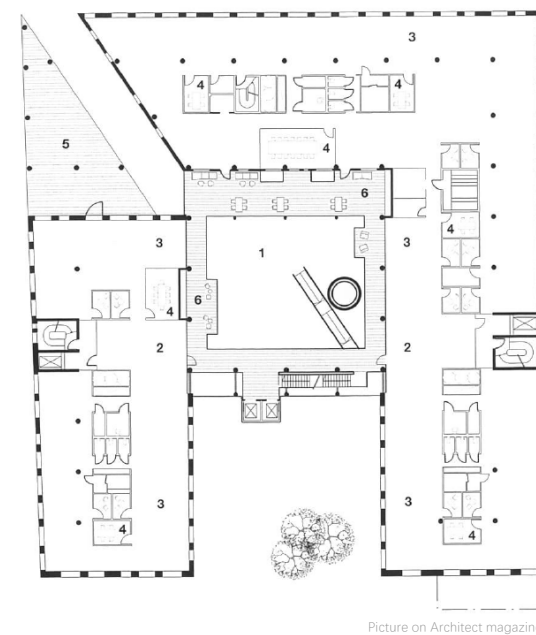
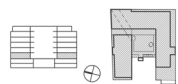
Picture on website

SIGHT LINE ALONG THE STREET TO THE SEA | PHOTOGRAPH

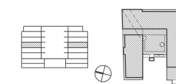
3 DRAWINGS

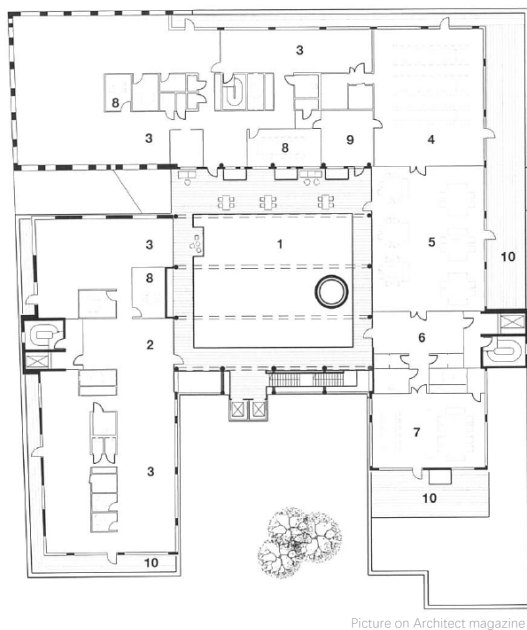


FLOOR PLAN 1 | SCALE 1:800

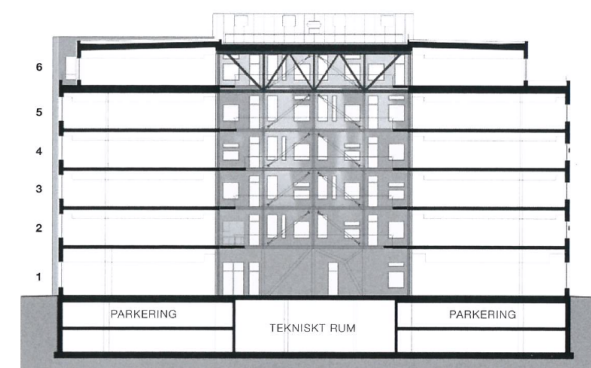
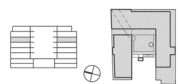


FLOOR PLAN 3 | SCALE 1:800

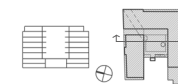




FLOOR PLAN 6 | SCALE 1:800



SECTION | SCALE 1:800

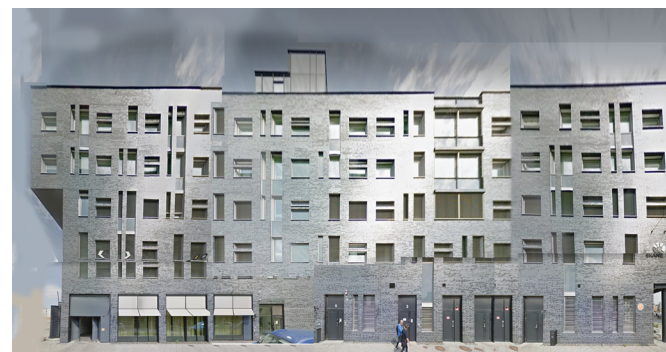






Picture on website

NORTH ELEVATION | PHOTOGRAPH



SOUTH ELEVATION | COLLAGE



Picture on website

WEST ELEVATION | PHOTOGRAPH



Picture on website

EAST ELEVATION | PHOTOGRAPH

## 4 COURTYARD AND PUBLIC SPACES



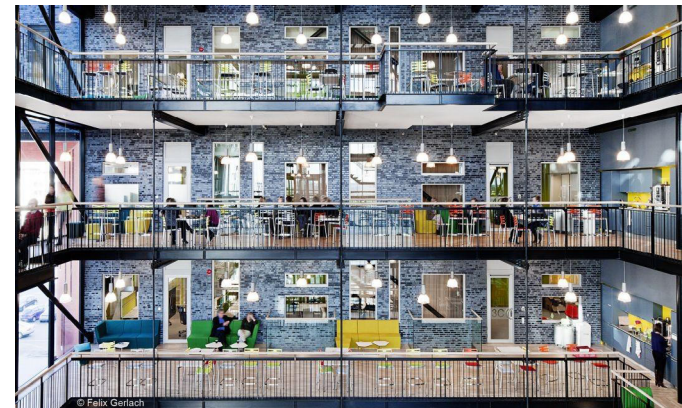
## COURTYARD



Picture on website

The office wing is laid around a common central room; The "heart" in the quarter. The central room connects the floors both functionally and visually and enables both flexible access to and division of the office premises.

## CORRIDOR



Picture on website

Corridors surround the courtyard. There are many different protruding balconies in the corridor that can be used as leisure space, sofas and seats are also arranged in the corridor, which also serves as a public kitchen and dining room for employees.

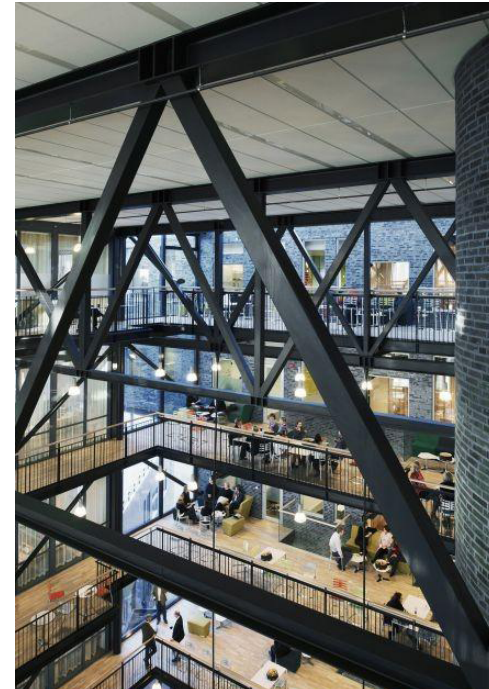
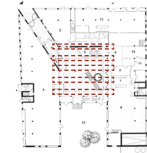
## ENTRANCE



Picture on website

The broken corner of the entrance provides space for a terrace on the second floor. The facade is very clean and the entrance is narrow and unwelcoming to visitors, but protects the works from the elements. It creates a good sight line from the atrium to the lighthouse.

## STEEL TRUSS



Picture on website

The steel trusses carrying the roof is very industrial and gives a very light feeling. They create a more closed-in feeling to the whole balcony on the top floor. The beams are mostly carrying the roof, but one of them are holding up the fences above the reception with thin metal rods.

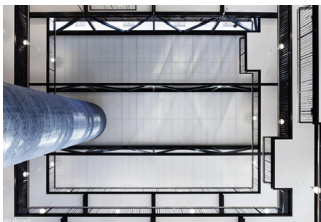
## 5 THE ELEMENTS

## MATERIAL

Brick and steel are the main materials and is connected to the industrial history of the area's old shipyard.



Brick



Steel

## DETAIL

### STRUCTURE NODE

Steel structure nodes inside the building can be seen everywhere. Steel is Nissen Brodtkorb favorite material. Each connection is designed to be very small and delicate, making the whole steel structure look very light.



Taken by Jin

## DETAIL

### FENCE

The fences are in blackened steel and had a very industrial look, and are connected with wooden poles that acts as a handrail. These materials gives the whole fence a very industrial-scandinavian look which fits very well into the area.



### TABLE BOARD

A long table board is attached to the railing of the corridor around the atrium of the building, surrounded by high stools. The board can be used to store books, coffee mugs et.c., and can be used as a small space for conversation and relaxation.



### STAIR

The stairs are made with the same material and style as the fences, and the wooden poles connects seamlessly from floor to floor like a wooden line going through the building. A second handrail of steel is fastened lower down.



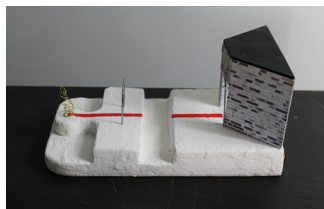
Taken by Jin

6 MODEL



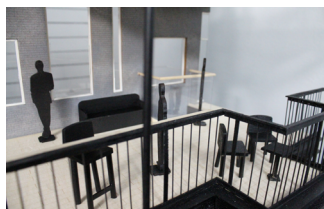
## CONCEPT MODEL

We wanted to present the "sightline" of this office building design in our model, which was a focus point of the architects who drew the house. The sightline shows the relationship between our building, the apartment building with the hollow space in the middle and the lighthouse.



## DETAIL MODEL | 1:20

We chose to show the corridor around the atrium in our detail, which includes the main steel structure of the building, the inner façade composed of bricks, the protruding balcony, and the main public space to show the activities of the employees.



## MAIN MODEL | 1:100

The main model is cut into two sections, one main part where we show the main courtyard and public space corridor of the building, as well as the main steel structure and the broken entrance corner, and another which completes the facade and inner walls



## GROUP 6

Axel Jakobsson Olsson

Ebba Nordberg

Jin Qian

Lisa Johansson

Malin Petersson