

NORDIC
ARCHITECTURE
NORDIC WOMEN

TILA HOUSING
PIA ILONEN

ARCHITECT	5
BUILDING	6
DRAWINGS	10
MODELS	16

THE ARCHITECT

PIA ILONEN 1957-

Pia is a Finnish architect who founded the office Alli, later Talli, with partners Minna Lukander and Martti Lukander for the restoration design of the Lasipalatsi -building in 1995. This modernistic glass palace was lost in transition bureaucracy, until at last it was saved and restored. After a period from 1989 Talli continued with another forgotten building, the Cable Factory. The office has since carried out renovations and alterations of many high-profile public buildings, e.g. Alvar Aalto's Finlandia Hall. The experiences of working with factories together with a personal search for the perfect adaptable apartment and influences from the Netherlands became the start of raw space housing concept, Tila. The ever since, developed, user-centered and radical thinking is defining the way the architects work in ILO, which Pia founded in 2019 together with her long-standing co-workers.

" I develop design tasks myself. They have to feel significant to me and to be on my own terms."

P. 70, E. Koivisto, Arkkitehti 2/2017



TILA HOUSING

TALLI ARCHITECTURE DESIGN

A case study house questioning high-rise building blocks and the lack of adaptability to changing living situations within a building.

Pia is reexamining norms and standards and conventional architectural practice by creating in an open building and DIY philosophy. One aim was to create loft-living with "maximum space and minimum cost"

Tila consists of 39 flats which were equipped with the bare minimum: a bathroom.

ILO architects created the frame and the infill was made by the residents, something Pia describes as different chapters in the process. The infill is adaptable to future changes of the

CONSTRUCTION YEAR:	2011
LOCATION:	ARABIANRANTA
CLIENT:	SATO OY
UNITS:	39 pcs
TOTAL AREA:	4352 M2
EXHIBITIONS:	VENICE BIENNALE
PUBLISHED:	ARCHITECTURAL REVIEW 4/11 BAUWELT 18/2016.



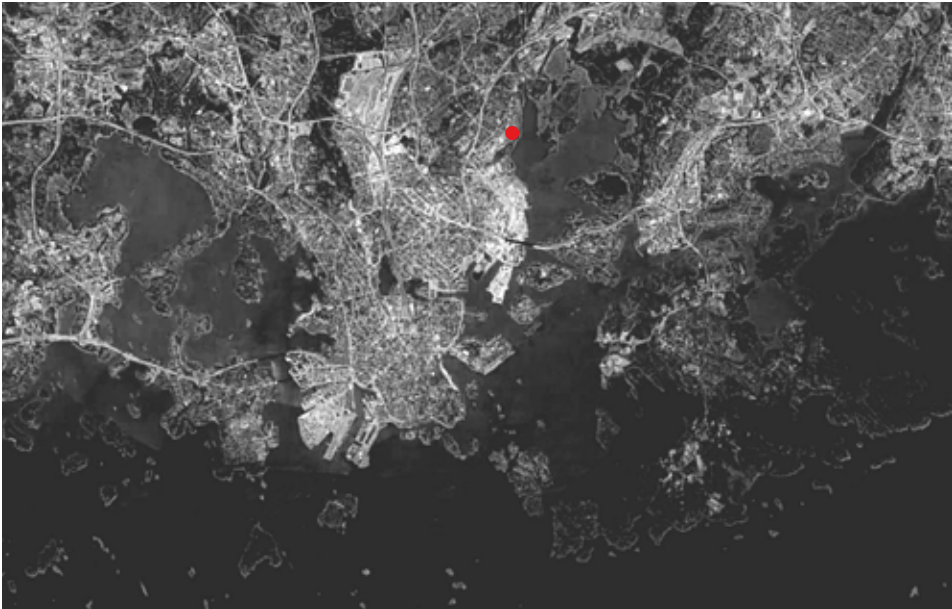
THE RAW SPACE

SHORT INTRODUCTION TEXT

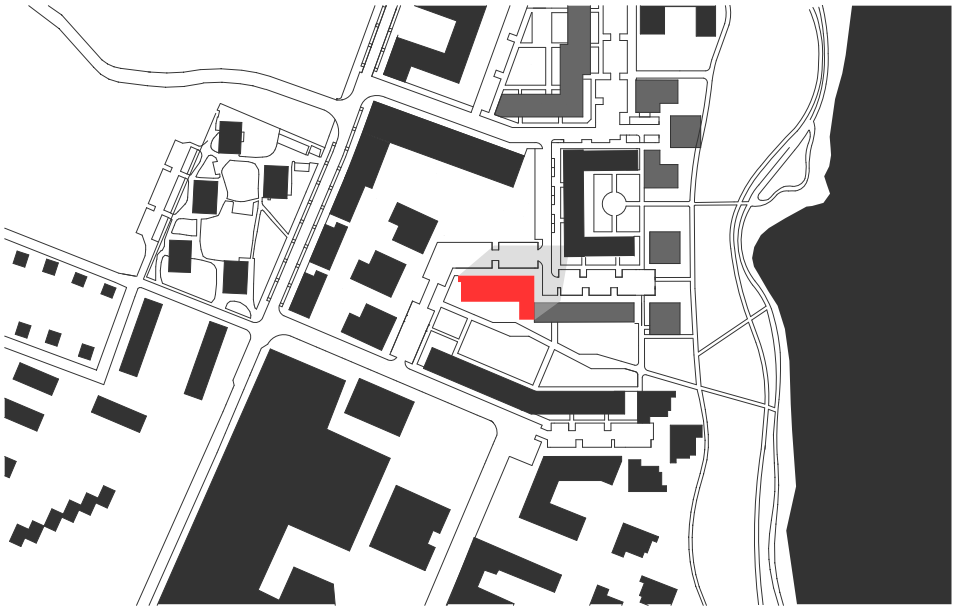
The units have measurements of 11,4×8,9×5m or half of it. Apart from a wet room the residents can design the interior however they want, within the limits of the Finnish law. The units have one closed and one open side, designed with the possibility of dividing the glazed walls in many ways. When the frame was finished there was a briefing and series of communication between the architect and the residents. Floor plans were painted onto the floor of the raw space and the residents simultaneously started their DIY projects. This collective experience created a sense of community within the building, at the same time every household has its unique home.



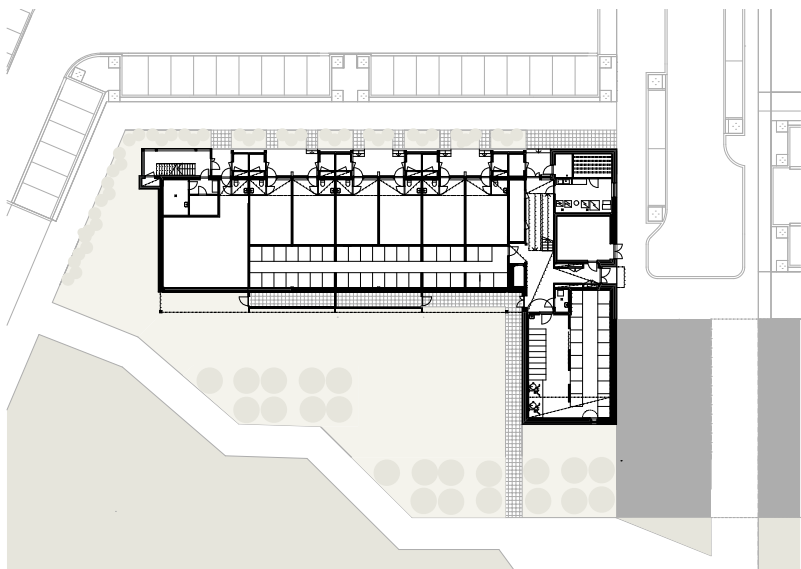
THE SURROUNDING



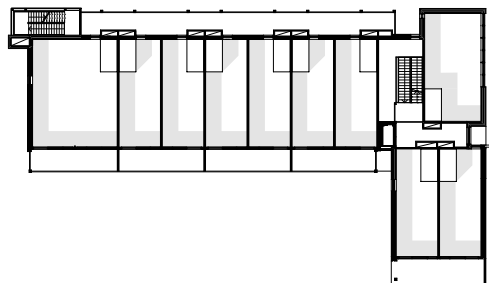
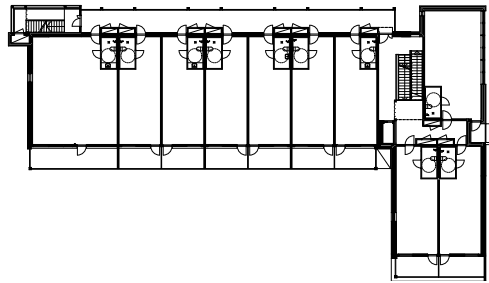
MAP OF HELSINKI



FLOOR PLANS



GROUND LEVEL



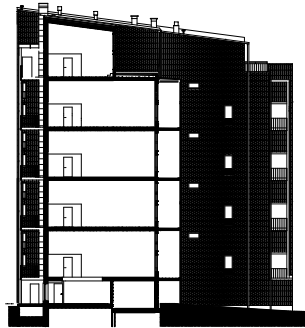
FACADE/SECTIONS



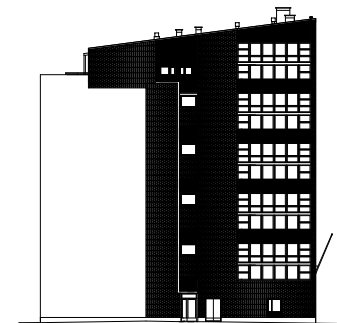
84. ja 84B, 1:200



84. ja 84B, 1:200



10A_04 x A_1-200



10A_04 x A_1-200

CONCEPT MODEL

NO SCALE

This model expresses the playfulness and gamification of the experience of buying an apartment in Tila Housing. The user can add, remove and move objects within a strict framework. Like the original building, it is made of a basic, industrial material, plywood. The base is made by CNC-milling, the connectors are put together with products off-the-shelf and the objects are individually created by hand. This contrast can be seen as a methafor for the separation between the work of the architect and the residents.

MAIN MODEL

1:25

This model is a tool to experience and express the user agency of Tila housing. To put it in Pia's terms: The first chapter is the intentionally raw and empty box. The second chapter is the individual adaptation of the interior. The third is the documentation of the exhibition user. The fourth is the sharing of this experience. The model is made by a mixture of digital and manual fabrication such as laser cutting, 3d-printing, sawing and sanding. This gives an echo of the rational, functionalistic (and nordic?) expression of the original building.

DETAIL MODEL

1:200

Multiple units are organized in a system. This shift between part and whole is displayed in this interactive model as well as the separation between public and private space. The shift between the individual space and the collective frame creates an interesting tension and complexity in all residential areas. One could argue that by exaggerating the freedom within and the collective process of building the interior simultaneously, Tila housing accentuates what life in an apartment building is. The model is made by laser cut cardboard, recalling the structure of the original building.

REFERENCES

Architonic (year unknown) About Talli architecture design, collected 220202,
<https://www.architonic.com/en/microsite/talli-architecture-and-design/5209620>

Biennale de Arquitectura (2018) Talli Architecture Design, collected 220202,
<https://www.labiennale.org/en/architecture/2018/participants/talli-architecture-and-design>

Biennale Architettura - Meetings on Architecture 07 (2018) Communicating architecture, collected 220120,
<https://www.youtube.com/watch?v=Wk44swoNdY8>

E. Koivisto, Arkkitehti 2/2017

E. Oikarinen, Frames for freedom, Finnish architectural review, 4/2021

ILO
<https://www.iloark.fi/>

Talli
<https://www.talli.fi/en>

IMAGES

Tila housing block, Talli Architecture design, collected 220202,
<https://www.talli.fi/en/projects/loft-building-tila-housing-block>

Info, ILO, collected 220202,
<https://www.iloark.fi/henkilot/>

SHAMS AL-AZZAWE
TOMAS JOHANSSON
MALOU LUNDQVIST
FENJA SCHWARZTRAUBER
ALICE WINK

