

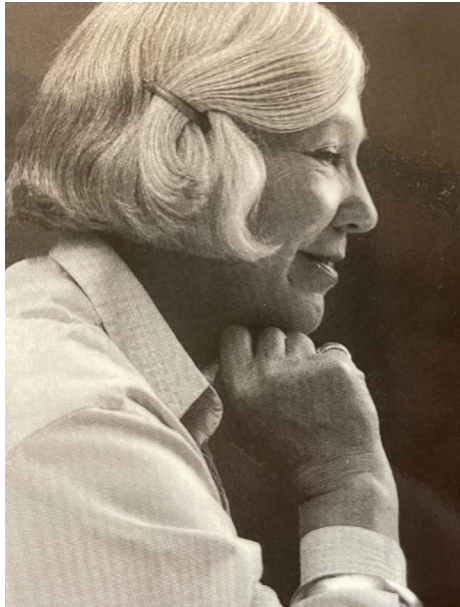
**NORDIC
ARCHITECTURE
NORDIC WOMEN**

VILLA KJAERHOLM

HANNE KJAERHOLM

ARCHITECT	4
BUILDING	6
DRAWINGS	10
CONCEPT	16

HANNE KJAERHOLM



THE ARCHITECT

The danish architect Hanne Kjærholm was born 1930 in Hjørring, Denmark, and studied architecture at the Royal danish academy of fine arts. 30 years later, Hanne was the first woman to be appointed professor at the academy.

The architect did more than 20 projects in total during her career and kept the focus on designing villas in the countryside. She also designed a couple of museums, an art exhibition building and her own home – *Villa Kjærholm*



POUL KJAERHOLM

THE DESIGNER

Poul Kjærholm was born 1929 in Østervrå and married Hanne Kaerholm during his study period at the Danish school of arts and crafts. He had a special interest in furniture design and started a collaboration with the danish furniture manufacturer *Ejvind Kold Christensen* in 1955, and continued the collaboration until his death 1980.

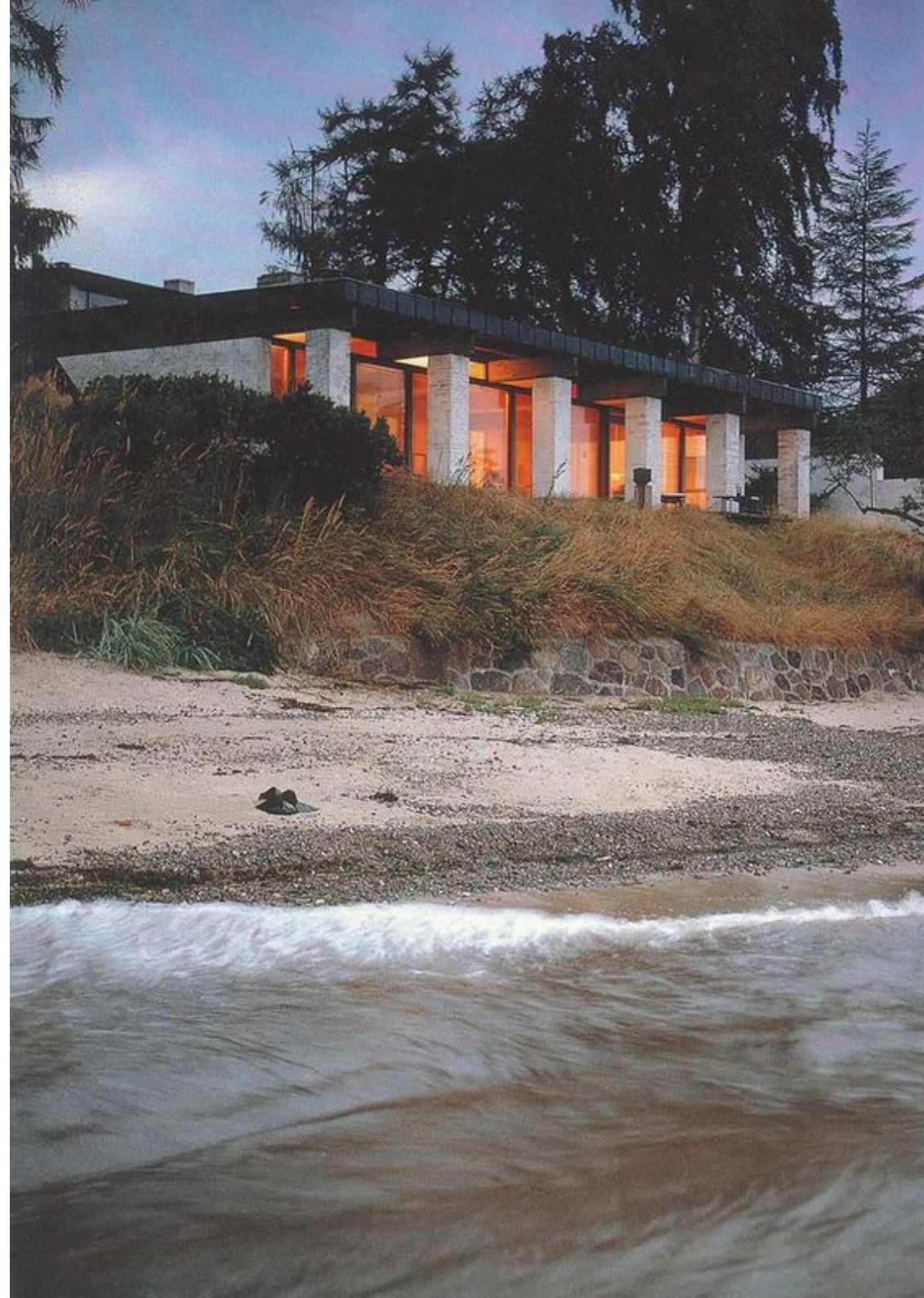


VILLA KJAERHOLM

Villa Kjaerholm was built in 1962 at Rungstedt coast in Denmark. The building is Hanne's second project in her career and is a 145 sqm villa with a visible construction and a simple, minimalistic design of wood and bricks. The interior is created by her husband Poul, who made all furniture especially designed for their home. The house was inspired by a pergola and the Japanese concept of *"borrowing the landscape"*. Hanne wanted the combination of open facades, closeness to the sea and the green surroundings to create a *"zen"* vibe in the house.

MATERIAL

The building is constructed with stained wood and white painted bricks that is visible through the inside and outside. The contrast between warm and cold material creates a balance and a minimalistic atmosphere in the house. The flat roof has an edge of oxidized copper and an upper side made of sedum that ties the building together with the surrounding greenery.



VILLA KJAERHOLM

VILLA KJAERHOLM – GROUP 8



VIEW OVER THE SEA
FROM THE LIVING ROOM



EXTERIOR
INSPIRATION TO DETAIL



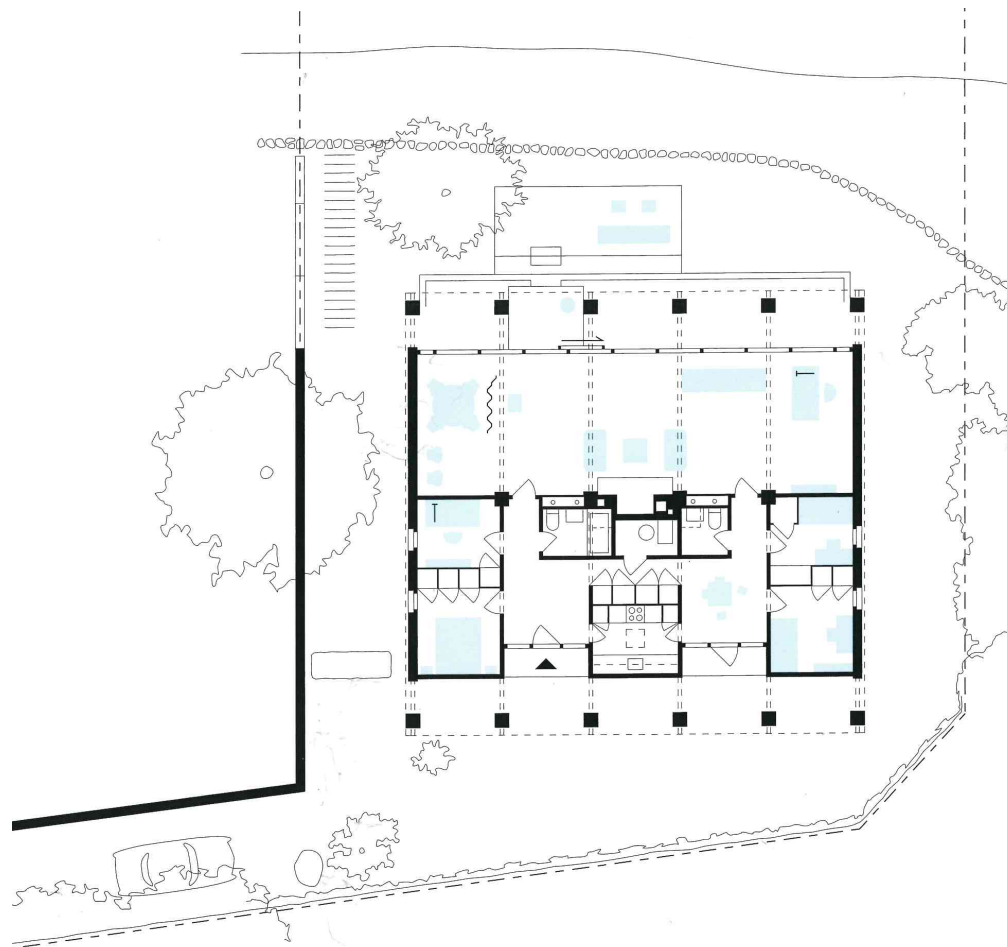
INTERIOR



EXTERIOR
FROM THE DRIVEWAY

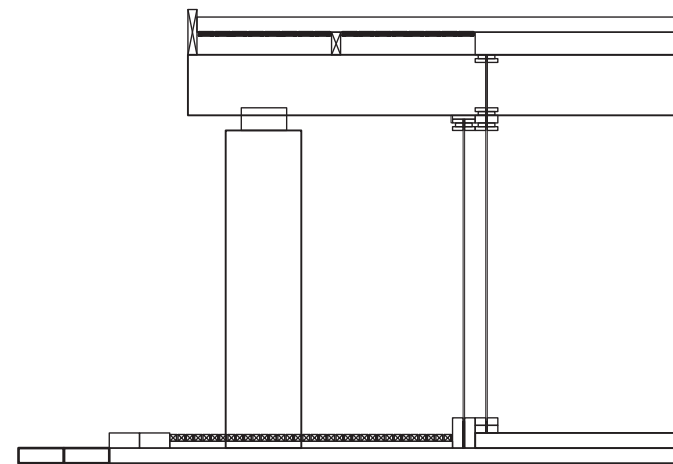
CONTEXT

📍 PINIEHØJ 20, RUNGSTED KYST



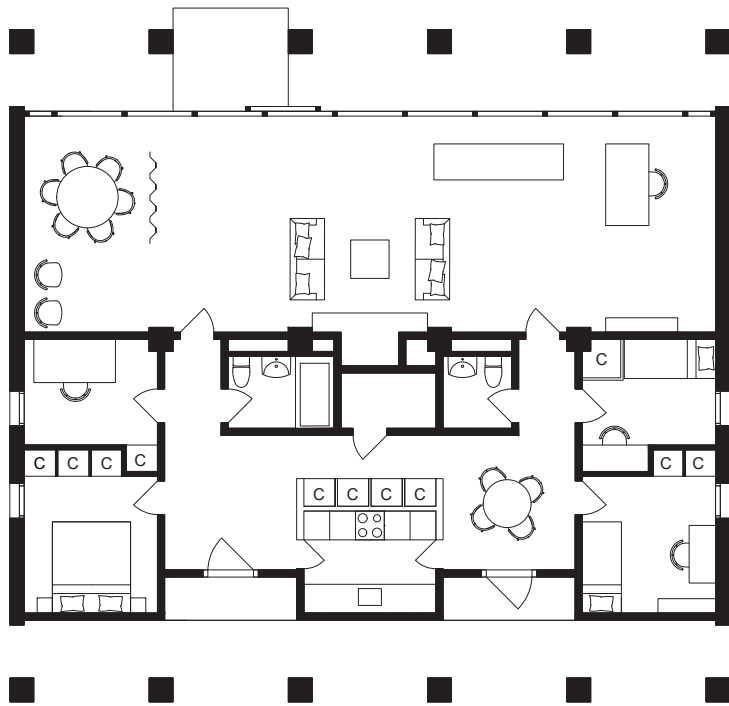
SITE PLAN 1:250

The house has two entrances to the west that are separated by a small kitchen, the master and children's bedrooms are separated by the kitchen, two toilets and a furnace room in the core of the building. This represents the closed, compact zone and is strictly following the beam and pillar system in the villa. Towards east there is a large 15m long common living room that has a dining area to the north, a living room with a fireplace in the middle and a working space to the south. The living room is the most open and multifunctional space in the house that sets the "zen" atmosphere Hanne wanted to create. The grid of the house makes the placements of the walls into a symmetrical pattern that clearly shows the contrast between the compact core and the open living room towards the sea.



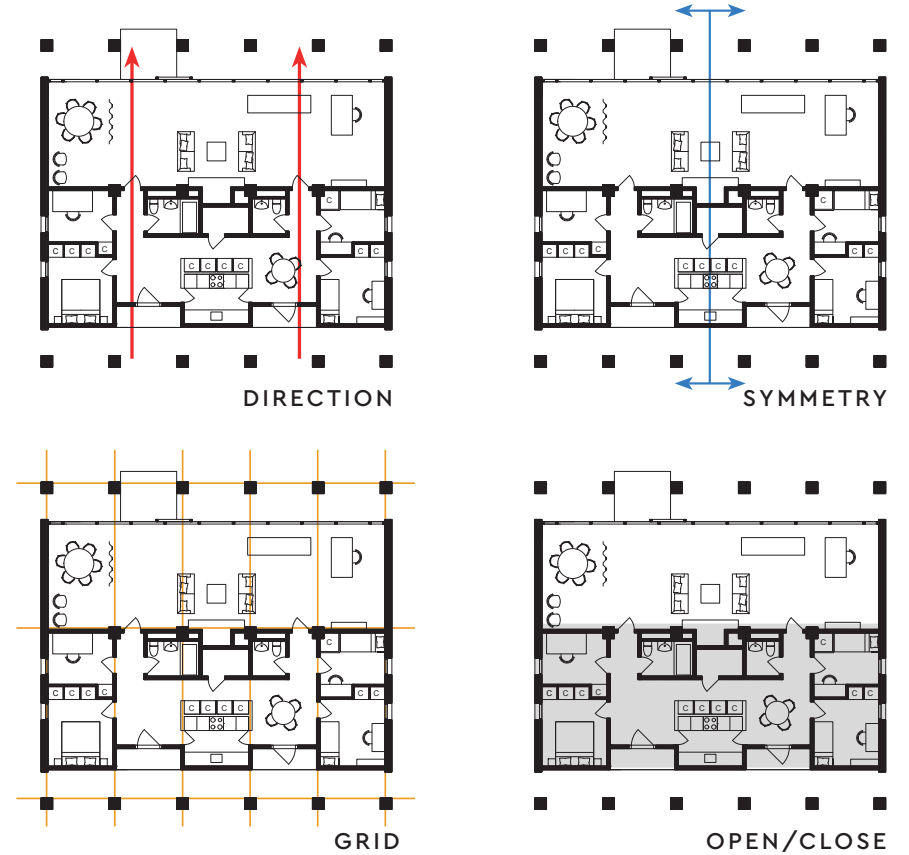
DETAIL SECTION 1:50

PLAN

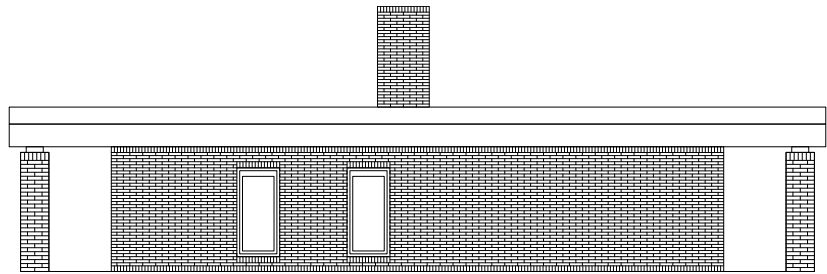


PLAN 1:150

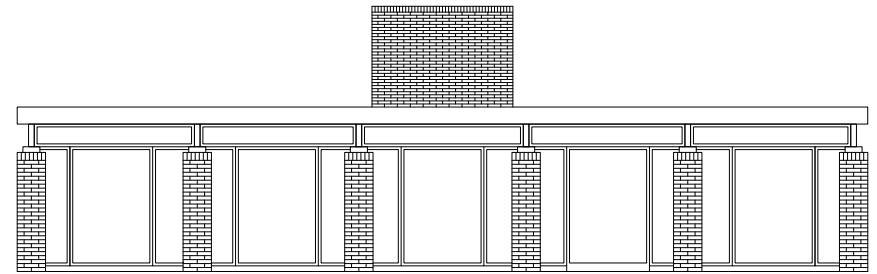
PLAN ANALYSIS



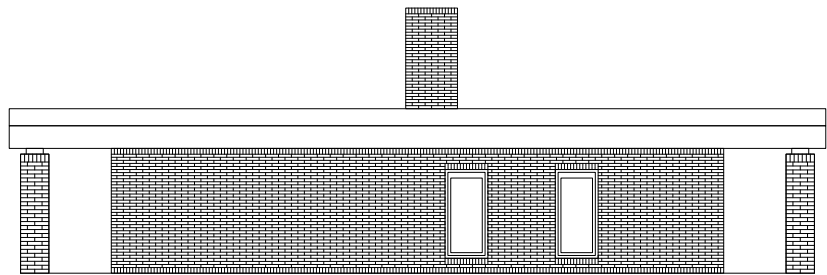
ELEVATIONS



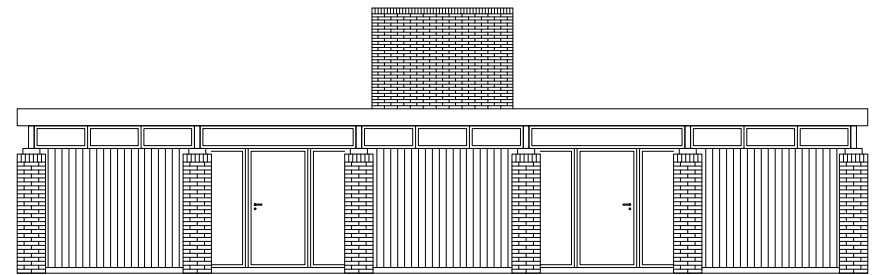
NORTH 1:150



EAST 1:150



SOUTH 1:150



WEST 1:150

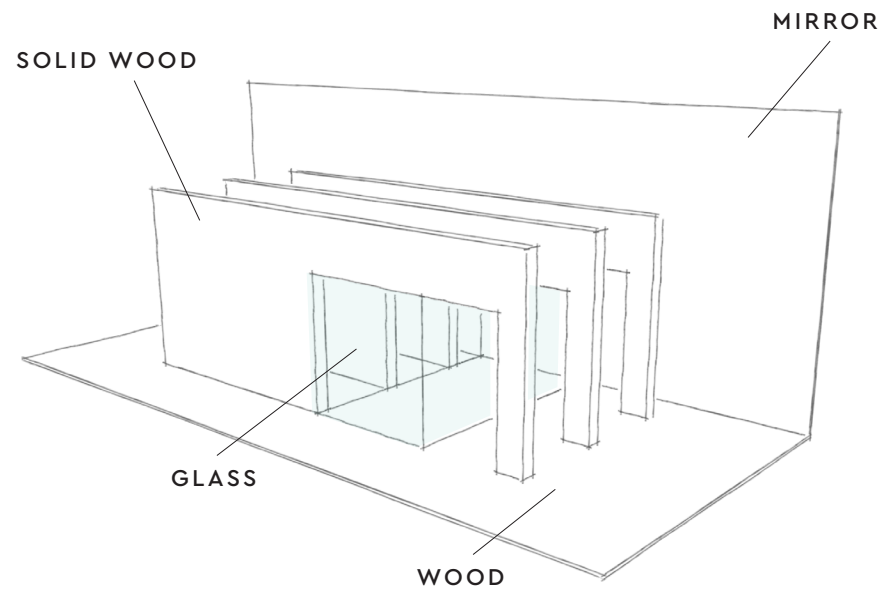
CONCEPT

DIRECTION

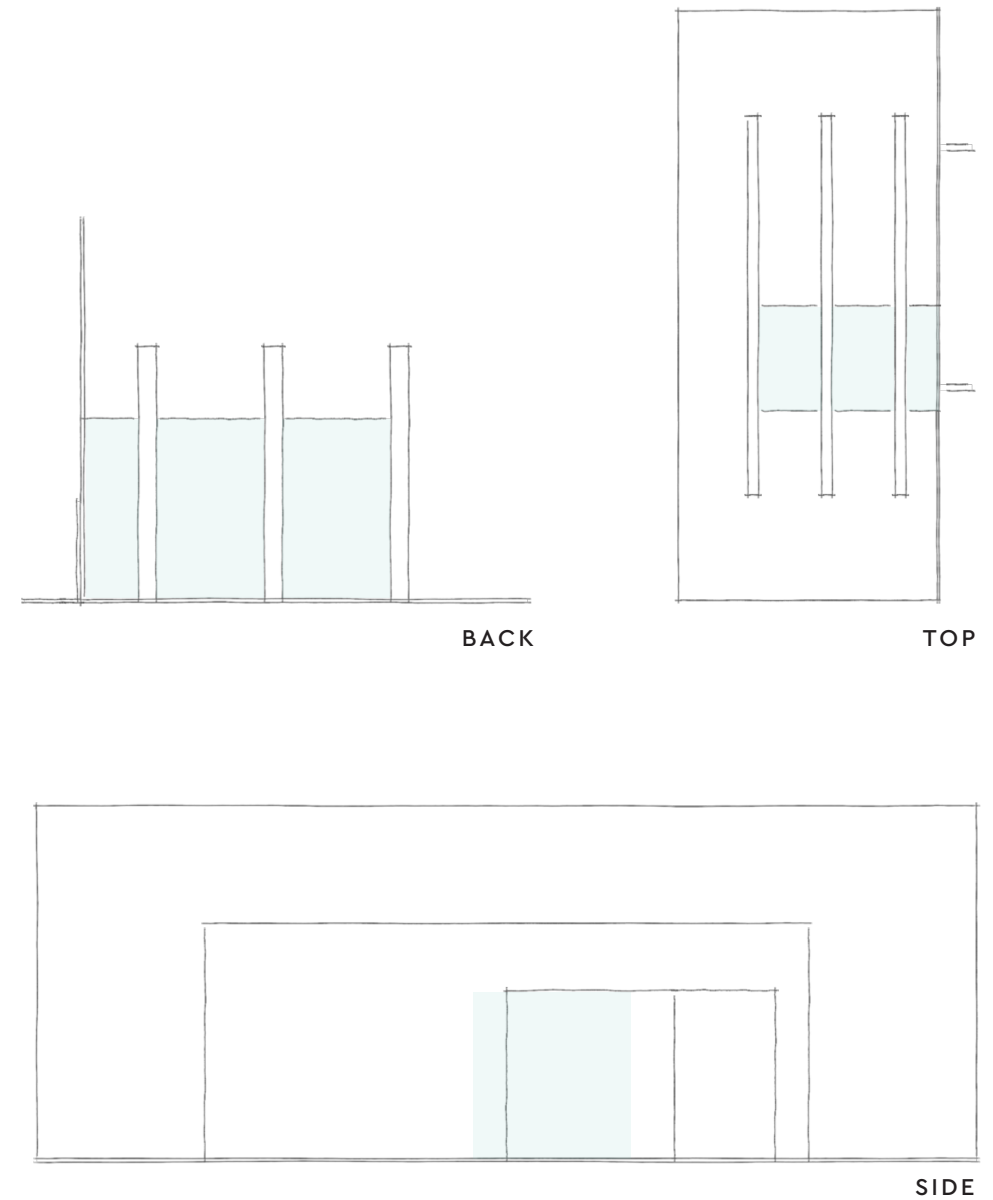
SYMMETRY

GRID

OPEN/CLOSE



CONCEPT VIEWS



Villa Kjaerholm is a perfect
example of a minimalist home in
the 1960 . It's timeless, simple and
built with materials that age with
grace until this day.

GROUP 8

ELLEN BENSKÖLD
AMELIA BERGLUND
NATALIE ISAKSSON
MARTIN SKREDSVIK
BEATRICE WALLÉN

