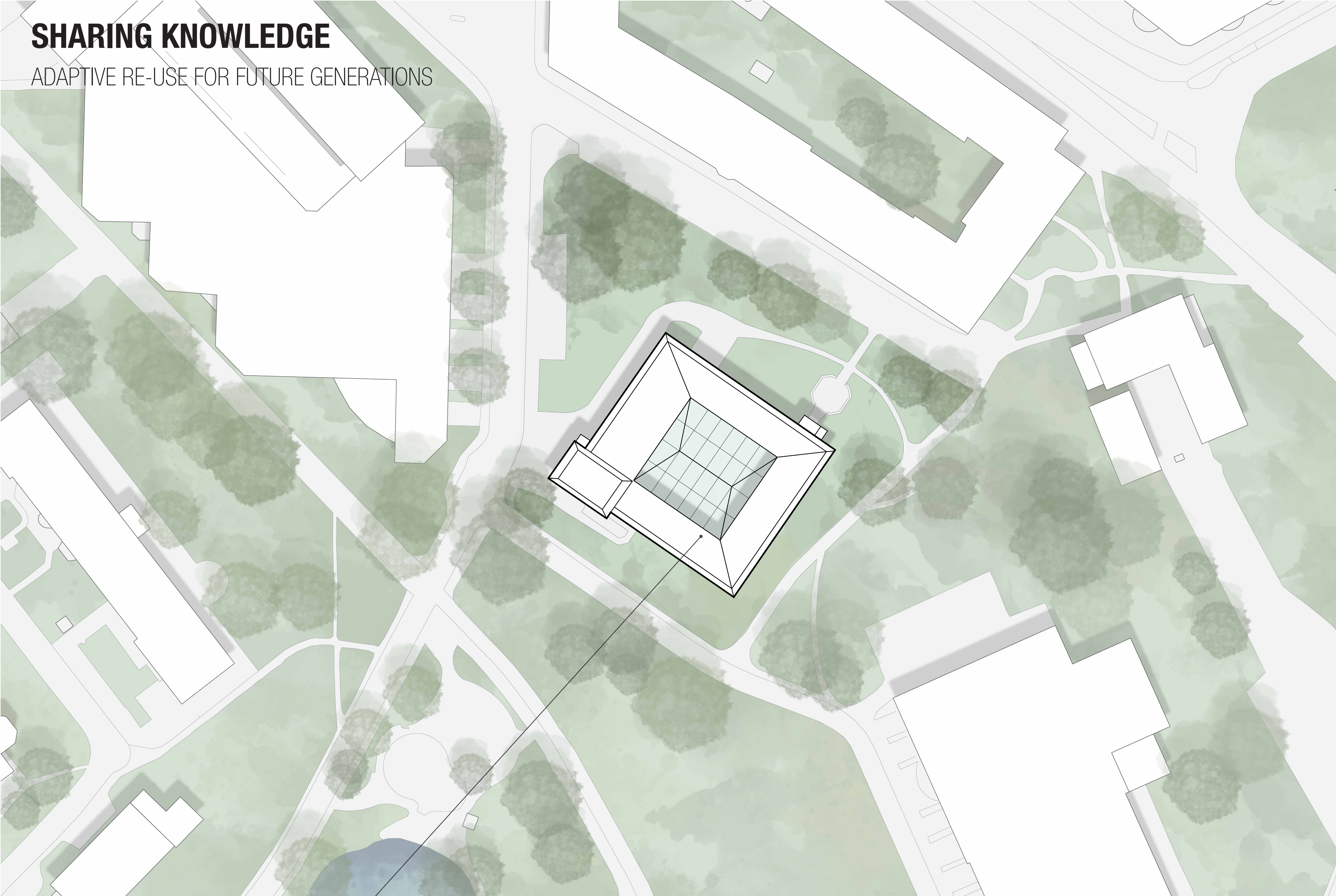
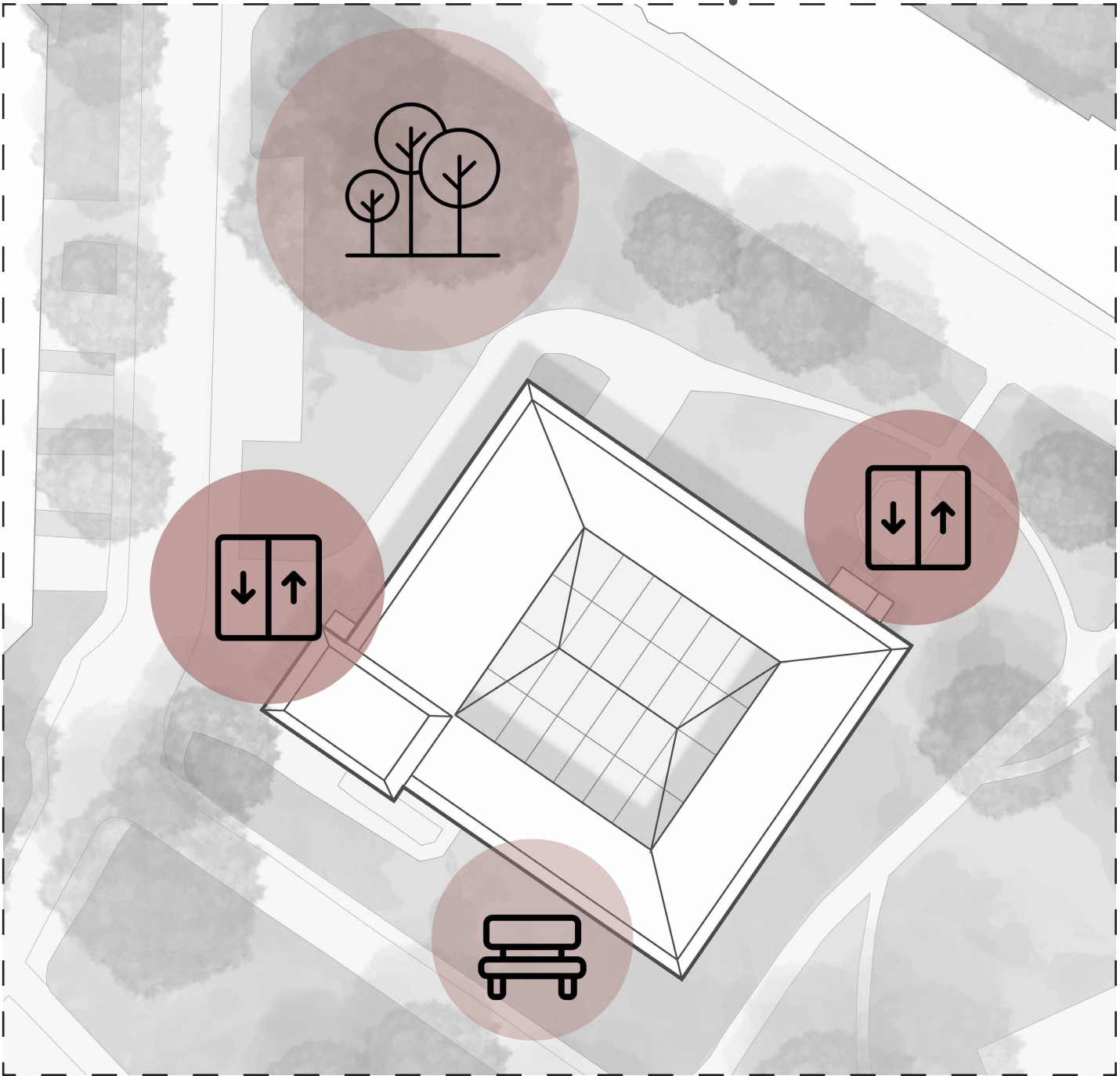


# SHARING KNOWLEDGE

ADAPTIVE RE-USE FOR FUTURE GENERATIONS

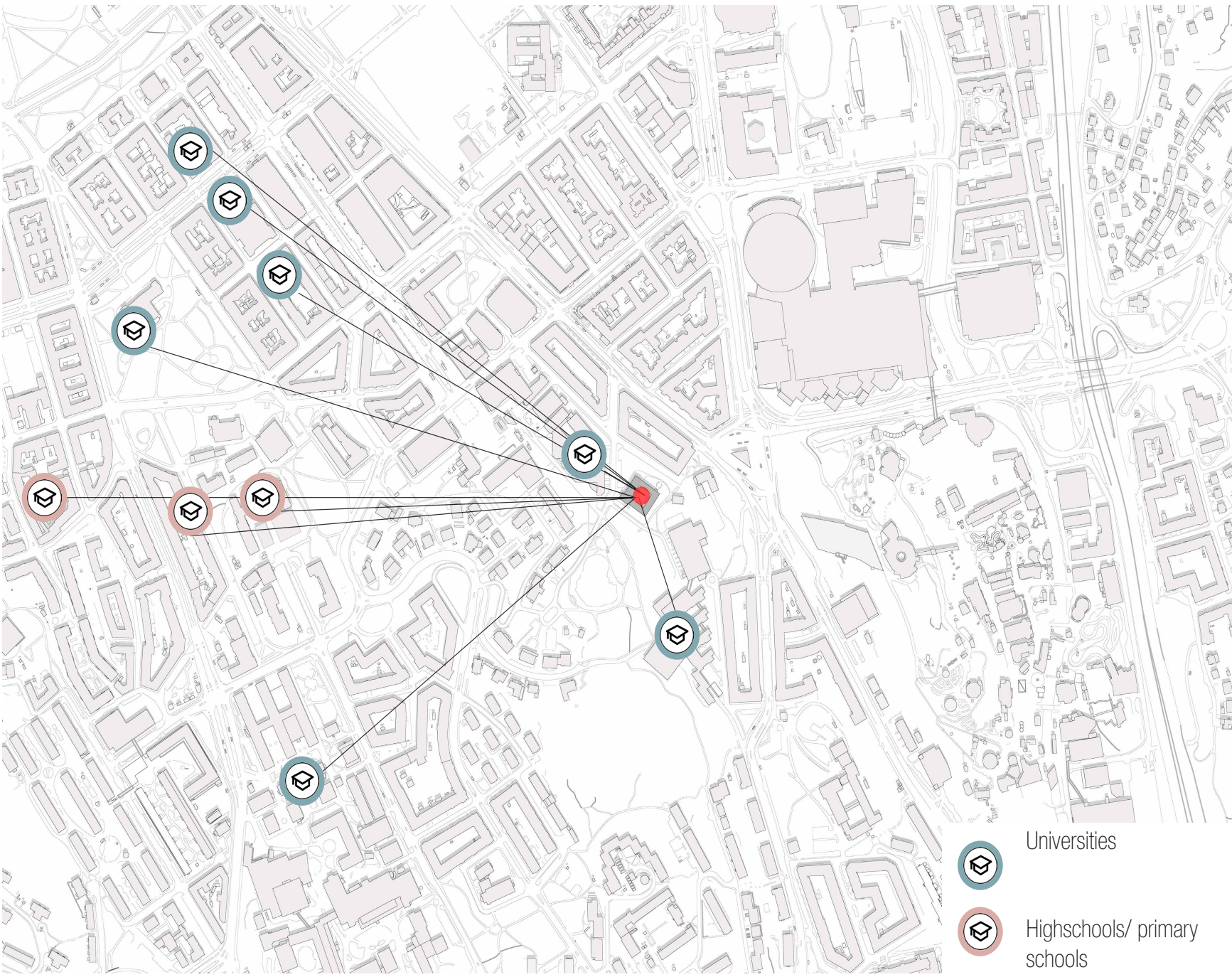


⌚ SITE PLAN - SCALE 1:500

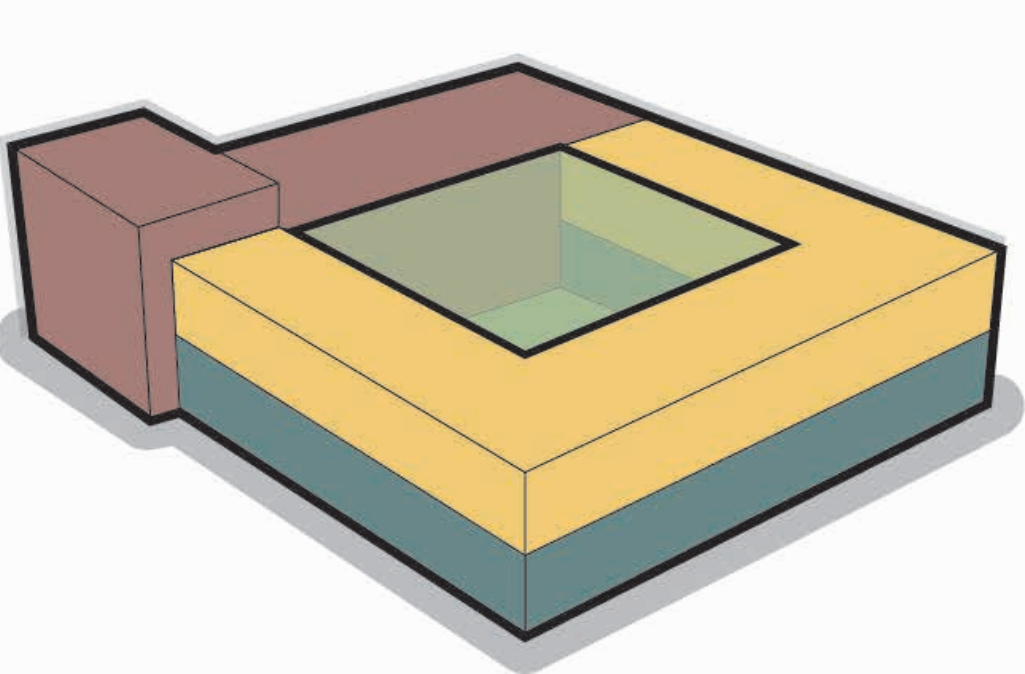
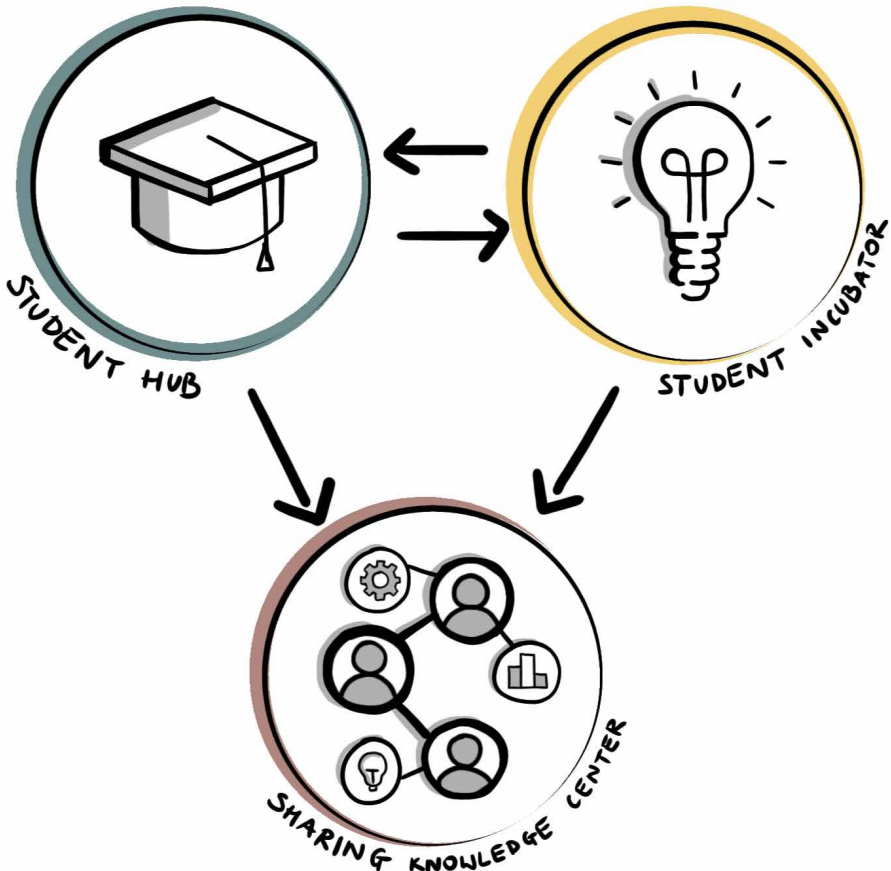


The courthouse was built in 1948 for the Court of Appeal for West Sweden in Gothenburg and till 1994 was a place for the Court of Appeal for West Sweden. After that time that building was used for education purposes as a part of Gothenburg University but in 2020 the academic department left the building. Courthouse is now in lack of interest in any other university and is staying empty. The main focus of our project was the aspect of preservation of the cultural heritage in relation to new quality of the spaces and new possibilities for future users. The functions that we've proposed are focusing on students and their development. We named the building - "Center of Knowledge", as the main goal of that space is collaboration and sharing knowledge between students but also to inspire younger generations.

After analyzing the movement of people in the area near the building, we pointed out 4 zones for potential changes that we see as the most important. One of our proposals is to add urban furniture in the south facade so as to create a great space to sit and therefore encourage people to come closer to the building. After organizing the north corner with paths and benches, that space will gain a park character and will be more connected to Renström. The entrances of the building are also zones of intervention for this project as we see a problem of accessibility and visibility.



⌚ MAPPING EDUCATIONAL BUILDINGS



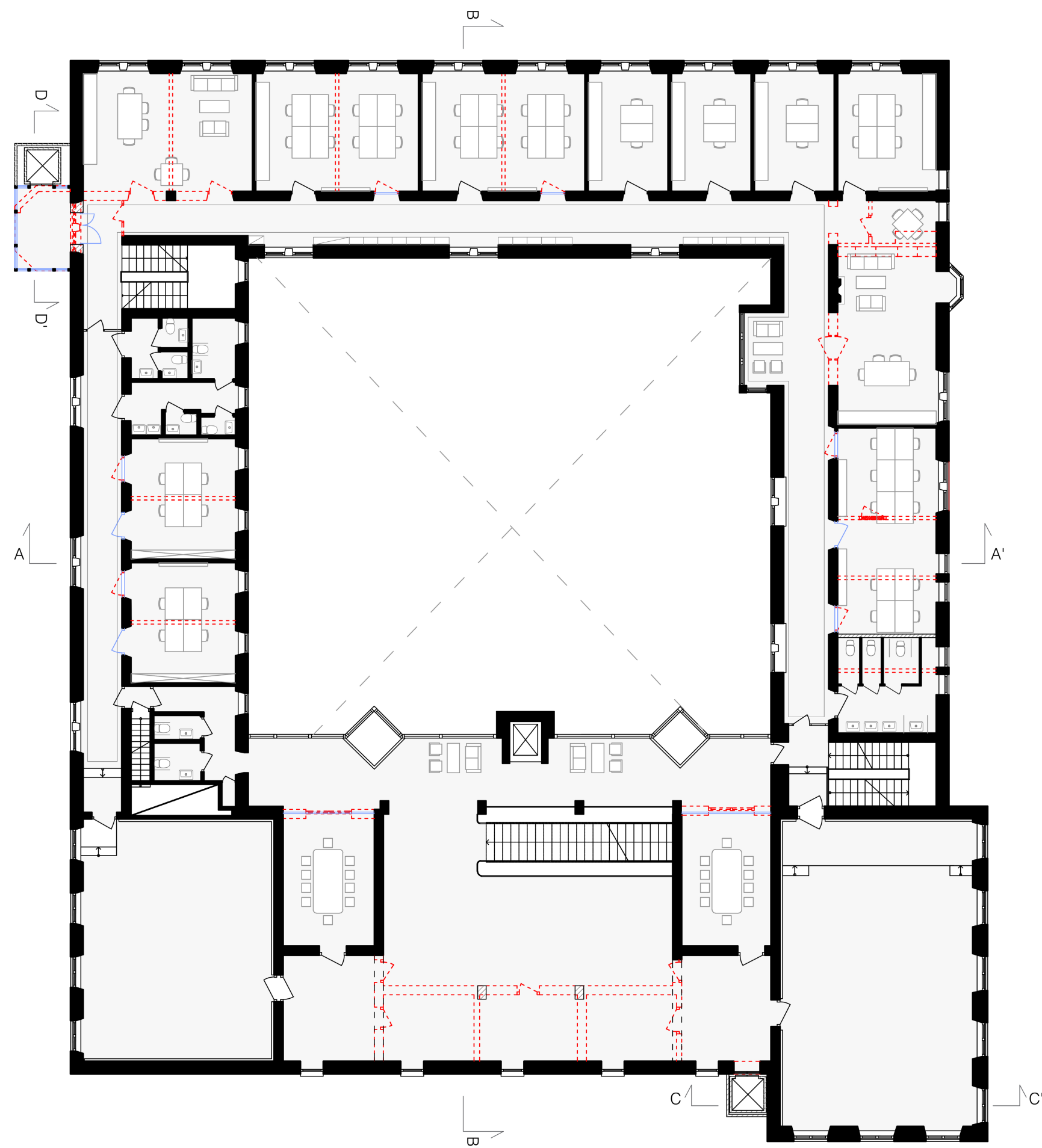
FUNCTIONAL DIAGRAMS



⌚ LOCAL CONTEXT AND MOVEMENT



PLAN FLOOR 3  
SCALE 1:200

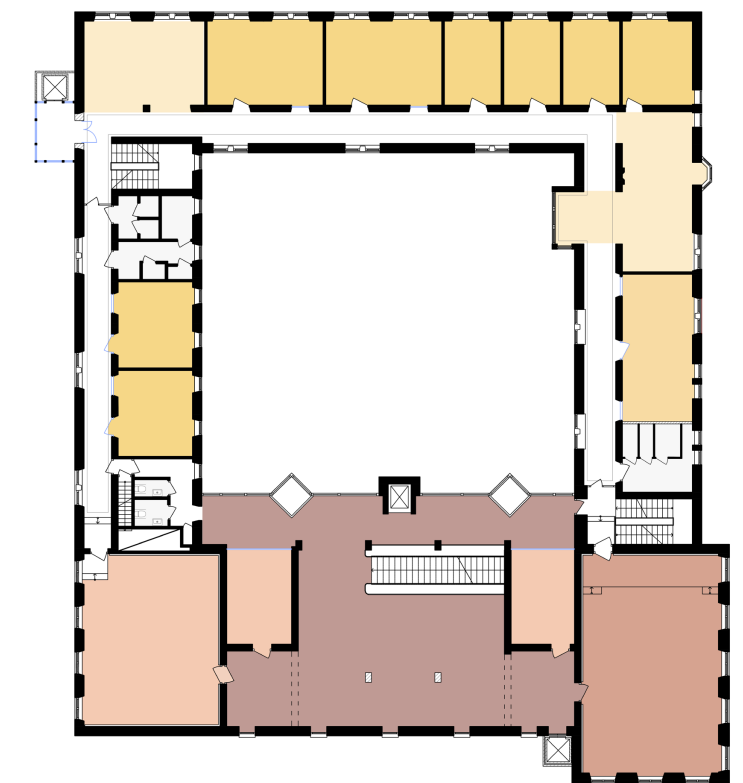


**Business incubator:**

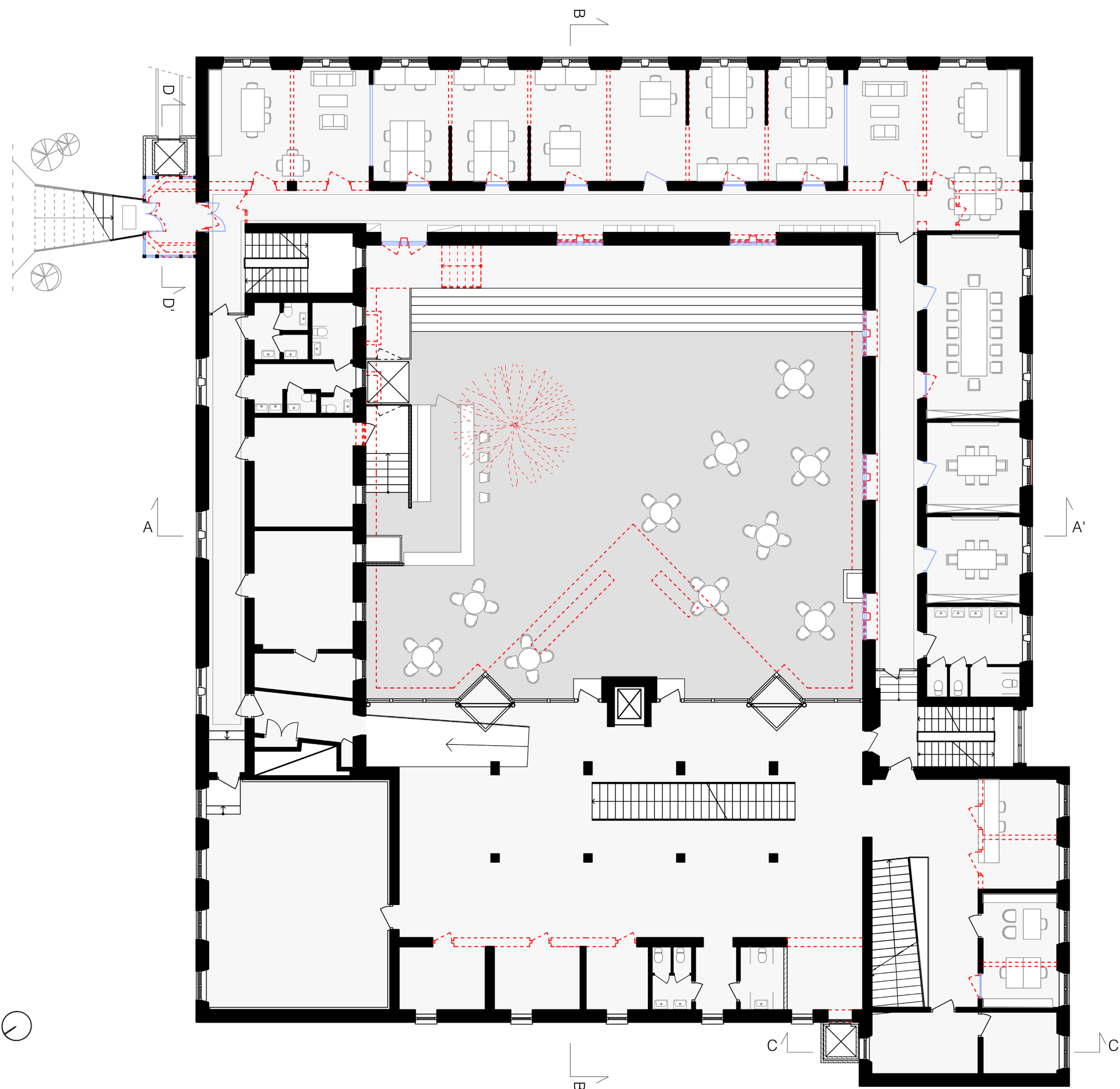
Co-working space (15 pers)	39m2
Freelancers spaces (2 pers)	54 m2
Start-up (4 to 8 people)	122,68 m2
Lunch/ relax area	81,05 m2
Bathrooms:	41,83 m2

**Centre of knowledge:**

Workshop spaces	133 m2
Exhibition	220 m2
Conference	112 m2
Bathroom	5,93 m2



PLAN FLOOR 2  
SCALE 1:200



**Student hub:**

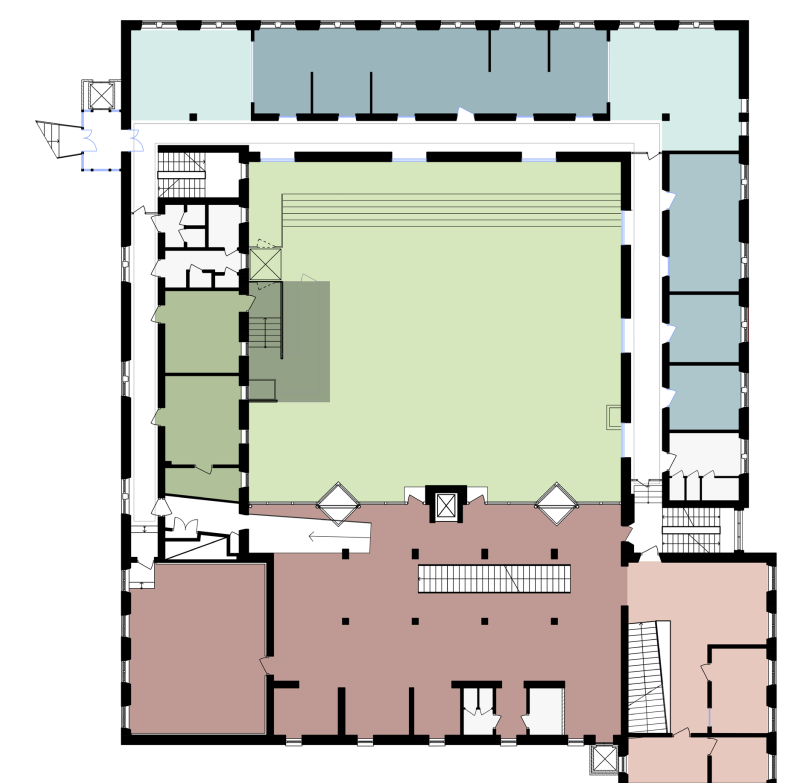
Group room (1 to 4 pers)	34 m2
Group room (4 to 8 pers)	36,84 m2
Open workspace (24 pers)	112,48 m2
Lunch/ relax area:	79,84 m2
Bathrooms:	41,83 m2

**Centre of knowledge:**

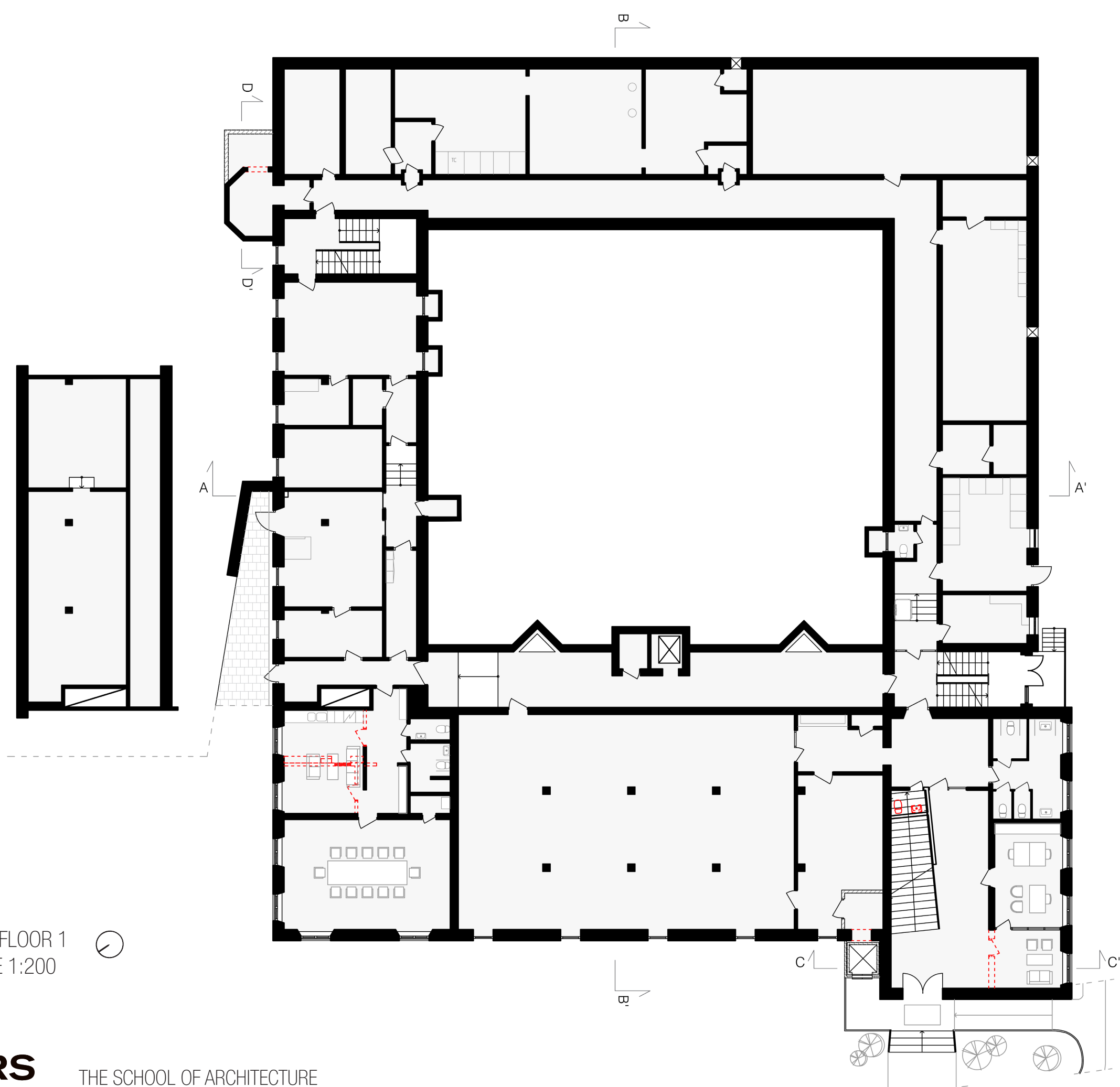
Exhibition	314 m2
Administration	58 m2
Bathroom:	25,32 m2

**Cafeteria/ Atrium:**

Open space	437,35 m2
Services	48,44 m2



PLAN FLOOR 1  
SCALE 1:200

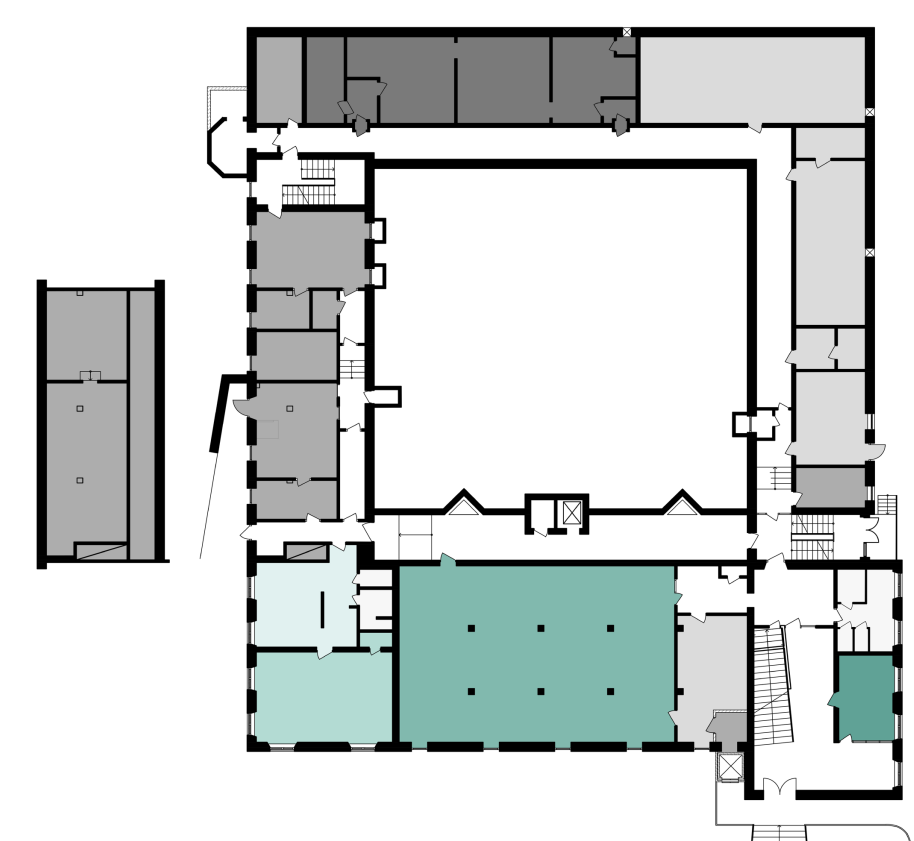


**Student Union:**

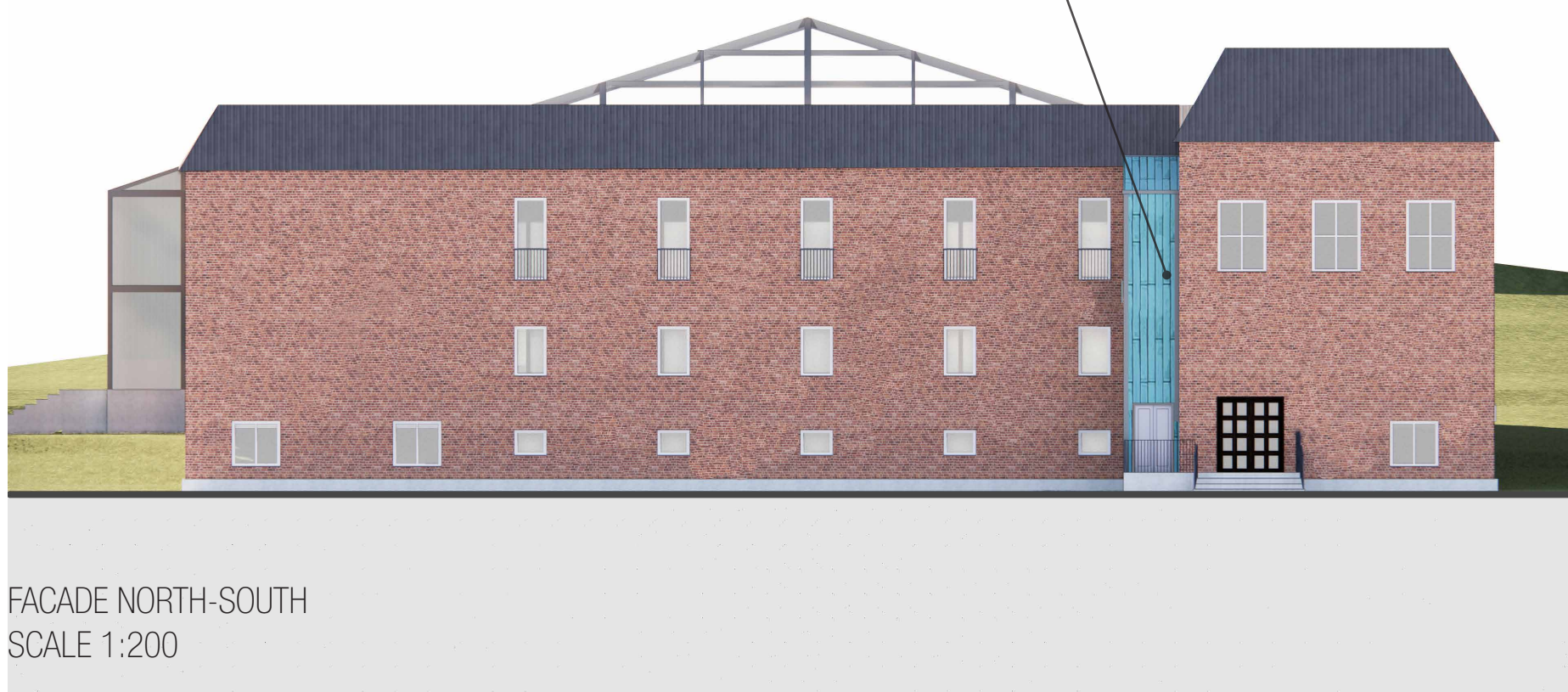
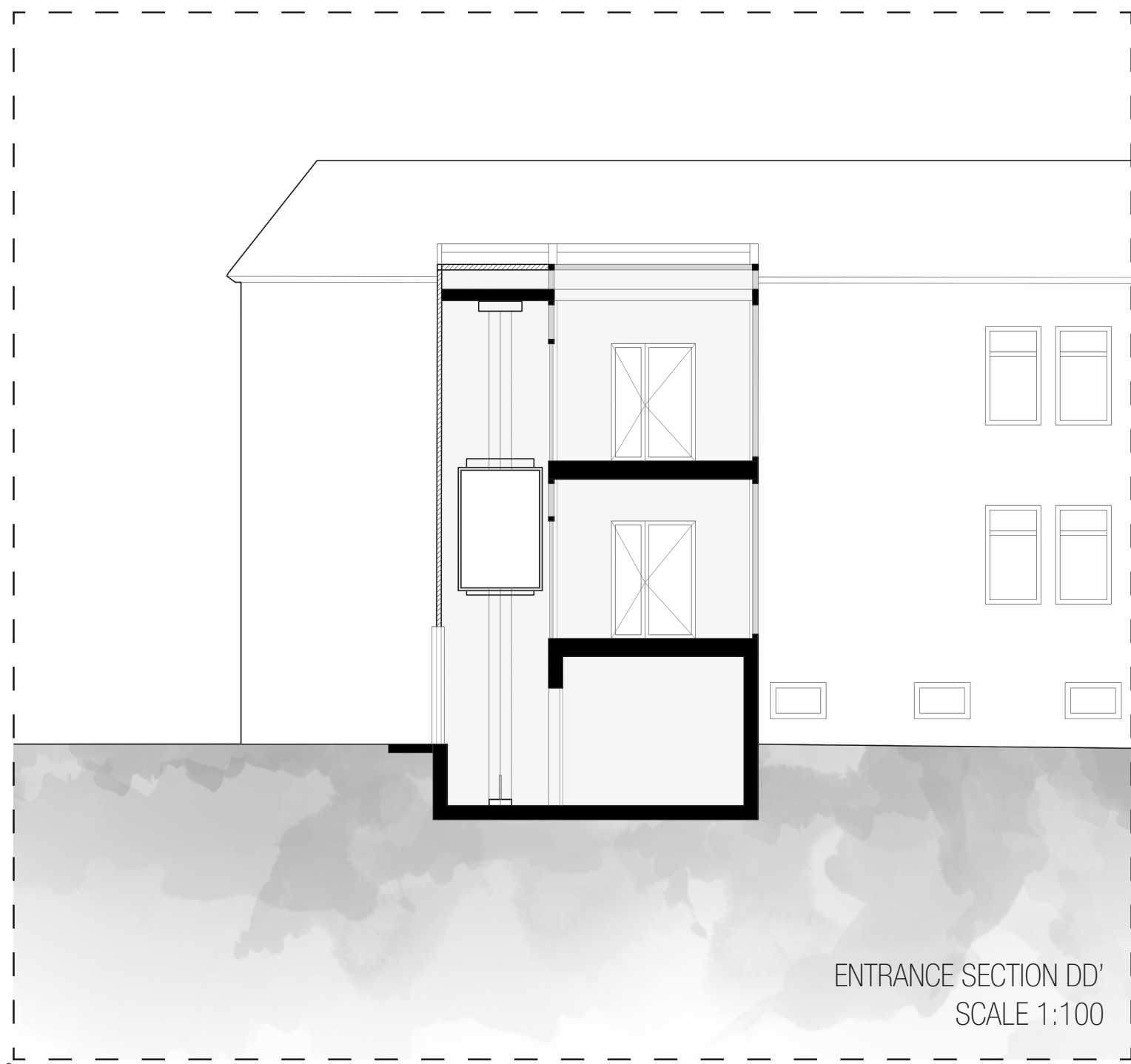
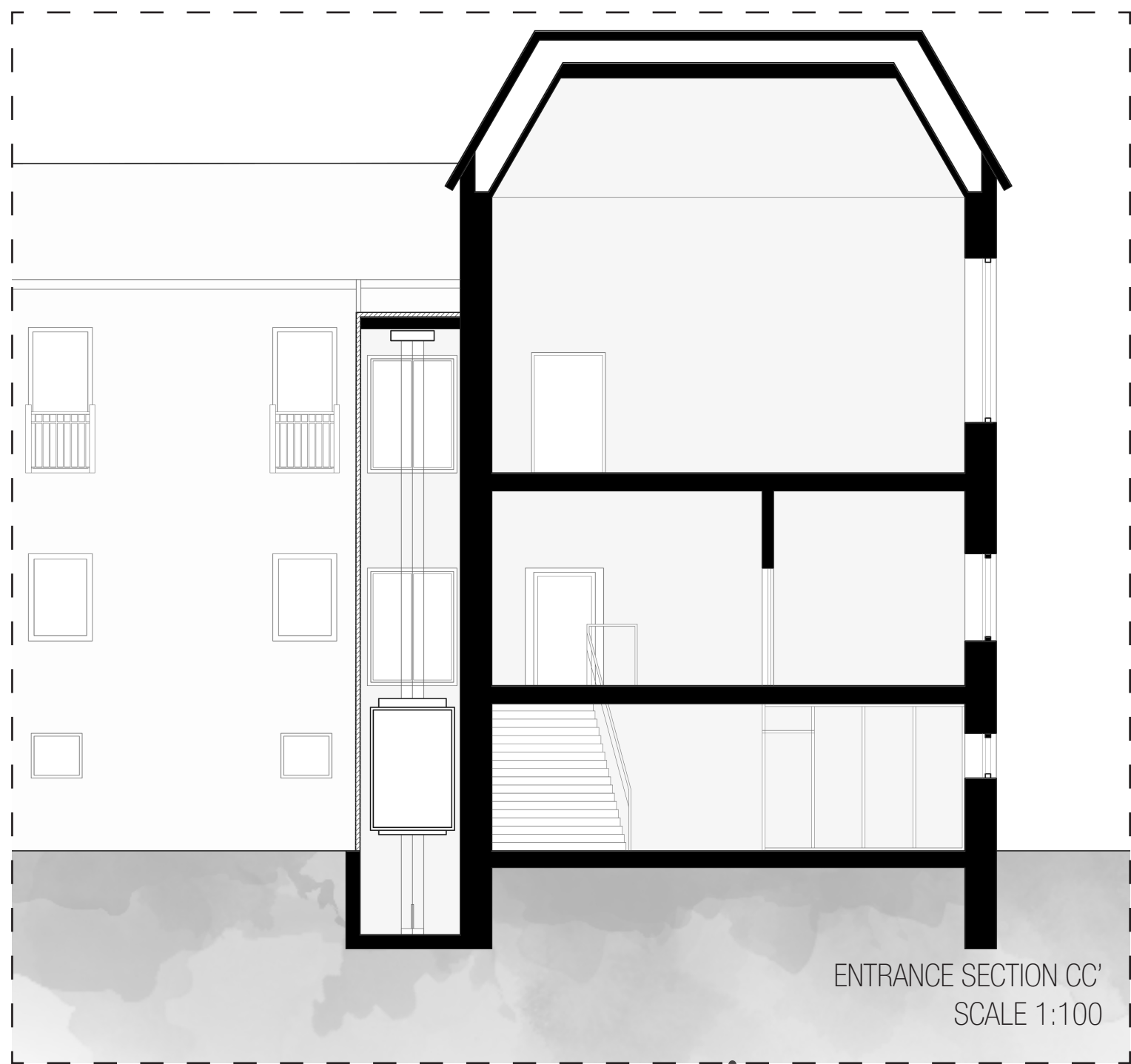
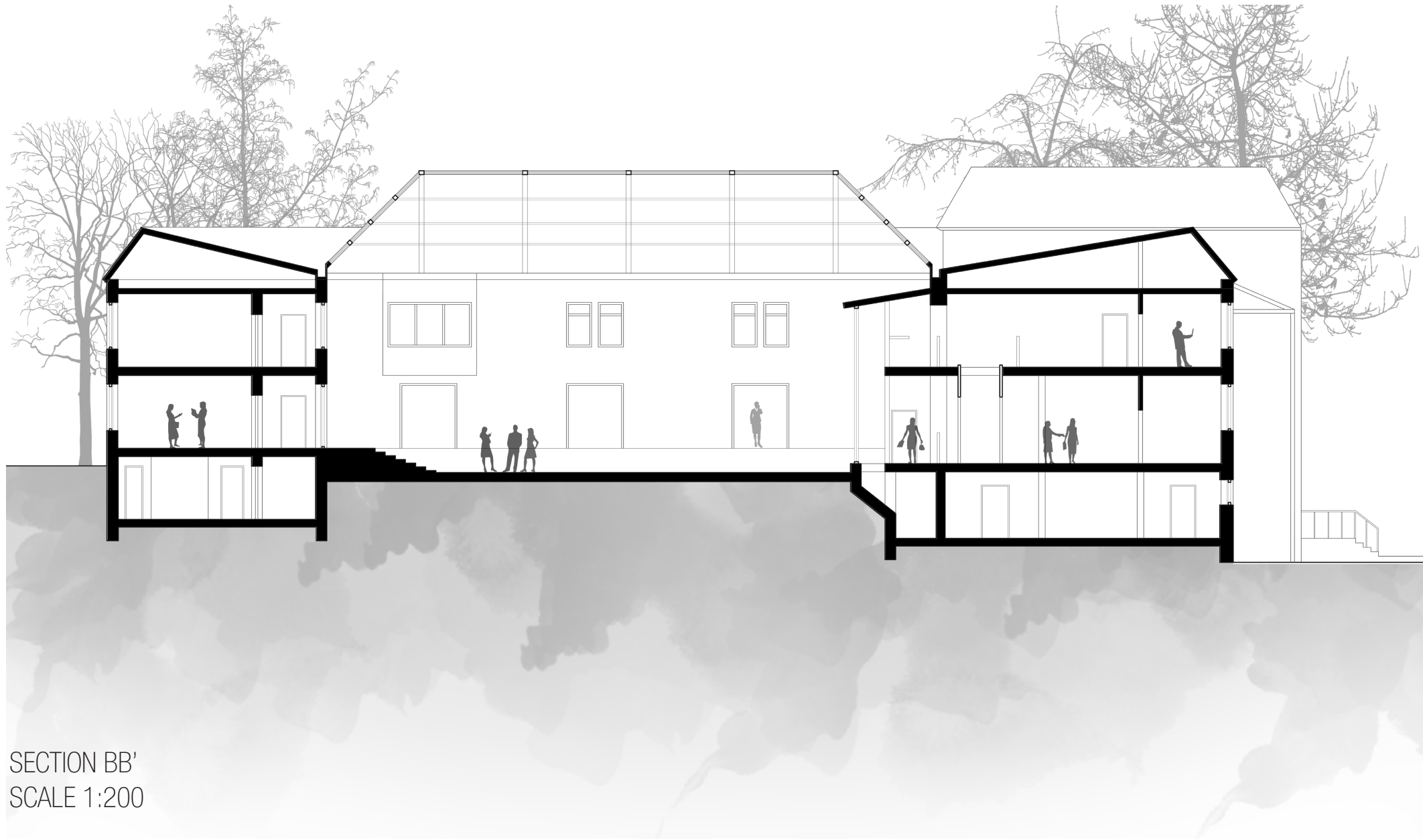
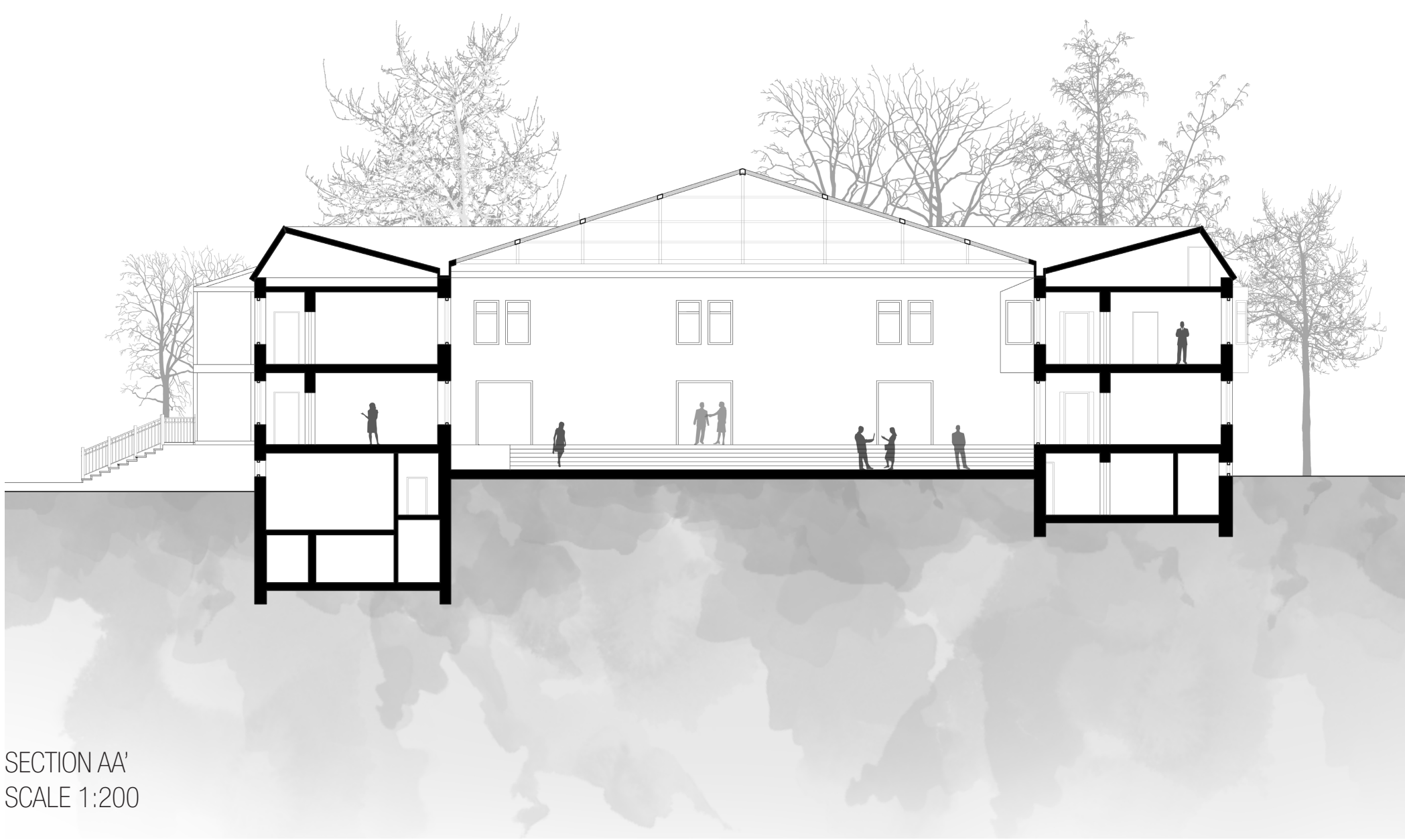
Kitchen / relax space	34 m2
Meeting room	46,5 m2
Bathroom	7,4 m2
Event room	183 m2
Student union office	17,4 m2

**General:**

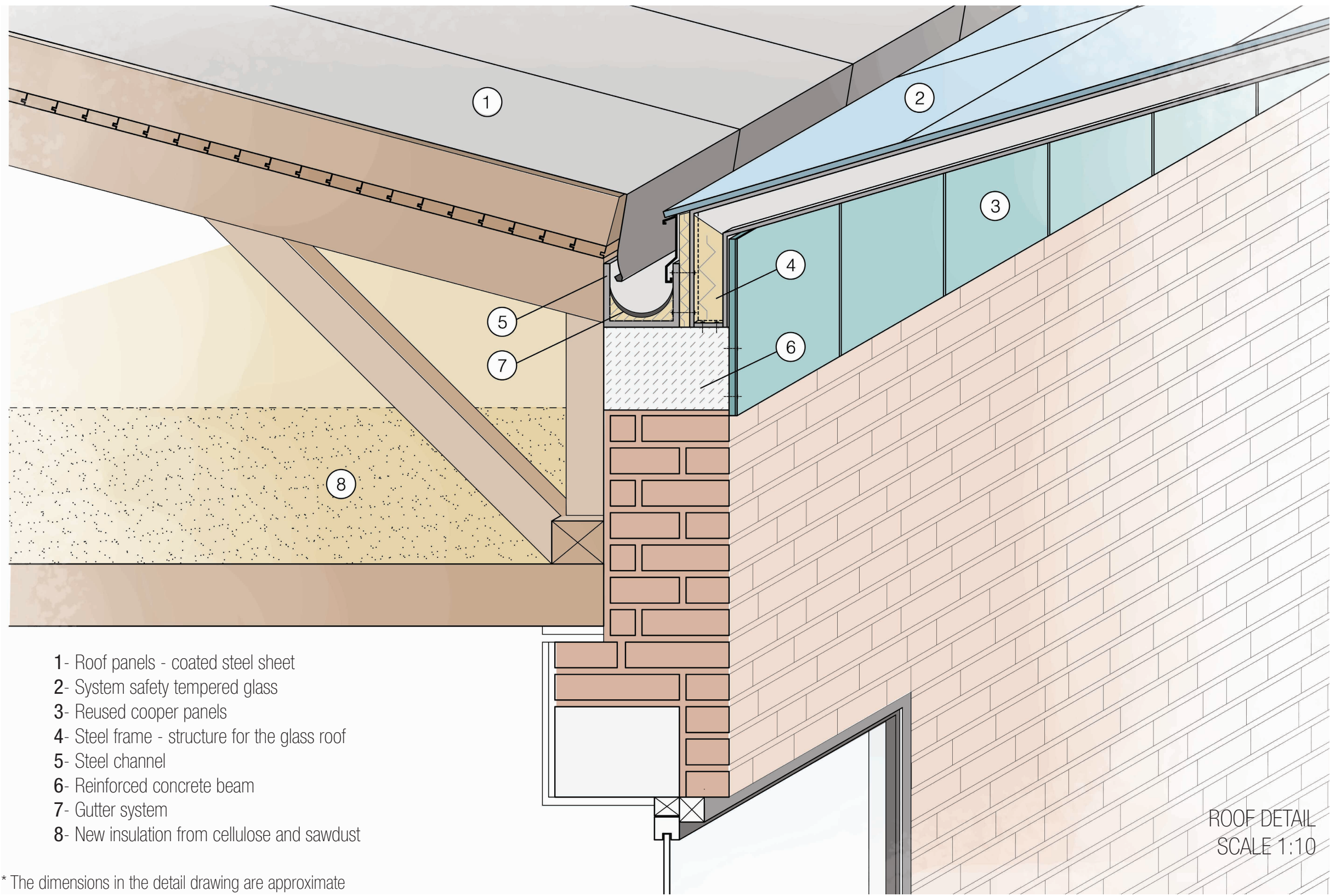
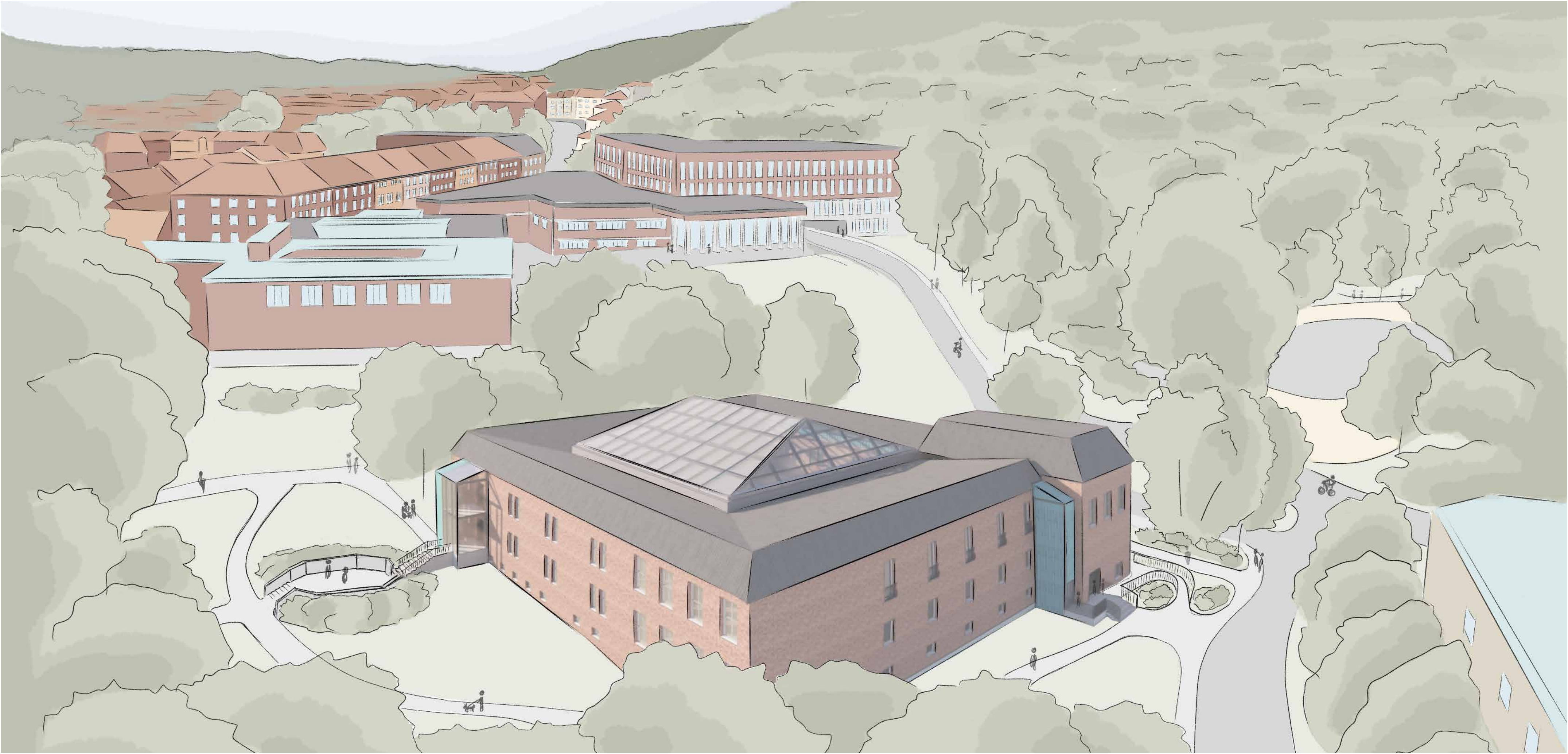
Bathroom	17 m2
Storage	194,6 m2
Bunker	107 m2
Technical rooms	225,8 m2



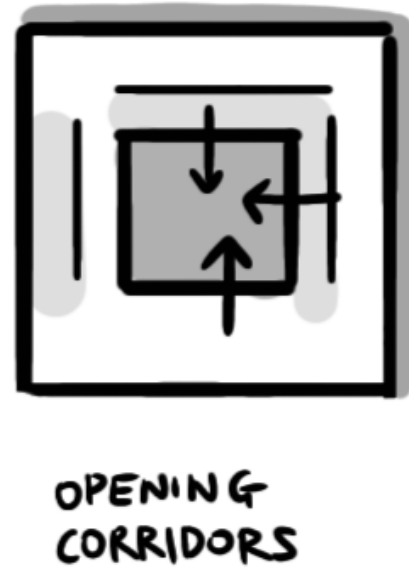
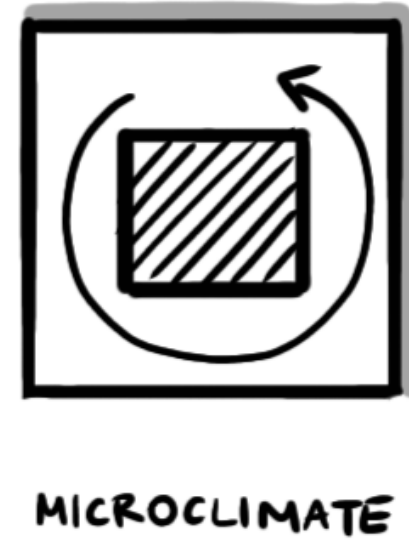
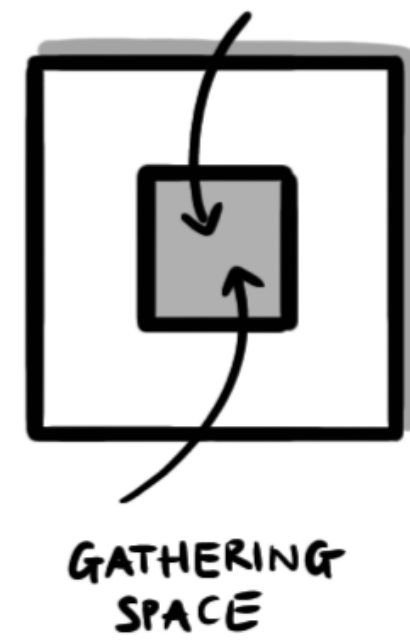








\* The dimensions in the detail drawing are approximate



One of the biggest interventions that we are proposing with our project is closing the yard with the glass roof. One of the arguments for that was the possibility of using that space more efficiently. With a closed yard the building will gain more space and could become a connector between student hub/incubator and public exhibition spaces. We see a big potential for the café in that place to increase the open spaces for social interactions.

Another aspect for closing the yard was the microclimate and potential drainage problem. Since the building is not insulated we wanted to reduce the possibility of heat leakage from the building. That concept is also related with the idea of 'opening' corridors. The closed yard can be a visual extension for them to make them more spacious and brighter which will have a positive impact on the atmosphere inside.

