

THE OPENING

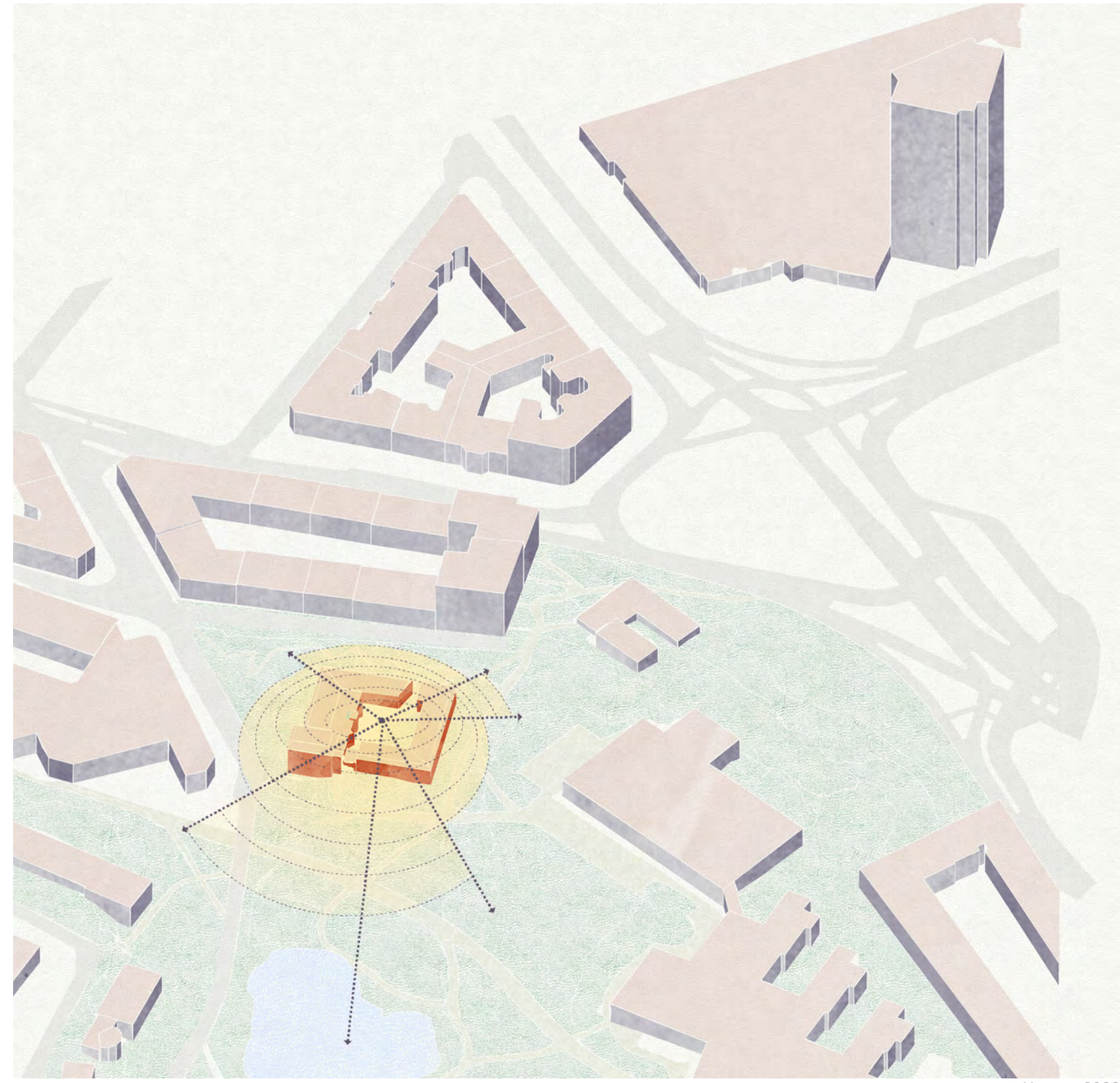
CONTEXT

The building is located in Göteborg, close to Korsvägen (a dynamic crossroads, with public transports and famous buildings). In the area there are some cultural and educational buildings. Just in front of the building you can find a park with a lake and a children's playground. The building is the old Court of Appeal of Göteborg, out of function since 1994, and used as an academic building managed by Akademiska Hus until 2020. Today, the protected building is empty and almost transparent in the area.

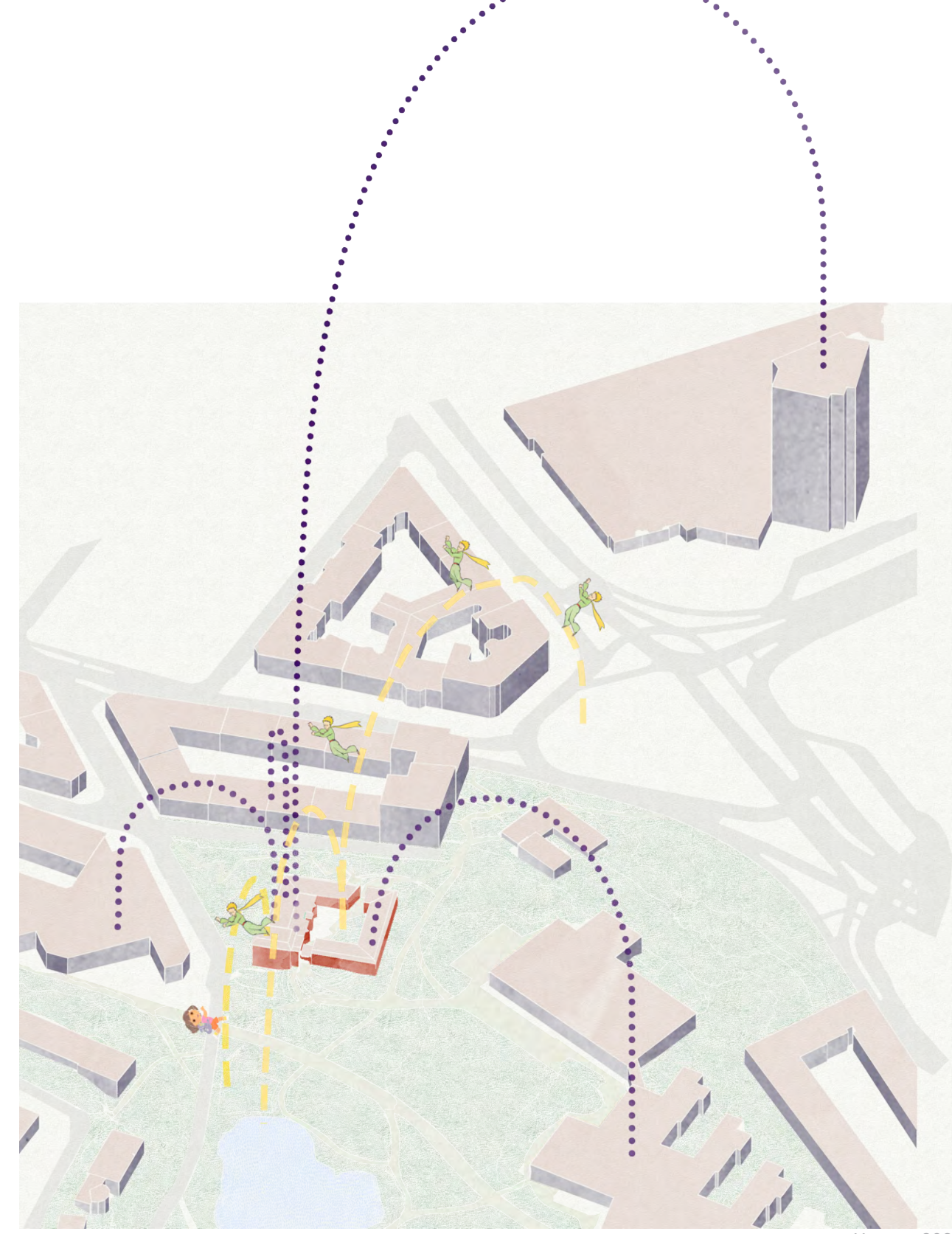
MAIN INTENTIONS

Through this analysis, the idea is to make the building in use and visible again. The building will be a connection point between Korsvägen and Renströmsparken. For that, an opening will be done in each side and a soil treatment will lead people from one point to the other through the new public square. In addition, this opening is here to create interest to the building. Because of that change, people will be intrigued by this transformation. It also allows to decrease the private/public boundaries and to create two different spaces in the building, one for housing and the other for public activities. The building will be a mix of restaurants, bar, exhibition spaces, a nightclub for the public part and a mix of housing and common areas for the private part. Inside, few transformations are done. The main point is to create modular spaces where reused materials, furniture, and so on can be used. One of the idea is to create a place where people can be trained on different activities and live close to the working area. More than a transformation project, the idea is to follow the increasing attract for the place (with the future Västlänken for example) to create a meeting space, where everyone can find something to do, from the youngest age to the oldest.

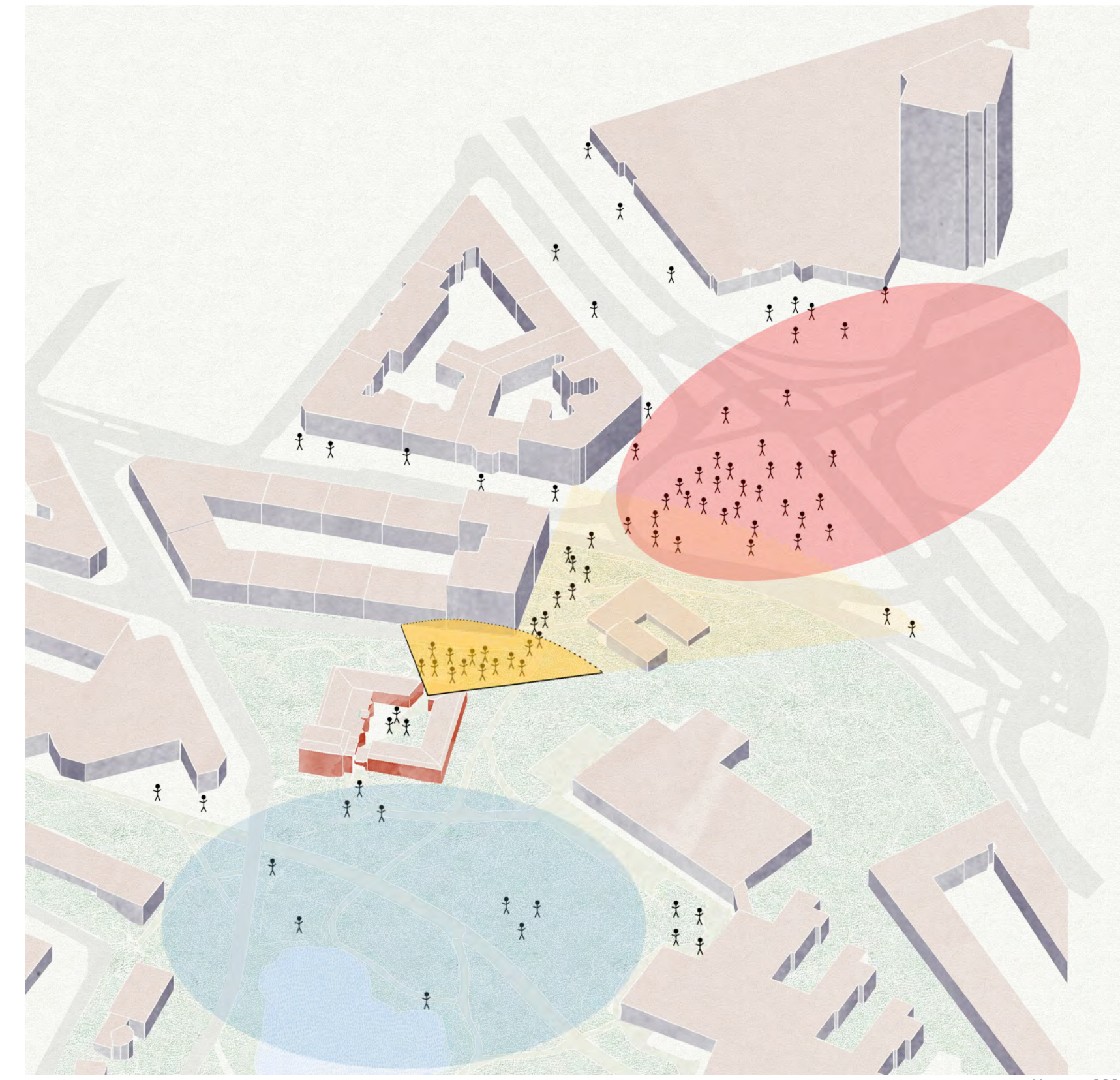
OPENING THE BUILDING TO ITS SURROUNDINGS BY DECREASING THE PRIVATE/PUBLIC BOUNDARIES



PHYSICAL AND PROGRAMMATIC CONNECTION THROUGH THE BUILDING



AN OPENING ADAPTED TO ITS CONTEXT TO MAKE THE BUILDING VISIBLE AGAIN AND KEEP THE COURTYARD



GROUND TREATMENT FROM RENSTRÖMSPARKEN TO KORSVÄGEN



Master plan

Guidance through the building with a ground treatment from the park to Korsvägen to help the people to know which way to take. Different paths depending on the use: a playful one for the children from the outdoor playground to the indoor one with a climbing wall, a playful circuit, ramps and stairs.

Hamon, 2022

ENTRANCE THROUGH A CAVE WHICH CREATES TENSION AND INVITES TO GO IN



Southern perspective

Progressive journey from outside to inside. The tension between each part of the building is kept by a terrace and a destroyed appearance.

Barbotin, 2022

VISUAL LINK BETWEEN EACH PART OF THE BUILDING

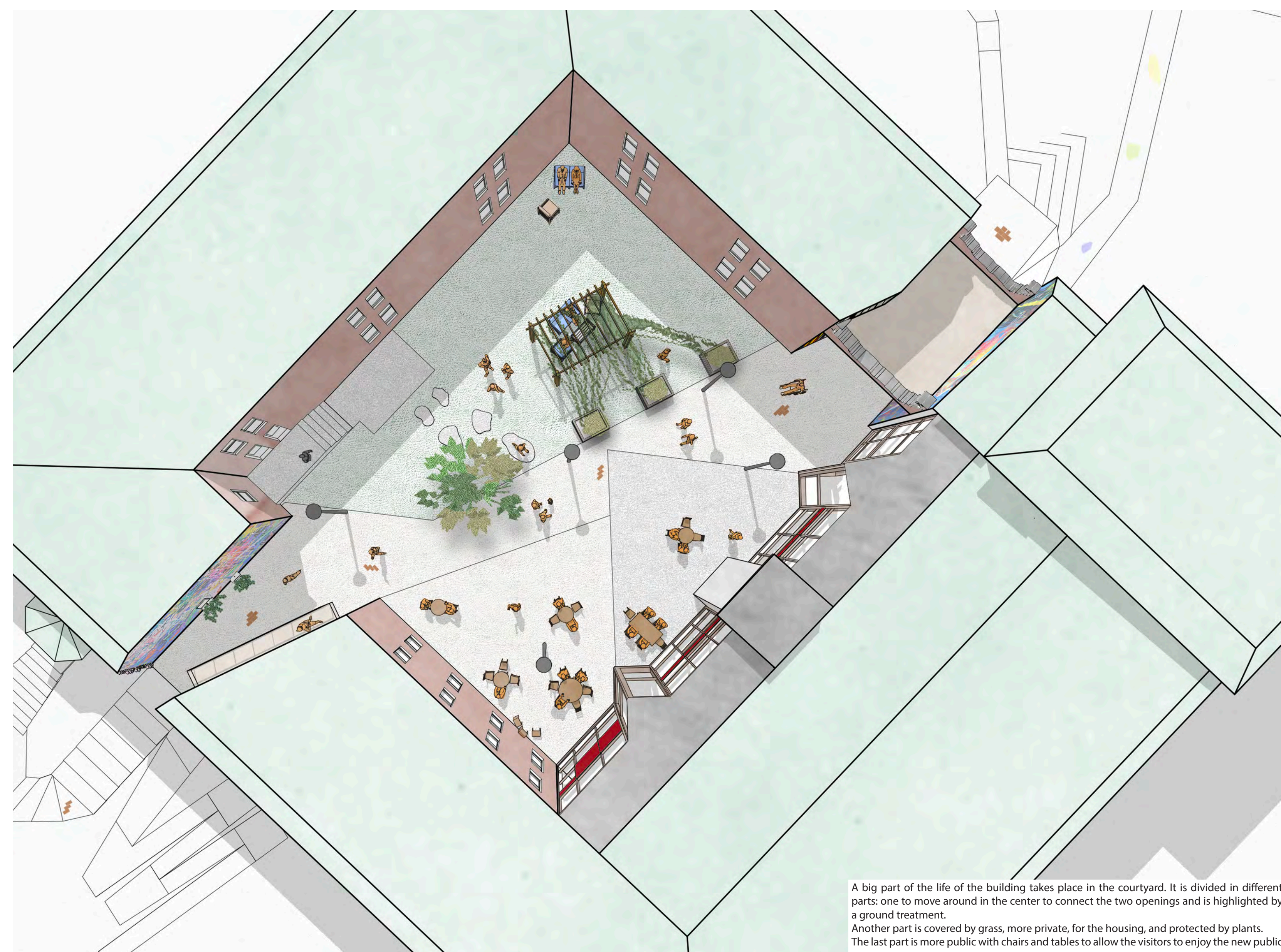


Opening perspective

Diagonal view through the courtyard. The new walls of the openings are covered by graffiti where everyone can add their drawings in order to invite people to go in thanks to the colors.

Barbotin, 2022

CREATION OF A PUBLIC SQUARE INTO THE BUILDING



Top perspective

A big part of the life of the building takes place in the courtyard. It is divided in different parts: one to move around in the center to connect the two openings and is highlighted by a ground treatment. Another part is covered by grass, more private, for the housing, and protected by plants. The last part is more public with chairs and tables to allow the visitors to enjoy the new public square.

Hamon, 2022

A BIGGER OPENING ON THE SIDE OF KORSVÄGEN TO GUIDE PEDESTRIANS

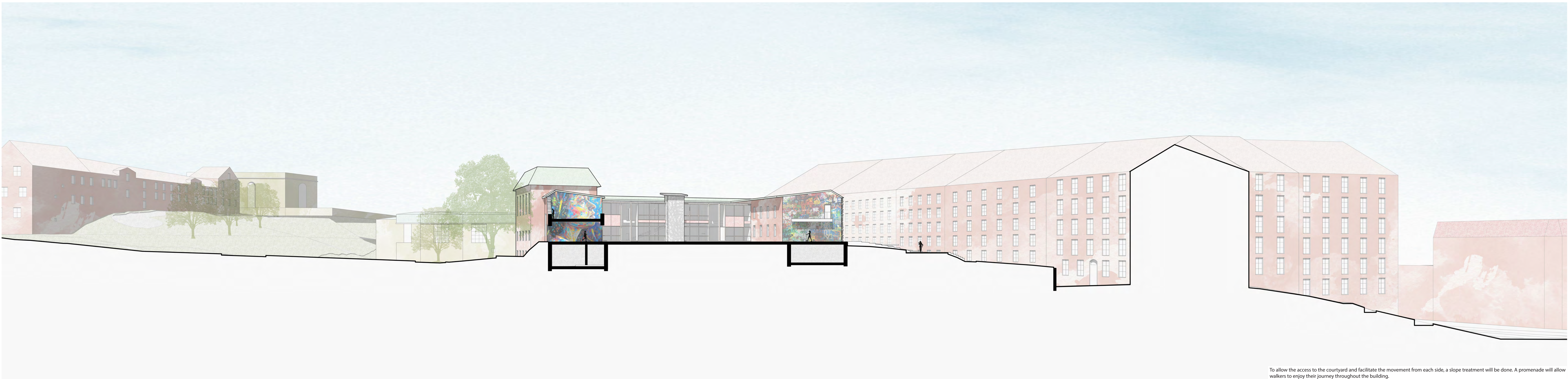


Northern perspective

The tension between each part of the building is kept by the old inside furniture's and a balcony. The openings allow to create different indoor spaces, a more private one in the east part with housings and a more public one in the west part.

Barbotin, 2022

SLOPE TREATMENT TO INTEGRATE THE BUILDING INTO ITS SURROUNDINGS



To allow the access to the courtyard and facilitate the movement from each side, a slope treatment will be done. A promenade will allow walkers to enjoy their journey throughout the building.

Landscape section

USE OF THE OPENING AS AN IN-BETWEEN SPACE



Creation of a link between the two different parts of the building (housing and common area) by the opening.

Section

CREATION OF A PROMENADE LEADING TO THE OPENING



Full height opening to guide the pedestrian to the courtyard. This space is more open to correspond to the more active atmosphere of that part.

Northern facade

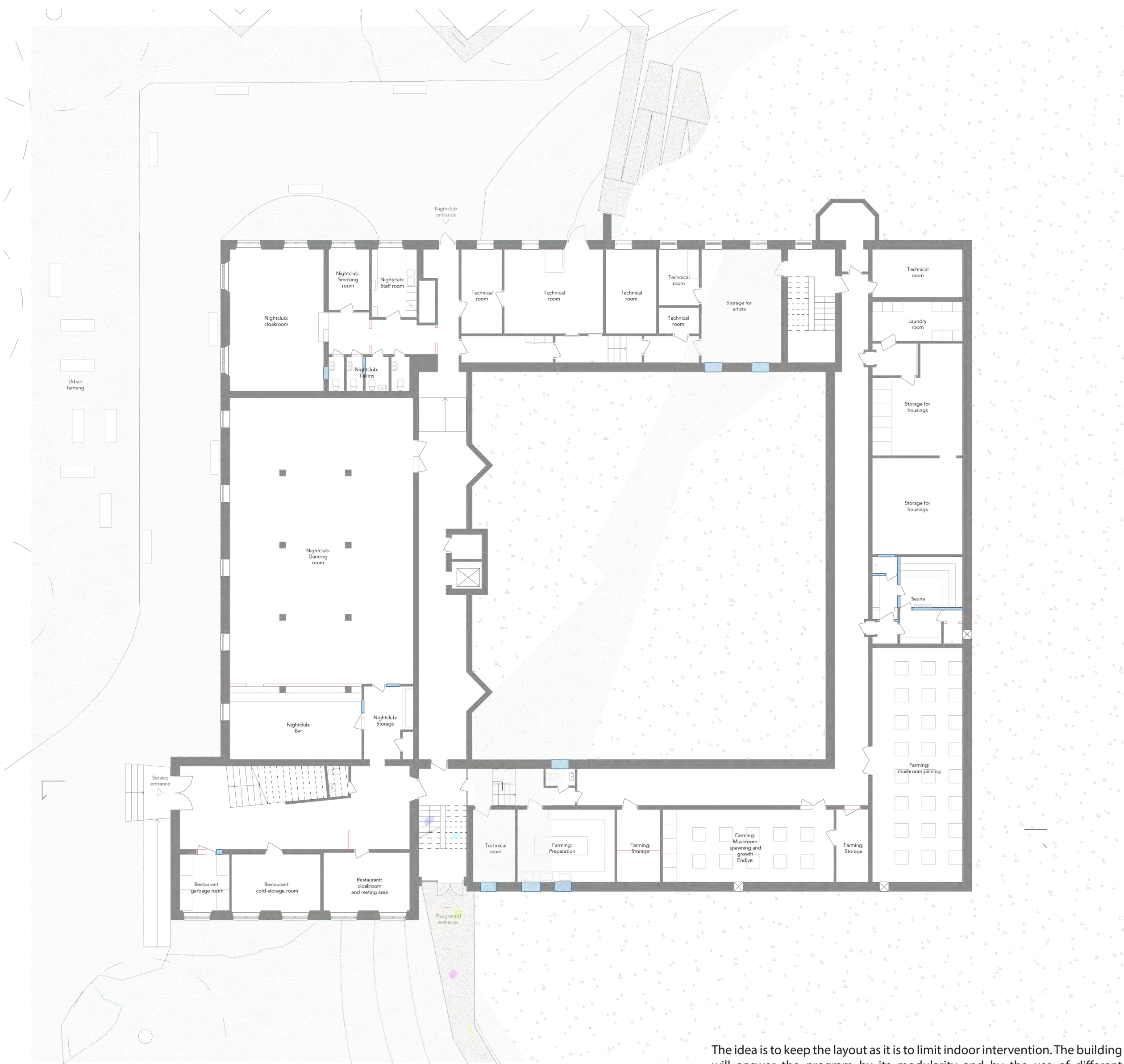
DIFFERENT ACCESSES DEPENDING ON THE USE



Creation of a terrace for a more private entrance, calmer, which corresponds to this area atmosphere.

Southern facade

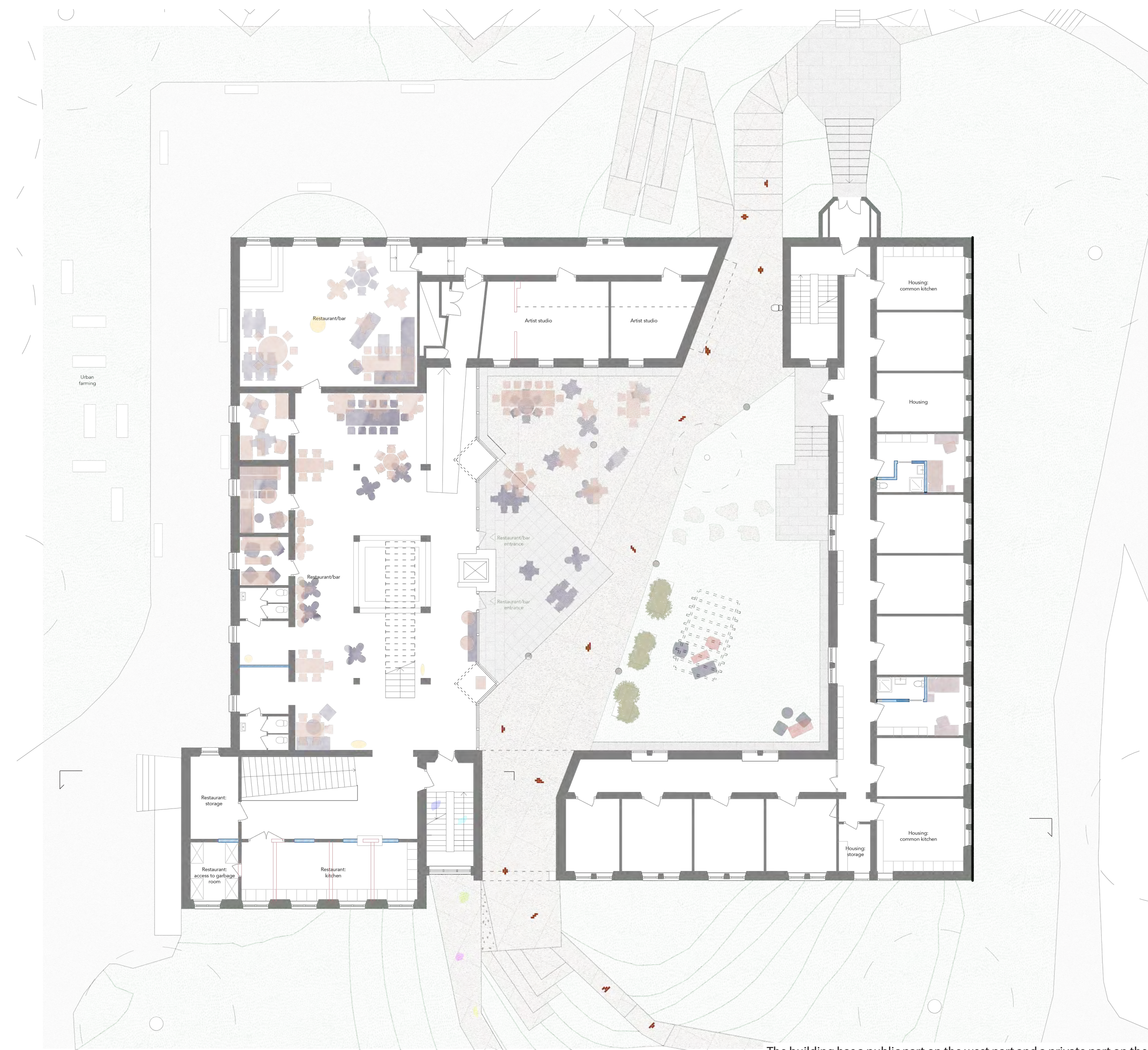
A MULTI-FUNCTIONAL BASEMENT



The idea is to keep the layout as it is to limit indoor intervention. The building will answer the program by its modularity and by the use of different furniture, mainly reused, that allow different indoor organization.

Basement plan

A MIX BETWEEN PUBLIC, SEMI-PUBLIC AND PRIVATE SPACES



The building has a public part on the west part and a private part on the east part with housing.

Ground floor plan

DIFFERENT TYPES OF LAYOUT



First floor plan



A TEACHING SYSTEM ON SITE



Engage voluntary people that are in need for change an apprenticeship

Purpose: Form young people in order to give them a solid professional foundation



Supported by professionals and participants along their path

The workers are formed and guided by professionals from the field they have chosen



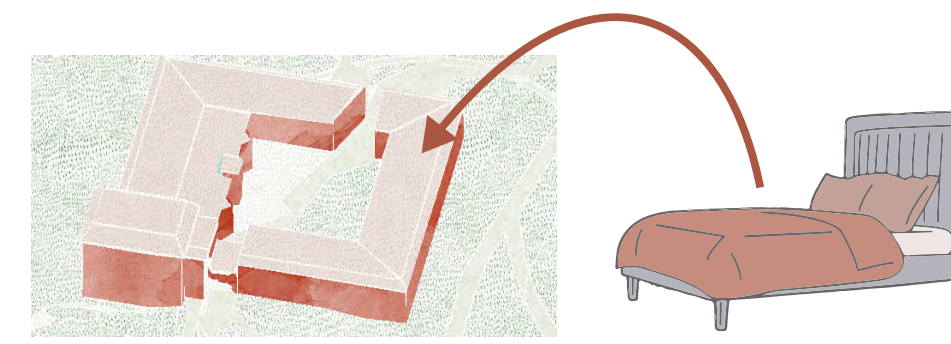
Cooking

Waiter



Farming

Handwork



Housing in situ

Lower cost rent + salary

Barbotin, 2022

A BUILDING MANAGED BY AN ASSOCIATION



AKADEMISKA HUS

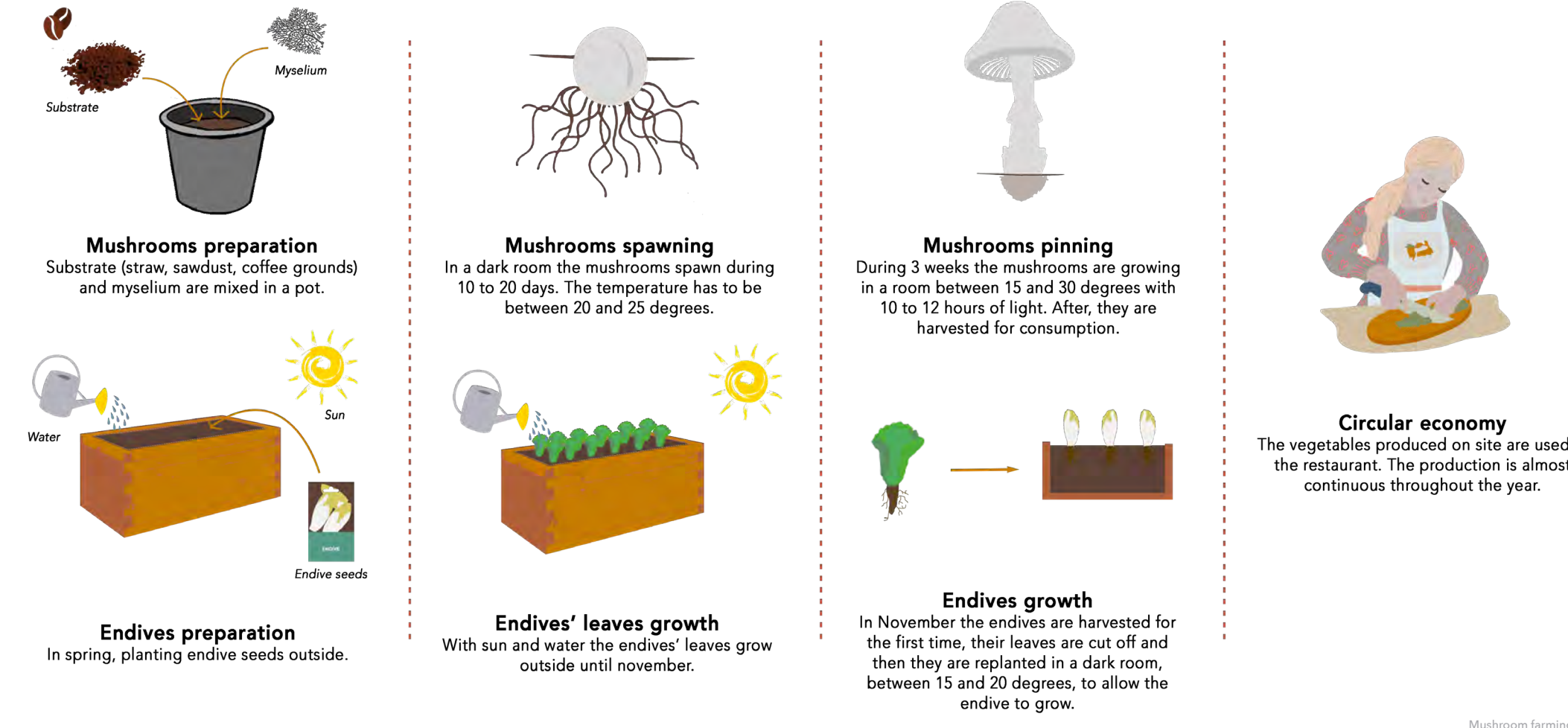
RENTAL TO AN ASSOCIATION MANAGED BY THE DIFFERENT ACTORS

ARTISTS RESTAURERS FARMERS NIGHTCLUB

THE ACTORS, WHO CAN LIVE IN THE BUILDING'S ACCOMMODATION, ARE BEING TRAINED IN THE DIFFERENT FIELDS

Hamon, 2022

FOOD PRODUCTION ON SITE



MODULAR PUBLIC SPACES BASED ON REUSED MATERIALS



Modular space perspective

Barbotin, 2022

AN OPENING SUPPORTED BY A METALLIC STRUCTURE



Construction detail

Hamon, 2022

Construction detail

A metallic beam will support the bricks and the terrace. It will be a 3 dimensions structure manufactured beforehand.

INDIVIDUAL HOUSING



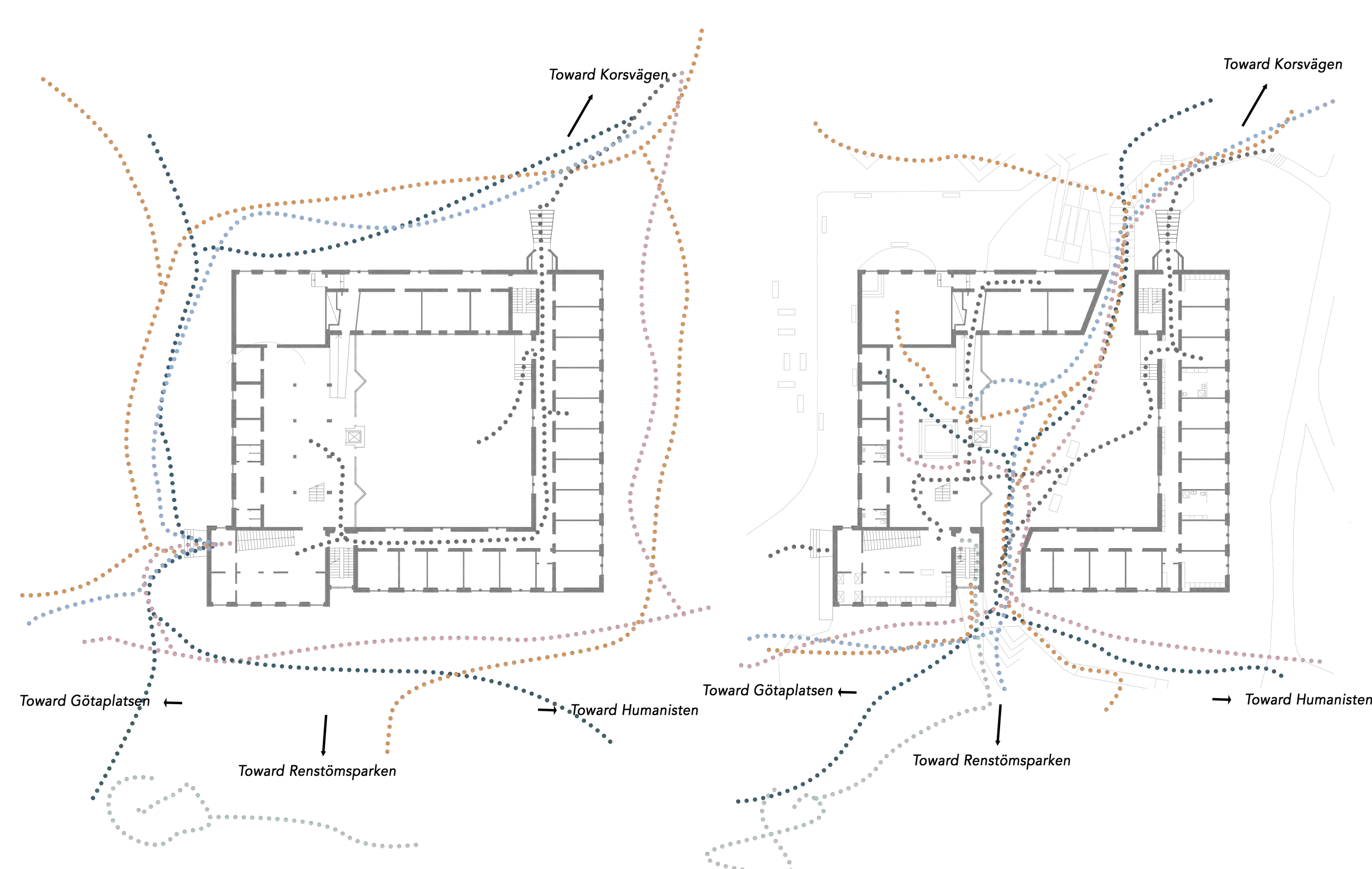
Housing perspective

Barbotin, 2022

A MIX OF USERS

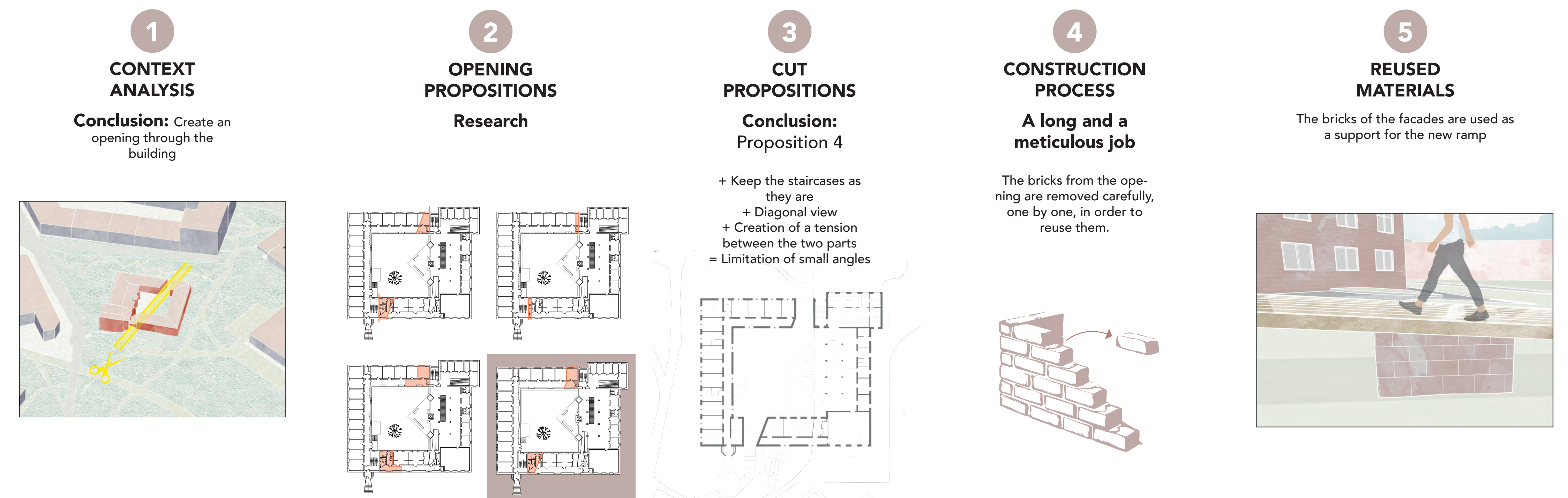
- Workers**
Around 5000 workers that are less than 10 minutes walk from the site. Can enjoy the restaurant/bar.
- Children**
3 schools close to the site. A popular outdoor playground. Can enjoy the indoor playground.
- Inhabitants**
22 studios. The inhabitants are working and learning on site. They can also enjoy the restaurant/bar.
- Tourists**
Around 6 000 000 tourists per year. Can enjoy the exhibitions, the restaurant/bar.
- Students**
Around 1 000 students at Humanisten. They can enjoy the restaurant/bar, the nightclub and some workshops.
- Neighbours**
Around 8000 inhabitants that are less than 10min of walk from the site. The medium age in 36 yo and the ratio woman/man is around 50/50. They can enjoy the restaurant/bar, the workshops, exhibitions, and the nightclub.

EVOLUTION OF THE CIRCULATION THANKS TO THE INTERVENTION



Hamon, 2022
Numbers: City of Gothenburg, 2022

CONSTRUCTION PROCESS



Barbotin, 2022