

# THE OPENING



## BOOKLET

### TRANSFORMATION PROJECTS AND ENVIRONMENTAL CARE

ARK 626 - ELKE MIEDEMA & OSCAR CARLSON

CHALMERS SCHOOL OF ARCHITECTURE

Ocyane Hamon  
Adélie Barbotin

## CONTEXT

The building is located in Göteborg, close to Korsvägen (a dynamic crossroads, with public transports and famous buildings). In the area there are some cultural and educational buildings. Just in front of the building you can find a park with a lake and a children's playground.

The building is the **old Court of Appeal** of Göteborg, out of function since 1994, and used as an academic building managed by Akademiska Hus until 2020. Today, the protected building is **empty** and **almost transparent** in the area.

## MAIN INTENTIONS

Through this analysis, the idea is to make the building in use and **visible again**.

The building will be a **connection point** between Korsvägen and Renströmsparken. For that, **an opening** will be done in each side and a soil treatment will lead people from one point to the other through the **new public square**.

In addition, this opening is here to **create interest** to the building. Because of that change, people will be intrigued by this transformation. It also allows to **decrease the private/public boundaries** and to create two different spaces in the building, one for housing and the other for public activities. The building will be a mix of restaurants, bar, exhibition spaces, a nightclub for the public part and a mix of housing and common areas for the private part. Inside, few transformations are done. The main point is to create **modular spaces** where reused materials, furniture, and so on can be used.

One of the idea is to create a place where people can be trained on different activities and live close to the working area.

More than a transformation project, the idea is to **follow the increasing attract** for the place (with the future Västlänken for example) to create a **meeting space**, where everyone can find something to do, from the youngest age to the oldest.



# ANALYSIS

- Proximity to important sites
- The old courthouse in-between important places
- Important flows centralized in Korsvägen



**Flows and Influence Areas**

Barbotin, 2022

# ANALYSIS

- Different users in the area but few interactions between them.

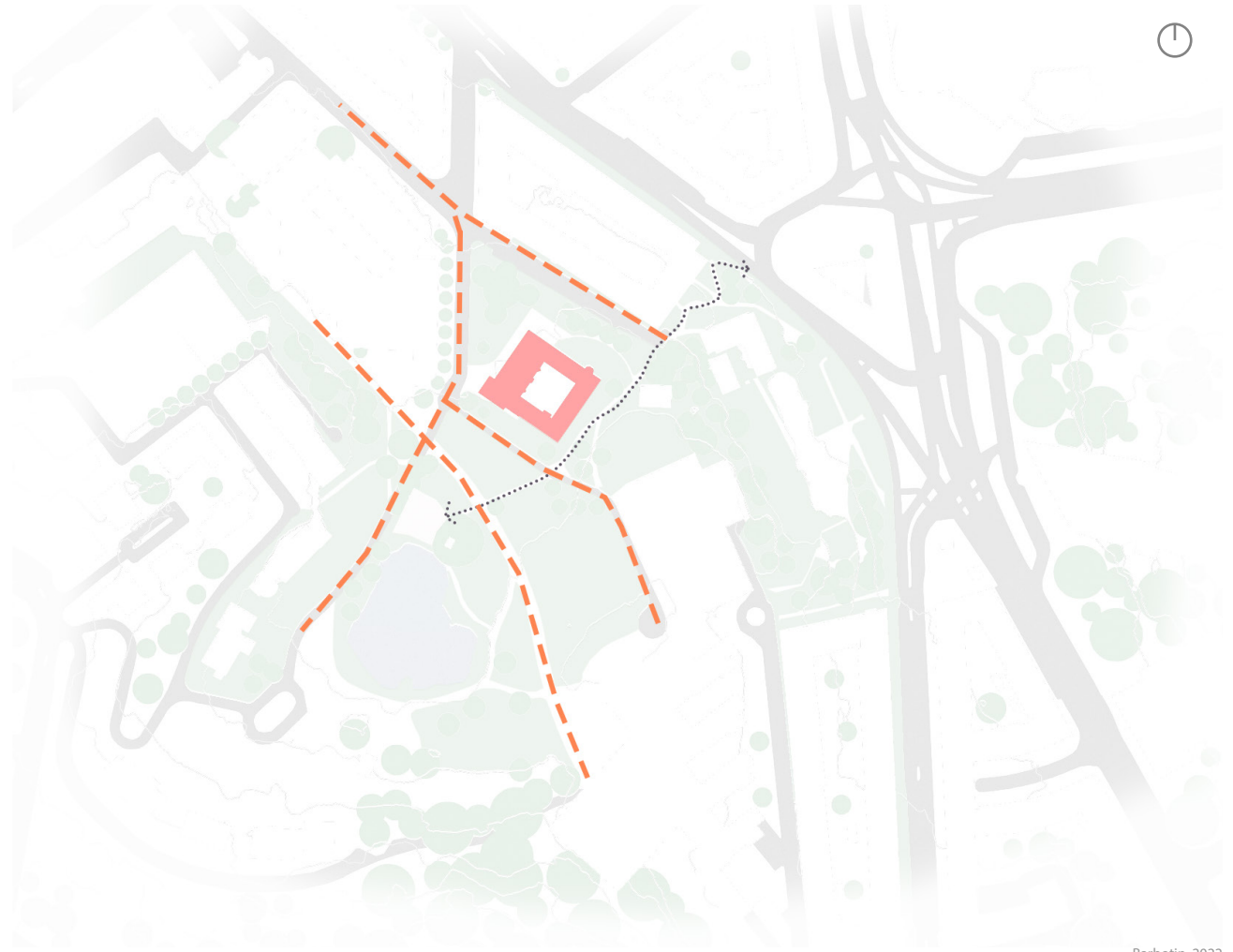


Barbotin, 2022

**DIFFERENT TYPES OF USERS**

# ANALYSIS

- Lack of connection between the different green spaces and between Korvsägen and the site.
- The crossroad is not well define.
- The green space in front of Humanisten seems to be a separation between the parc and the Courthouse.

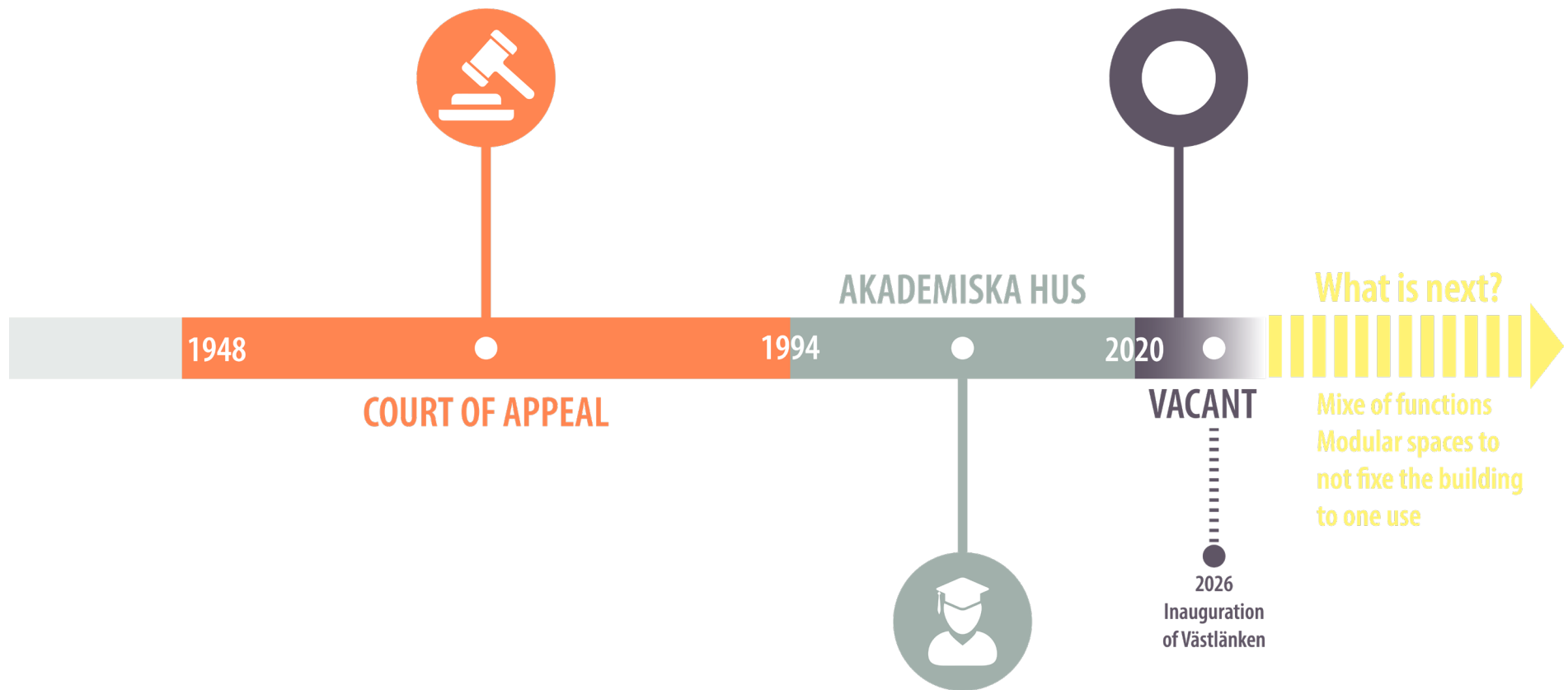


CONNECTIONS

Barbotin, 2022

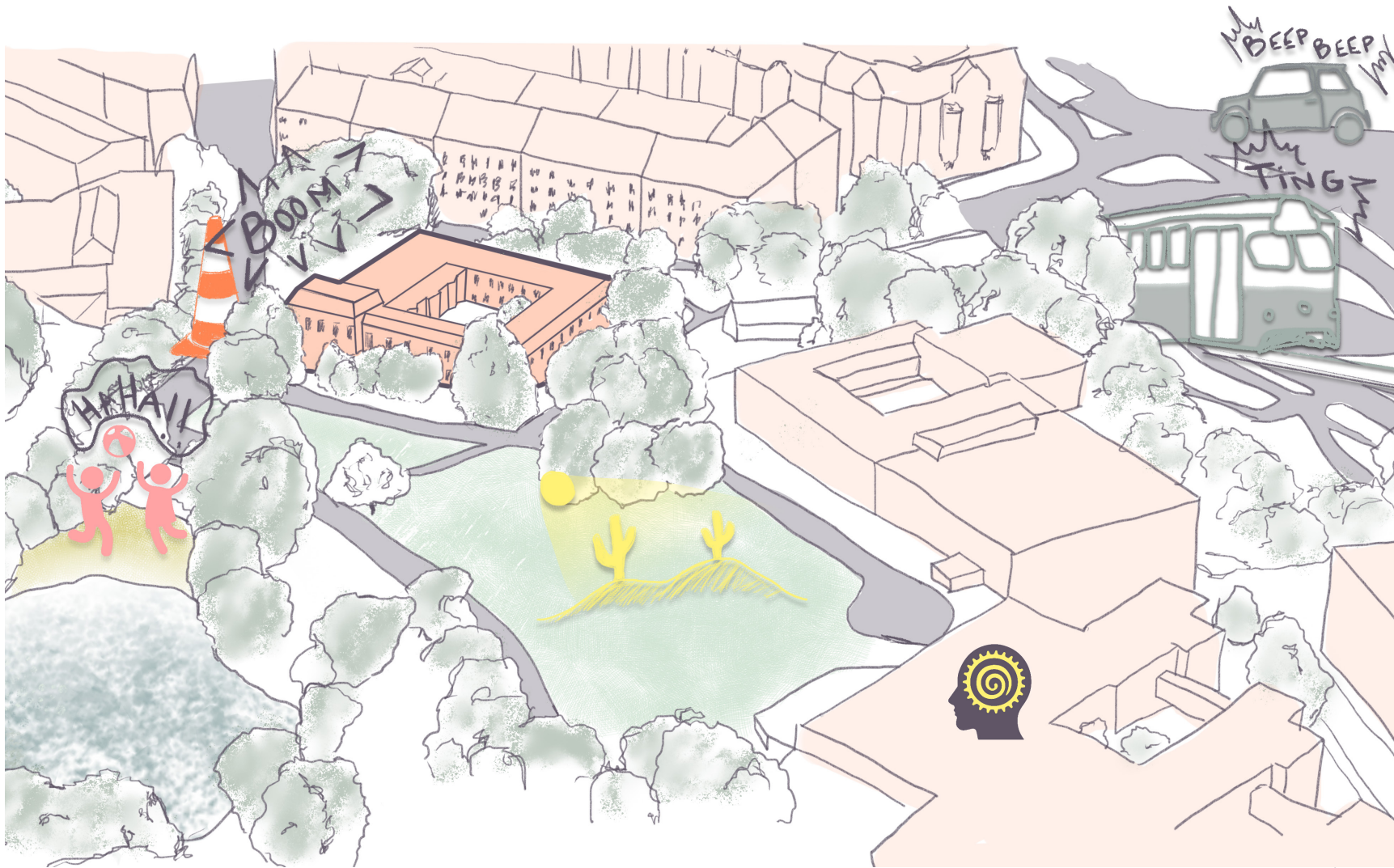


# ANALYSIS



**A BUILDING WHICH SEEMS TO SEARCH FOR ITS IDENTITY**

# ANALYSIS



Barbotin, 2022

**DIFFERENT ATMOSPHERES IN CONFRONTATION**



# ANALYSIS

- A building invisible in the area





# ANALYSIS

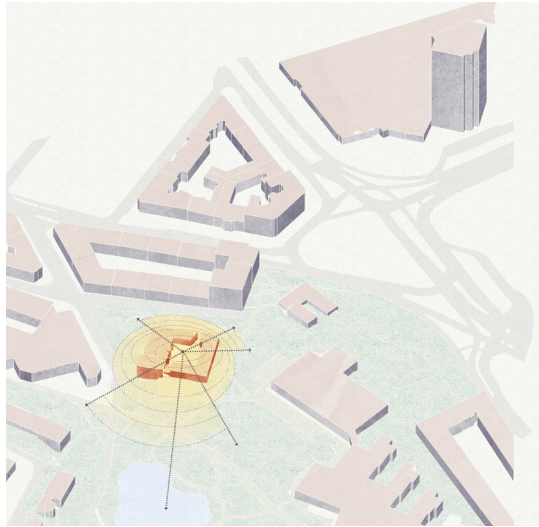
- A building in good condition with quality materials



Analytics group B, 2022

# DESIGN BRIEF

## OPEN THE BUILDING TO ITS SURROUNDINGS



Hamon, 2022

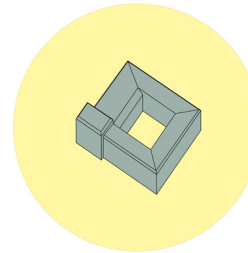


Barbotin, 2022

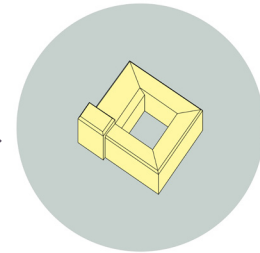
## DECREASE THE PRIVATE/PUBLIC BOUNDARIES

## MAKE THE BUILDING VISIBLE

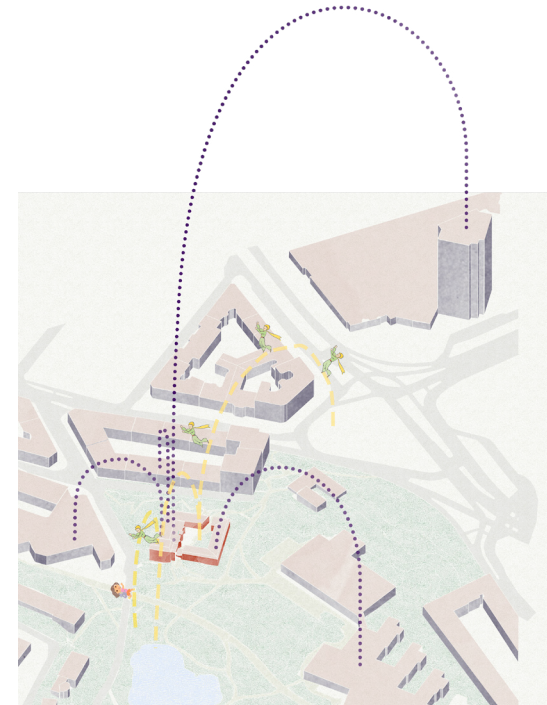
INVISIBLE



VISIBLE



Hamon, 2022



Hamon, 2022

## CONNECTION THROUGH THE BUILDING



# DESIGN BRIEF

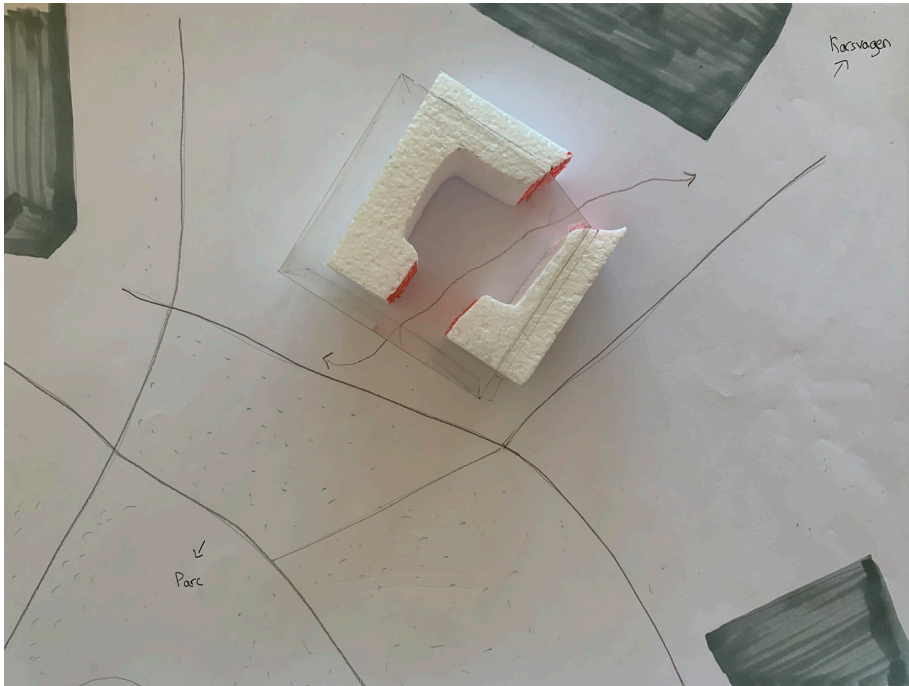
- **Urban intervention from the park to Korsvägen**
- **Few interventions inside**
- **A mix of uses and users**
- **Technical experimentations**



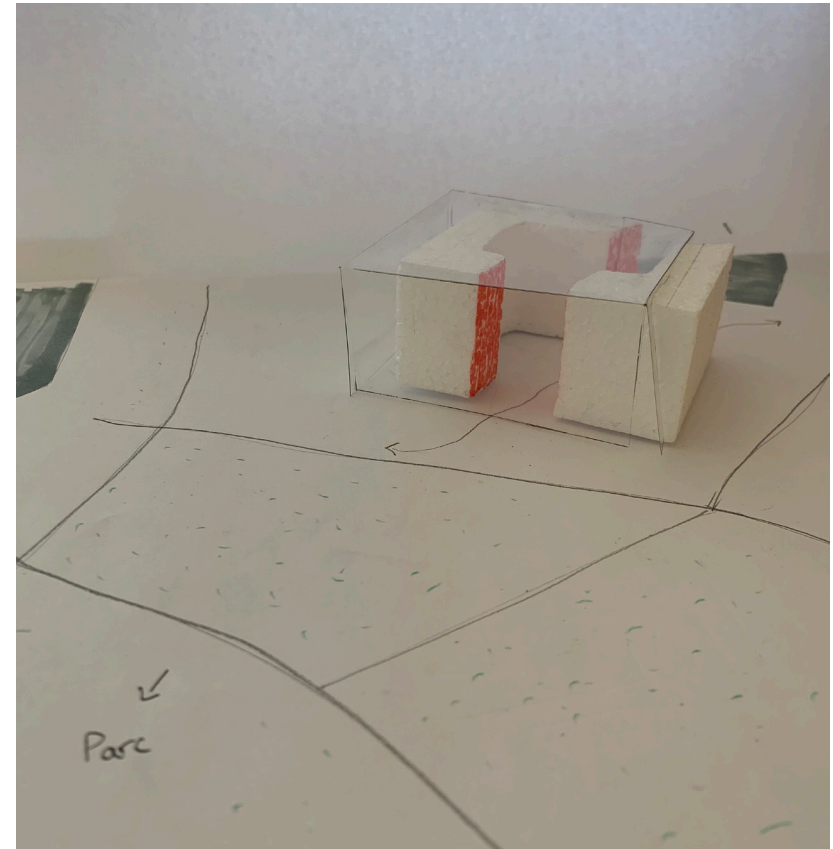
# TRANSFORMATION APPROACH

- Open the building to:

- create a direct connection (visually and physically) between Korsvägen and the parc
- make the building visible again from outside
- open the building to the surroundings
- provoke the protected building's statut of the courthouse.



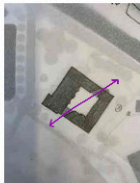
FIRST CONCEPTUAL MODEL



# TRANSFORMATION APPROACH

## Propositions for the cut: sun analysis

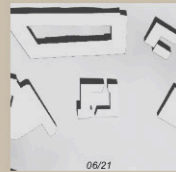
Proposal 1



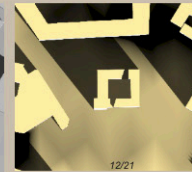
### view

- Centred on the courtyard, more private

### sun



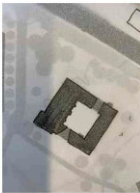
- good sunlight



### building

- keep the staircases as they are

Proposal 2



### view

- Shows the new facade
- clear entrance from the park
- invitation to enter

### sun



### building

- in the south, remaining space close the staircase

Proposal 3



### view

- view through the building
- open on the courtyard, maybe more a way instead of a courtyard

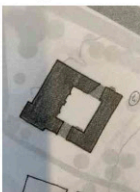
### sun



### building

- in the south, remaining space close the staircase

Proposal 4



### view

- view through the building
- open on the courtyard, maybe more a way instead of a courtyard

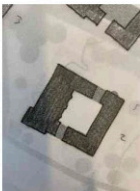
### sun



### building

- keep the staircases as they are

Proposal 5



### view

- view through the building not easy

### sun

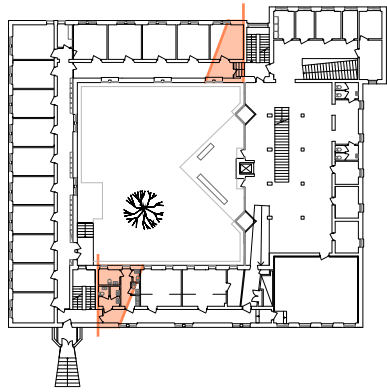


### building

- keep the staircases as they are

# TRANSFORMATION APPROACH

## Propositions for the cut

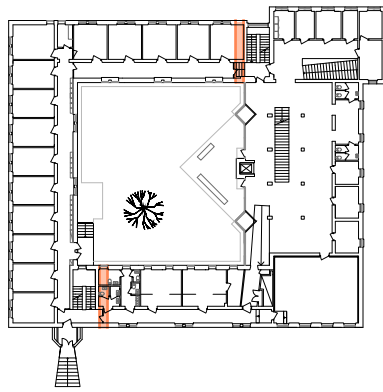


1

+ Keep the staircases as they are

+ Diagonal view

- Limited view due to the external walls

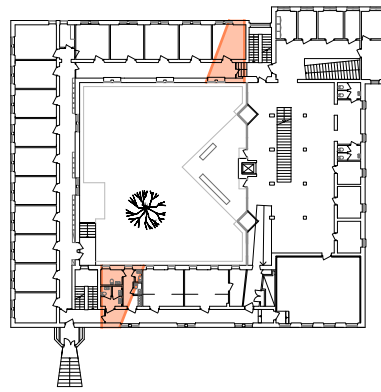


2

+ Small intervention

- No diagonal view

- Impossibility to use it as a passage

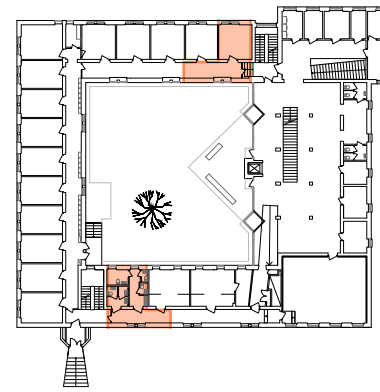


3

+ Keep the staircases as they are

+ Diagonal view

- Small angles in the building difficult to use

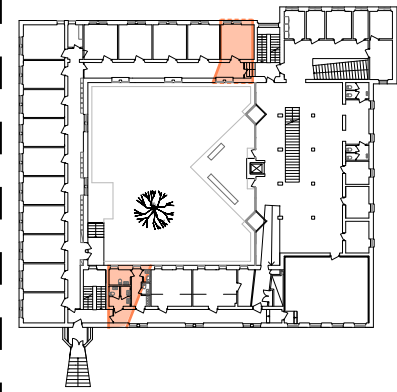


4

+ Keep the staircases as they are

+ No diagonal walls, easier to treat

- Creation of corners



5

+ Keep the staircases as they are

+ Diagonal view

+ Creation of a tension between the two parts

= Limitation of small angles

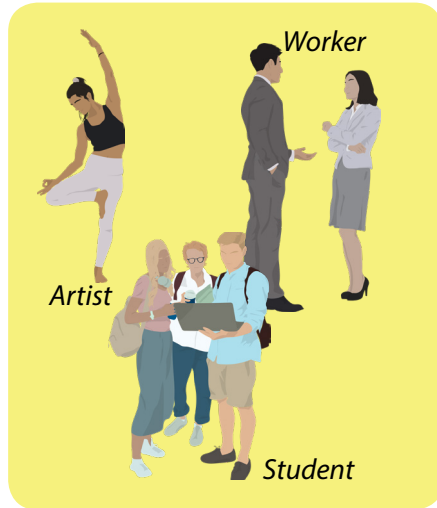


# TRANSFORMATION APPROACH

## Mix of users

Week

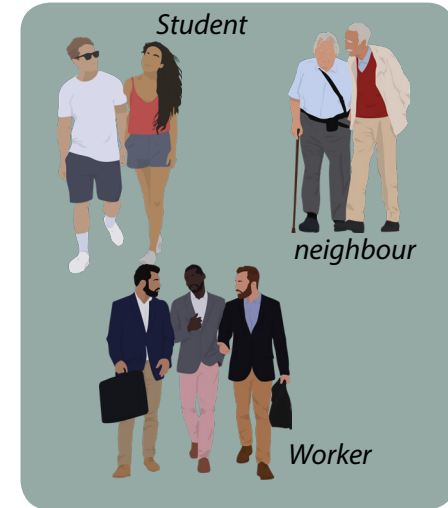
Morning



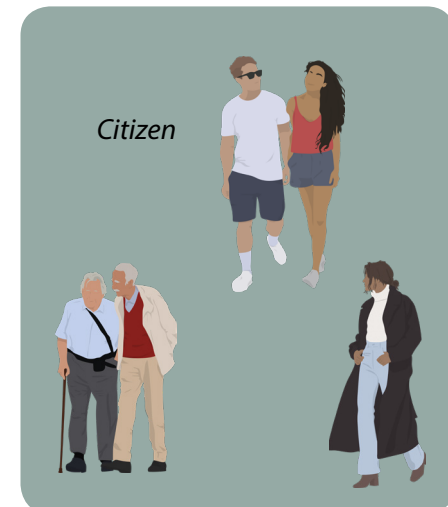
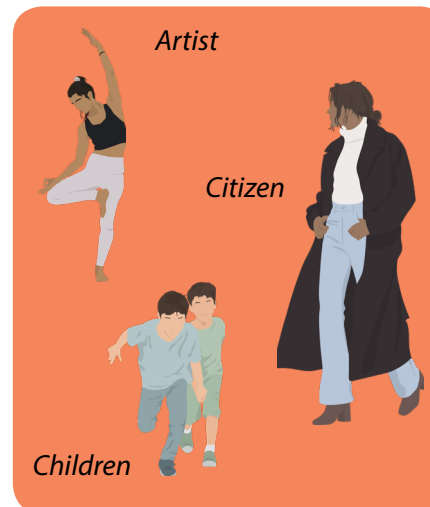
Afternoon



Evening



Week-end



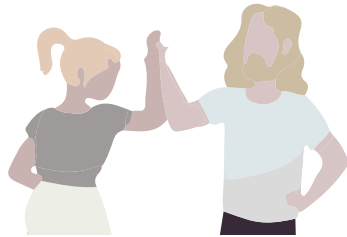
# TRANSFORMATION APPROACH

## A teaching system on site



**Engage voluntary people that are in need for change an apprenticeship**

**Purpose:** Form young people in order to give them a solid professional foundation



**Supported by professionals and participants along their path**

The workers are formed and guided by professionals from the field they have chosen



**Cooking**



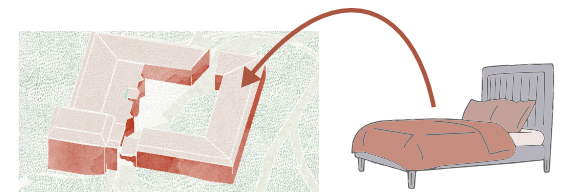
**Waiter**



**Farming**



**Handwork**

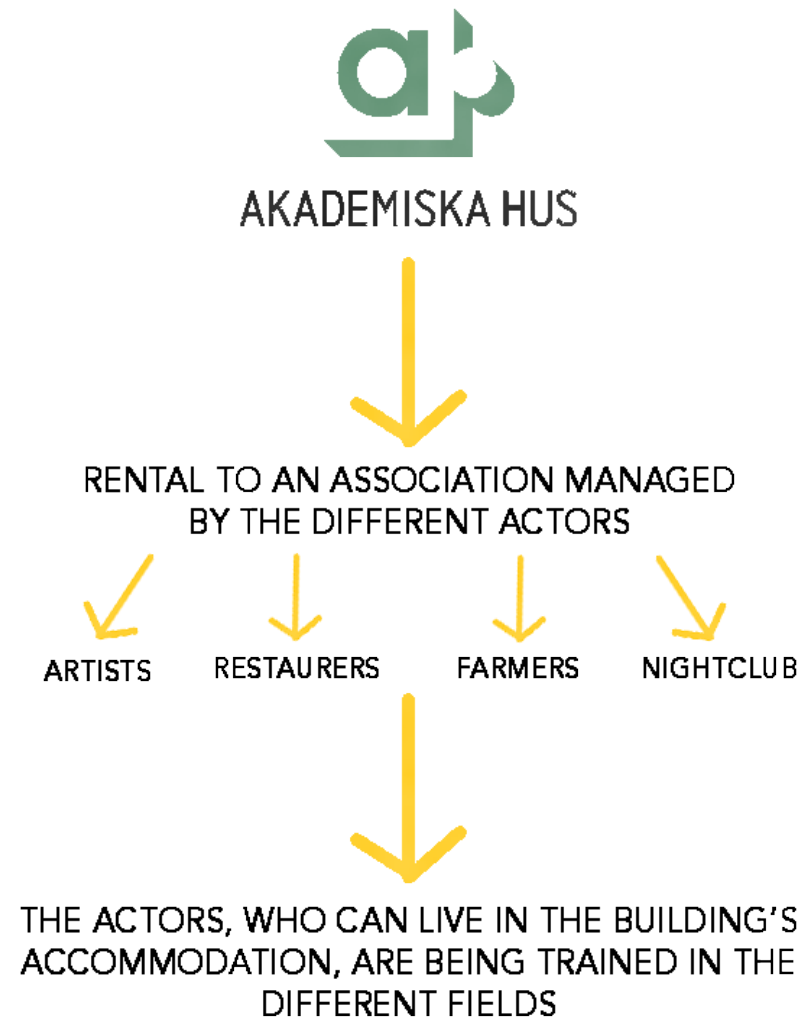


**Housing in situ**

Lower cost rent + salary

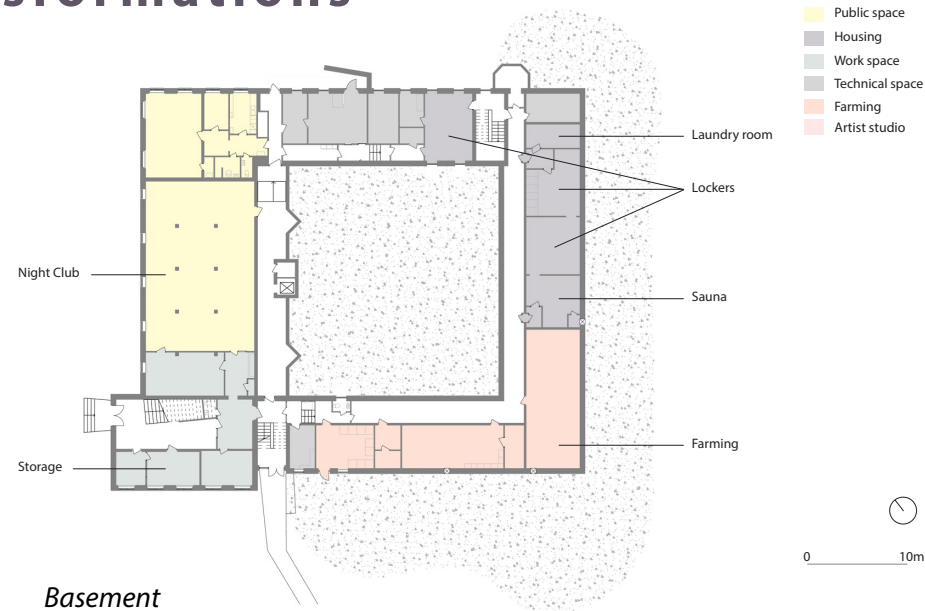
# TRANSFORMATION APPROACH

## A building managed by an association

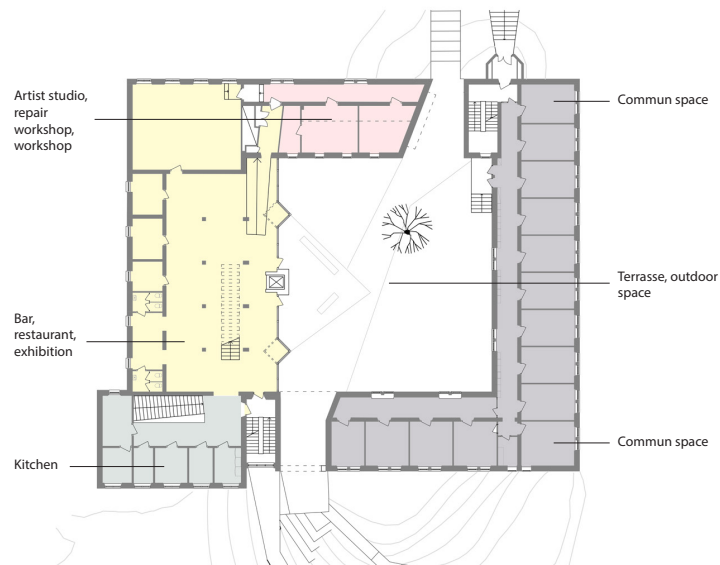


# TRANSFORMATION APPROACH

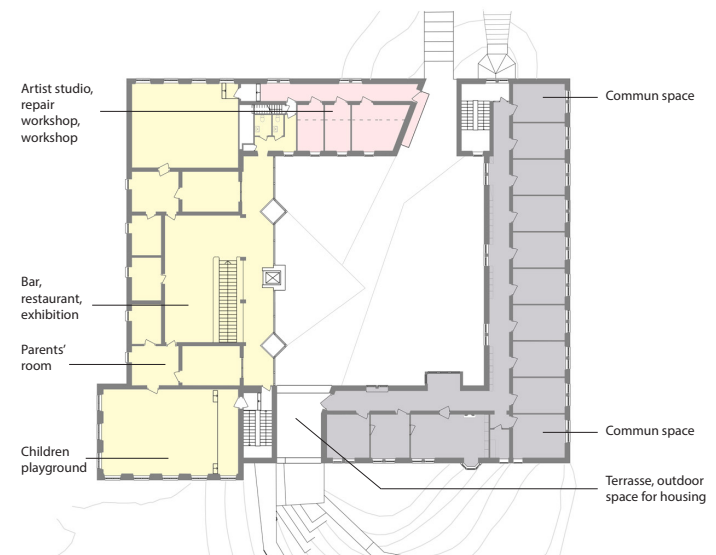
## Few indoor transformations



*Basement*



*Ground floor*

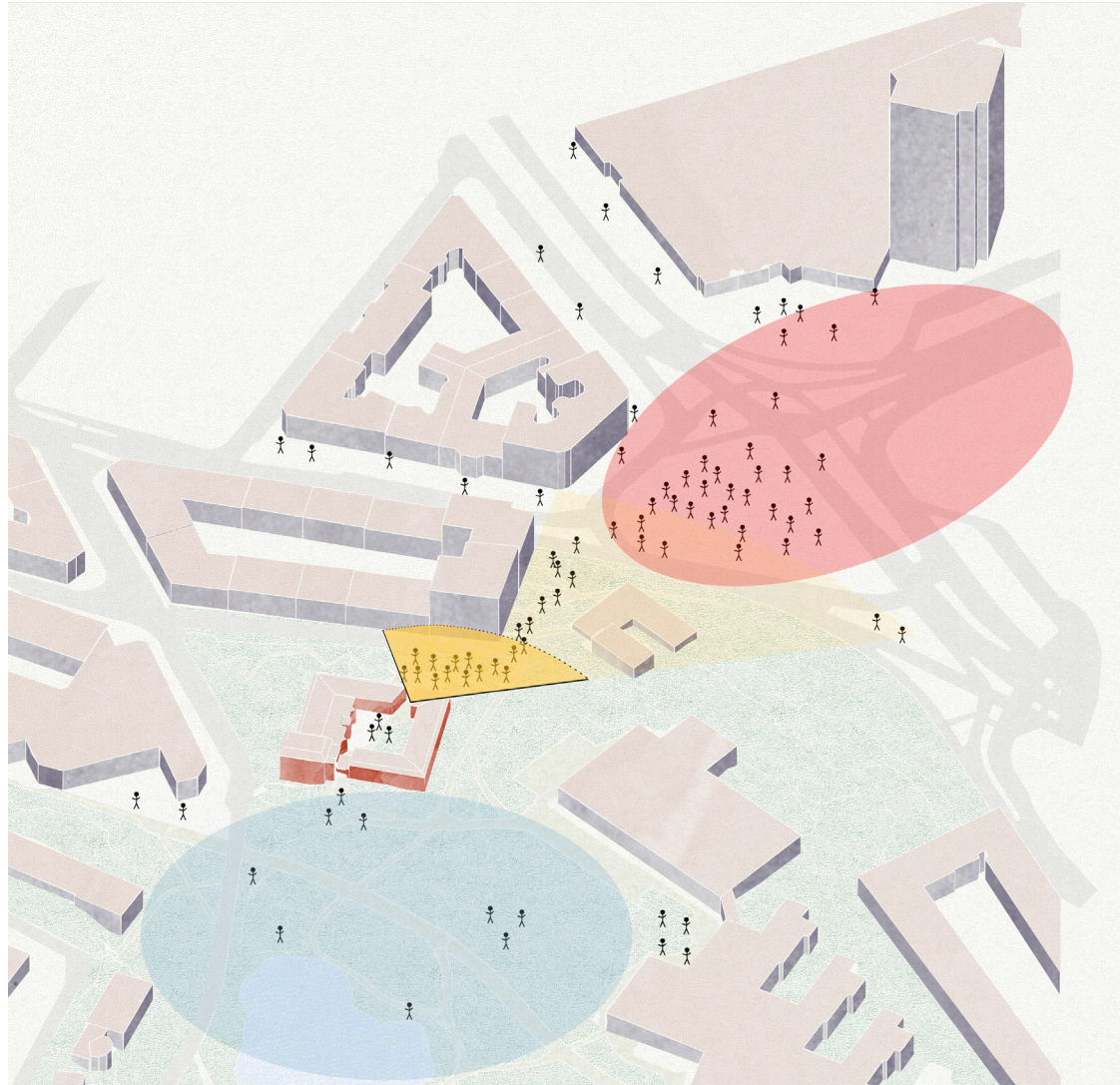


*First floor*



# TRANSFORMATION APPROACH

**An opening adapted to its context to make the building visible again and keep the courtyard**





# INTERVENTION DESIGN

## Ground treatment from Renströmsparken to korsvägen



**Master plan**

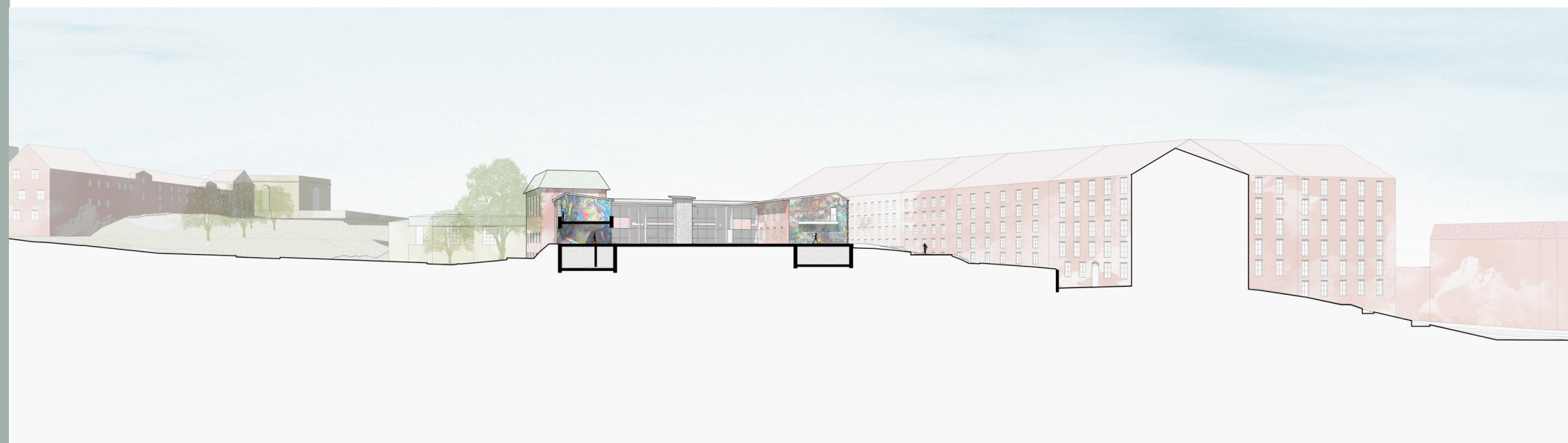
0

100m

Hamon, 2022

# INTERVENTION DESIGN

**Slope treatment to integrate the building into its surroundings**



Barbotin, 2022

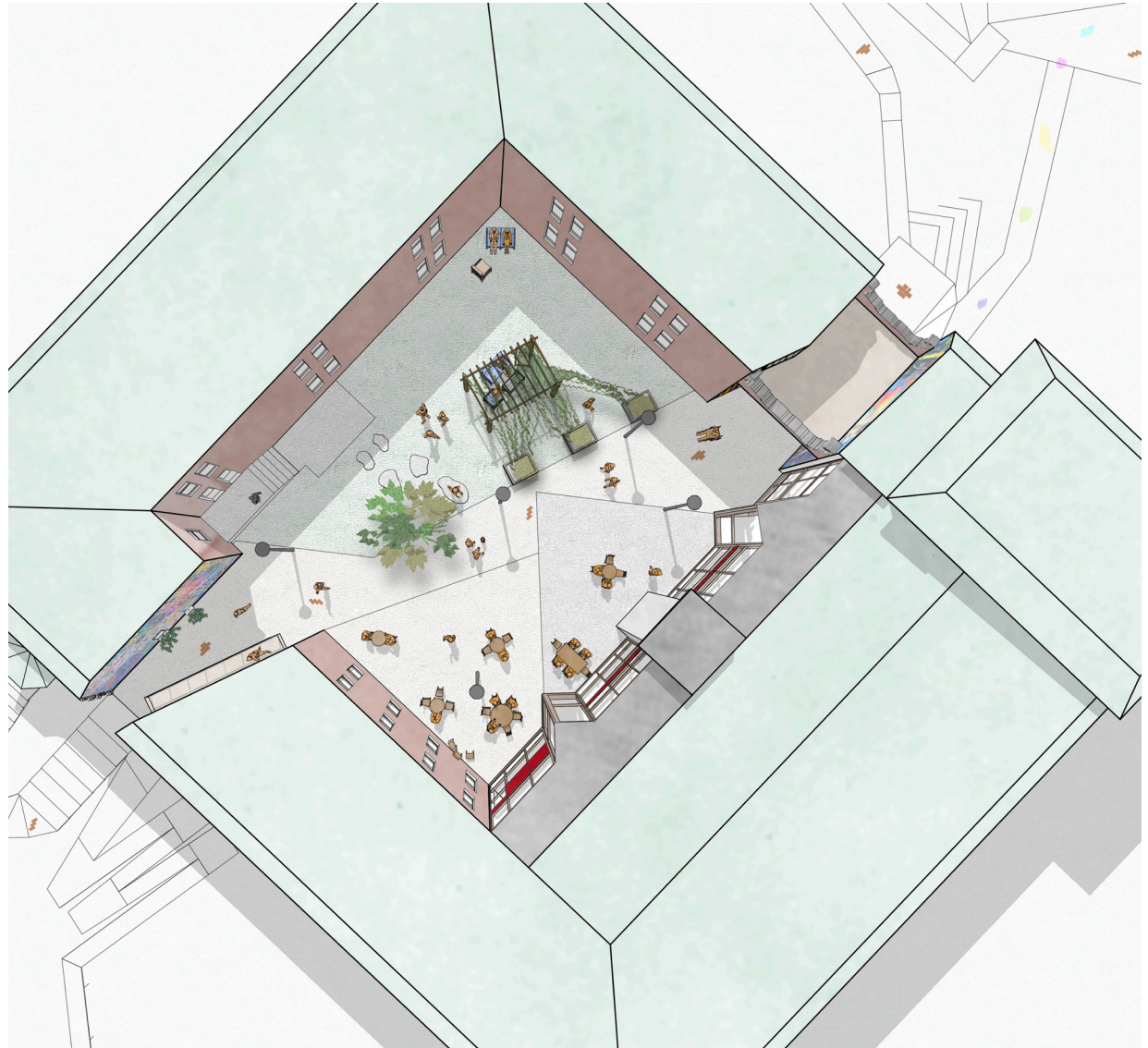
***Landscape section***

0 50m



# INTERVENTION DESIGN

**Creation of a public square into the building**



**Top perspective**



# INTERVENTION DESIGN

**A bigger opening on the side of korsvägen to guide pedestrians**



***Northern perspective***



# INTERVENTION DESIGN

**Visual link between each part of the building**



**Opening perspective**



# INTERVENTION DESIGN

Entrance through a cave which creates tension and invites to go in



Barbotin, 2022

*Southern perspective*

# INTERVENTION DESIGN

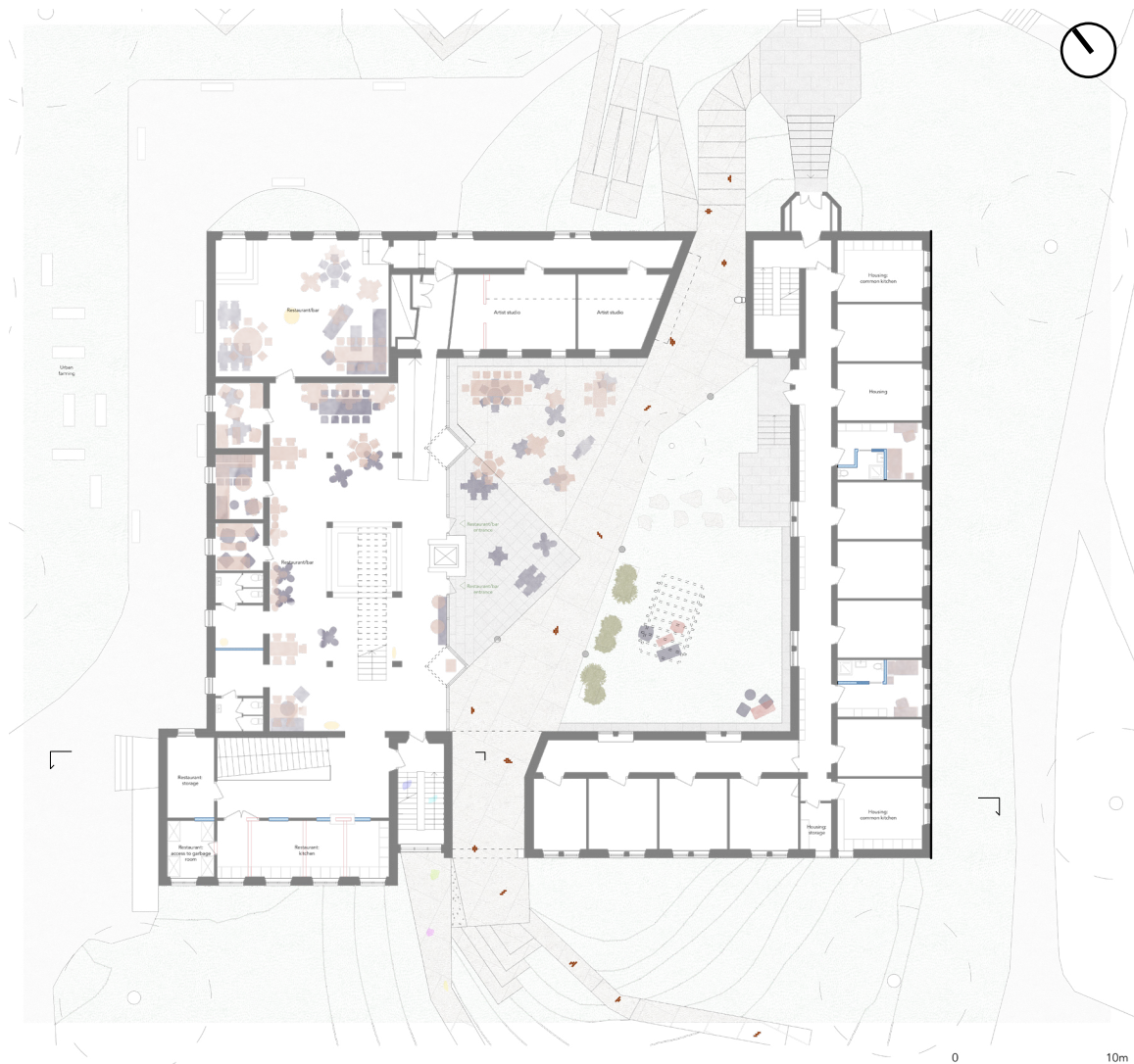
## A multi-functionnal basement





# INTERVENTION DESIGN

A mix between public, semi-public and private spaces



**Ground floor plan**

Hamon, 2022

# INTERVENTION DESIGN

## Different types of layout



# INTERVENTION DESIGN

## A mix of users



### Workers

Around 5000 workers that are less than 10 minutes walk from the site. Can enjoy the restaurant/bar.

### Children

3 schools close to the site. A popular outdoor playground. Can enjoy the indoor playground.



### Inhabitants

22 studios. The inhabitants are working and learning on site. They can also enjoy the restaurant/bar.

### Tourists

Around 6 000 000 tourists per year. Can enjoy the exhibitions, the restaurant/bar.



### Students

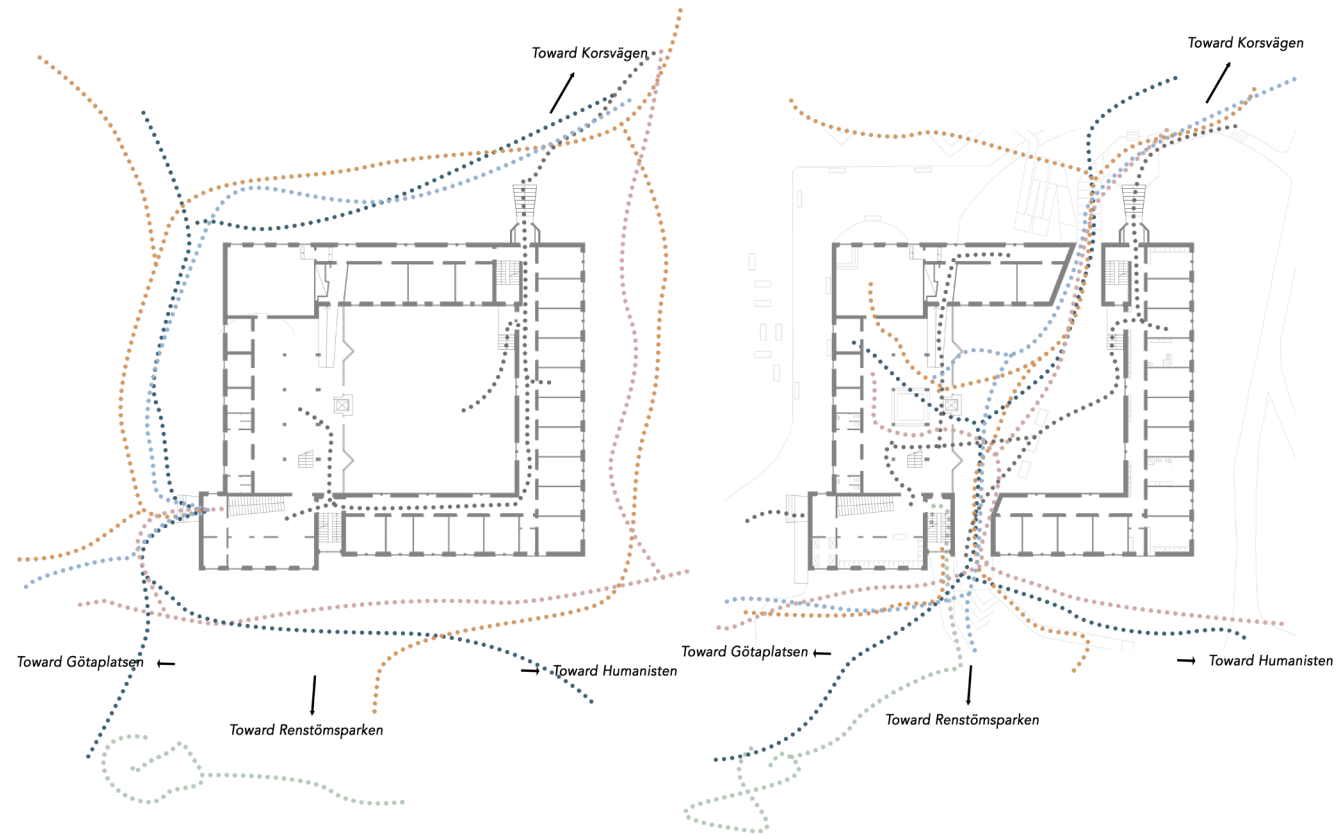
Around 1 000 students at Humanisten. They can enjoy the restaurant/bar, the nightclub and some workshops.

### Neighbours

Around 8000 inhabitants that are less than 10min of walk from the site. The medium age is 36 yo and the ratio woman/man is around 50/50. They can enjoy the restaurant/bar, the workshops, exhibitions, and the nightclub.



## Evolution of the circulation thanks to the intervention





# INTERVENTION DESIGN

## Modular public spaces based on reused materials



**Modular space perspective**



# INTERVENTION DESIGN

## Individual housing



Barbotin, 2022

***Housing perspective***

# INTERVENTION DESIGN

## Creation of a promenade leading to the opening



***Northern facade***

0 5m

# INTERVENTION DESIGN

**Different accesses depending on the use**



***Southern facade***

0 5m



# INTERVENTION DESIGN

## Use of the opening as an in-between space

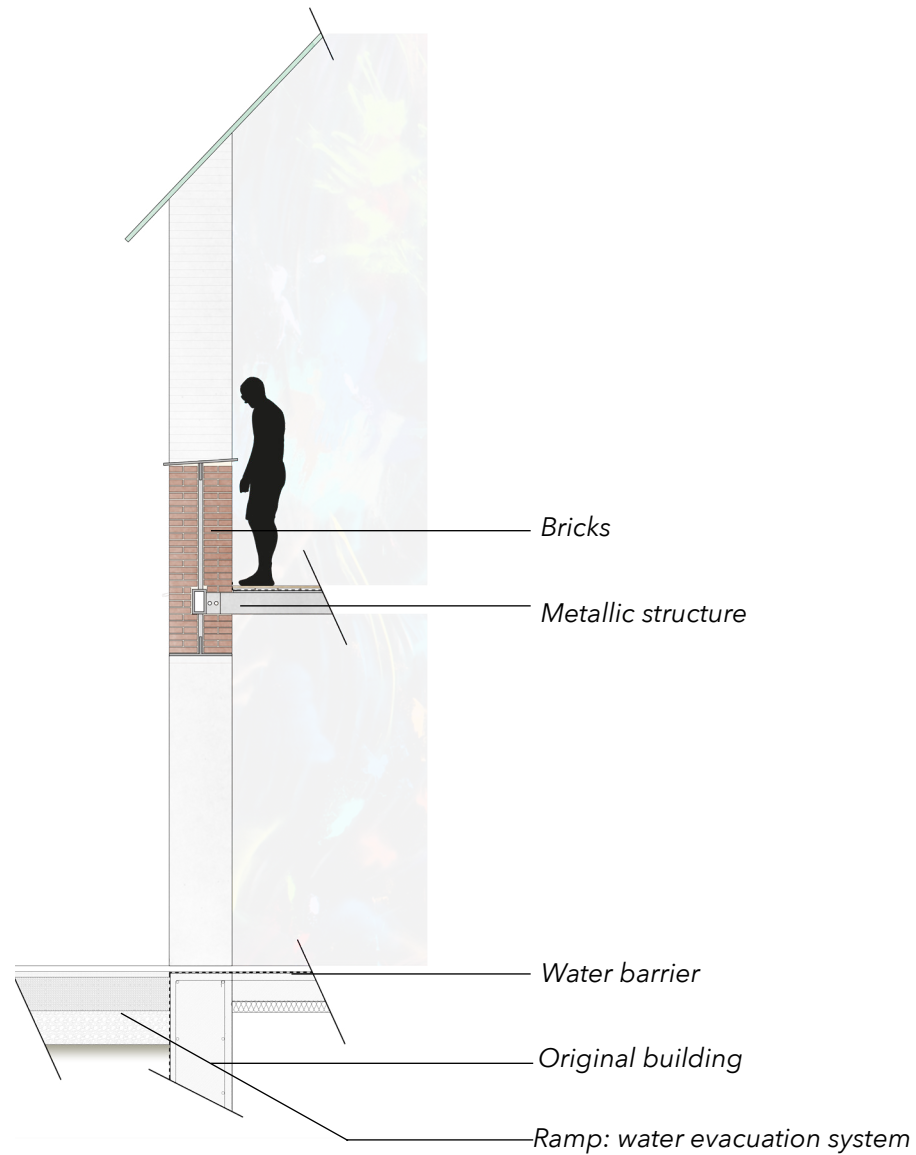
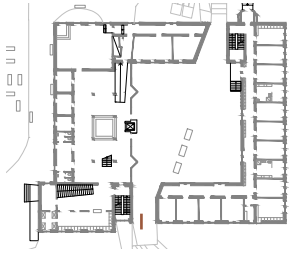


0 5m

**Section**



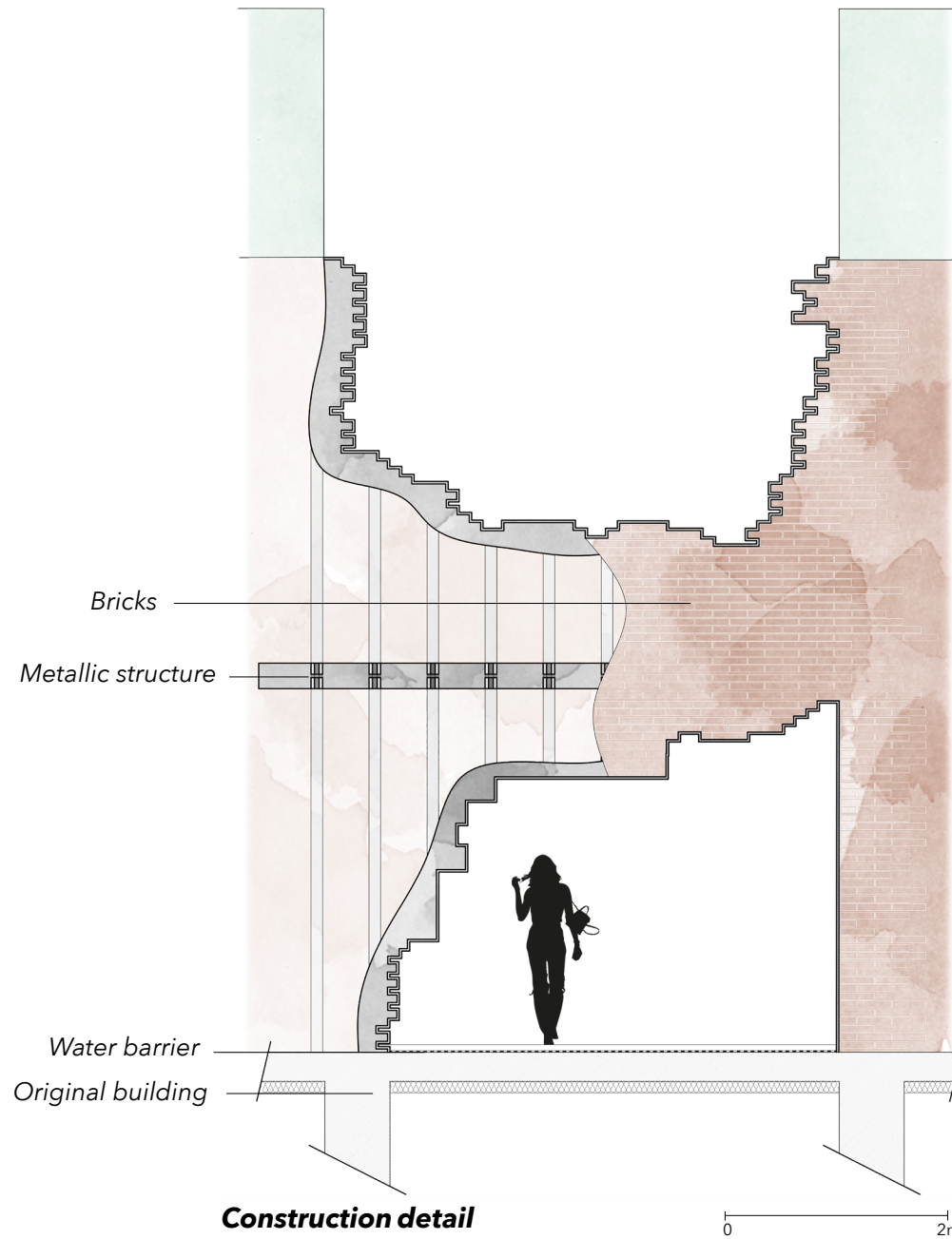
# INTERVENTION DESIGN



0 2m

**Construction detail**

# INTERVENTION DESIGN



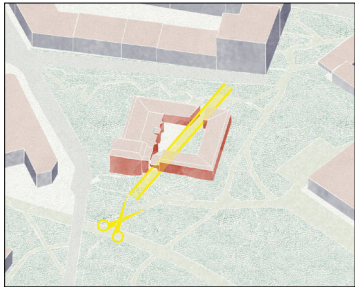
# INTERVENTION DESIGN

## Construction process

1

### CONTEXT ANALYSIS

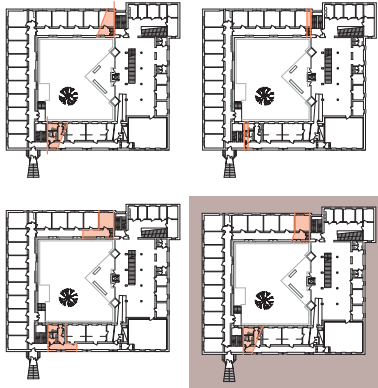
**Conclusion:** Create an opening through the building



2

### OPENING PROPOSITIONS

Research

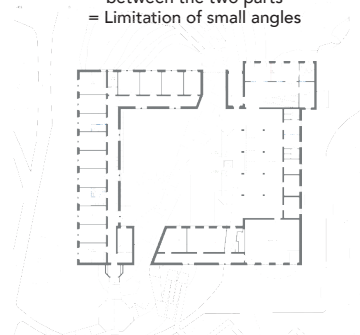


3

### CUT PROPOSITIONS

**Conclusion:**  
Proposition 4

- + Keep the staircases as they are
- + Diagonal view
- + Creation of a tension between the two parts
- = Limitation of small angles

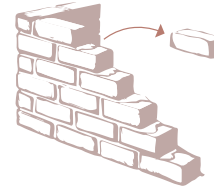


4

### CONSTRUCTION PROCESS

**A long and a meticulous job**

The bricks from the opening are removed carefully, one by one, in order to reuse them.



5

### REUSED MATERIALS

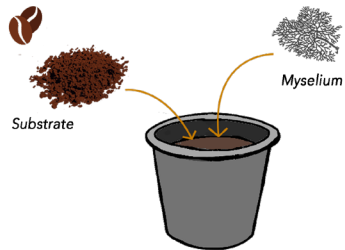
The bricks of the facades are used as a support for the new ramp





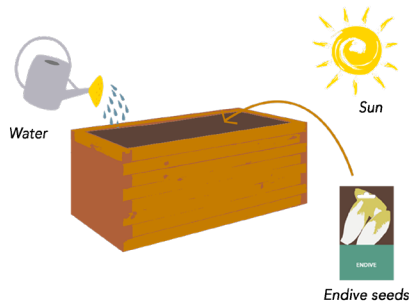
# INTERVENTION DESIGN

## Food production on site



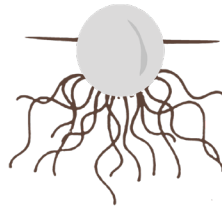
### Mushrooms preparation

Substrate (straw, sawdust, coffee grounds) and mycelium are mixed in a pot.



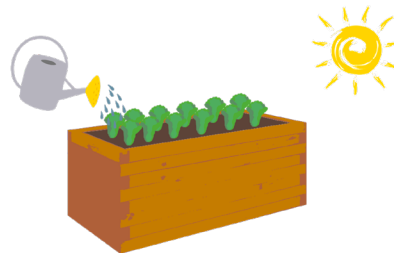
### Endives preparation

In spring, planting endive seeds outside.



### Mushrooms spawning

In a dark room the mushrooms spawn during 10 to 20 days. The temperature has to be between 20 and 25 degrees.



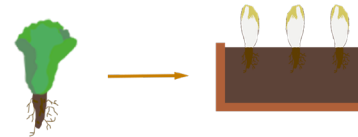
### Endives' leaves growth

With sun and water the endives' leaves grow outside until november.



### Mushrooms pinning

During 3 weeks the mushrooms are growing in a room between 15 and 30 degrees with 10 to 12 hours of light. After, they are harvested for consumption.



### Endives growth

In November the endives are harvested for the first time, their leaves are cut off and then they are replanted in a dark room, between 15 and 20 degrees, to allow the endive to grow.



### Circular economy

The vegetables produced on site are used in the restaurant. The production is almost continuous throughout the year.

# REFERENCES

- Janotto Andréas. (2021). Le Guide de culture des champignons pour débutant.
- Gerbeaud Xavier. (2018). Culture de l'endive.
- Göteborgs stad. (2022). Entire website.